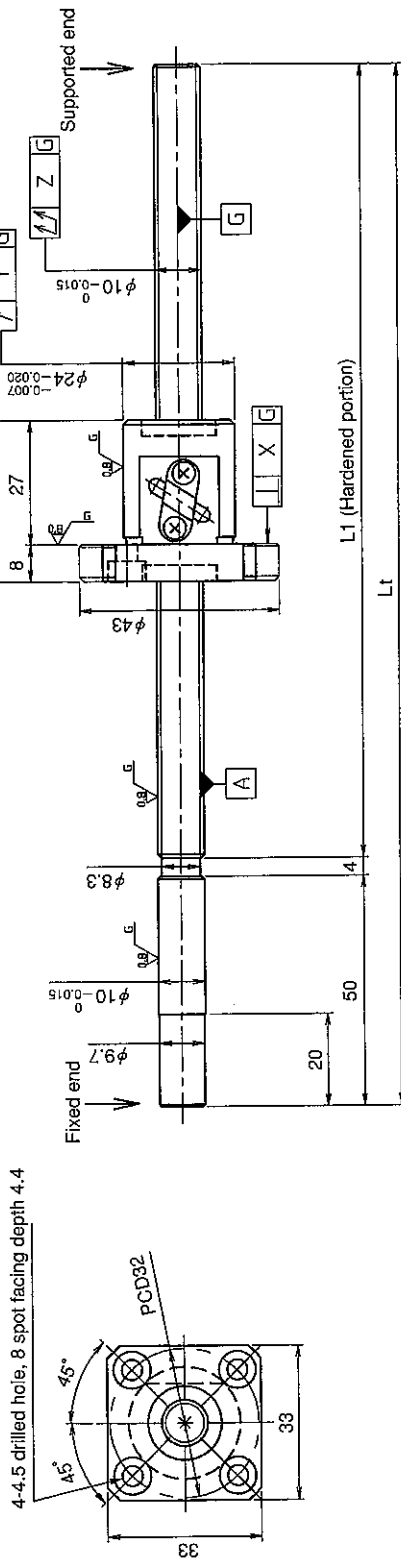


# UNFINISHED SHAFT ENDS

# Screw shaft diameter $\phi 10$ , Lead 2.5

(Unit : mm)



| Model No.            | Axial clearance | L <sub>1</sub> | L <sub>1</sub> | X     | Y     | Z     | Preload torque (N·cm) |    | Lead accuracy |    | Wiper      | Mass (kg) |
|----------------------|-----------------|----------------|----------------|-------|-------|-------|-----------------------|----|---------------|----|------------|-----------|
|                      |                 |                |                |       |       |       | ±Ec                   | ec | ±Ec           | ec |            |           |
| GE102FDS-AAFR-0250A  | ~0.030 (M)      | 196            | 250            | 0.014 | 0.020 | 0.080 | -                     |    | -             |    | Felt wiper | 0.41      |
| GE102FDS-AAFR-0320A  |                 | 266            | 320            |       |       | 0.100 | -                     |    | -             |    |            | 0.50      |
| *GG102FDS-AAFR-0250A | ~0.005 (F)      | 196            | 250            | 0.010 | 0.012 | 0.055 | ~0.5                  |    | 0.018         |    |            | 0.41      |
| *GG102FDS-AAFR-0320A |                 | 266            | 320            |       |       | 0.065 |                       |    | 0.018         |    |            | 0.50      |

- JIS B 1192-1987 (GG series) applies to accuracy standard values shown in the above-mentioned table.
- Support unit : BUK-8A (BUK-8F, BUK-6S) and BUM-8 is recommended. (Refer to P.398)
- Product with axial clearance ~0.005 (F) shown in the table may be partially preloaded.
- Preload torque shown in the table is a value before greasing.
- The grease is contained inside of nut only at the time of delivery. When using it, apply lubricant.
- For asterisked \* model with unworked shaft ends equivalent to lead accuracy grade C3, contact KURODA.

### Table of optional specifications for each model

| Series | Additional machining of shaft end | Axial clearance adjustment (Note 2) | Surface treatment (Note 1) | Difference of grease | Direction of nut | Wiper removal |
|--------|-----------------------------------|-------------------------------------|----------------------------|----------------------|------------------|---------------|
| GE     | ○                                 | X                                   | ○                          | ○                    | ○                | ○             |
| GG     | ○                                 | ○                                   | ○                          | ○                    | ○                | ○             |

(Note 1) The above-mentioned surface treatment is LD treatment (coating thickness : 1 to 2  $\mu\text{m}$ ). As coating may be peeled off by wiper in case of LD treatment, remove wiper.  
 (Note 2) For axial clearance adjustment for GG series, contact KURODA.

### Ball screw specifications

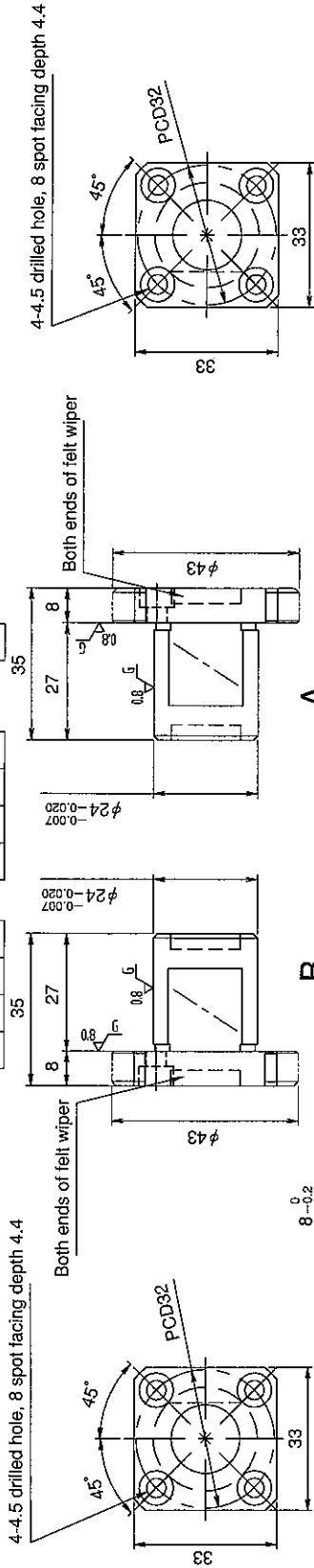
|                    |                  |                           |                     |            |
|--------------------|------------------|---------------------------|---------------------|------------|
| Screw shaft dia.   | 10               | Axial clearance           | ~0.030 (M)          | ~0.005 (F) |
| Lead               | 2.5              | Basic dynamic load rating | 2700N               |            |
| Thread direction   | Right-hand       | Basic static load rating  | 4200N               |            |
| Number of circuits | 2.5turn 1circuit | Spacer ball               |                     |            |
| Ball diameter      | 2.000            | Lubricant                 | Alvania Grease No.2 |            |

**SHAFT END FINISH ORDERING SHEET**

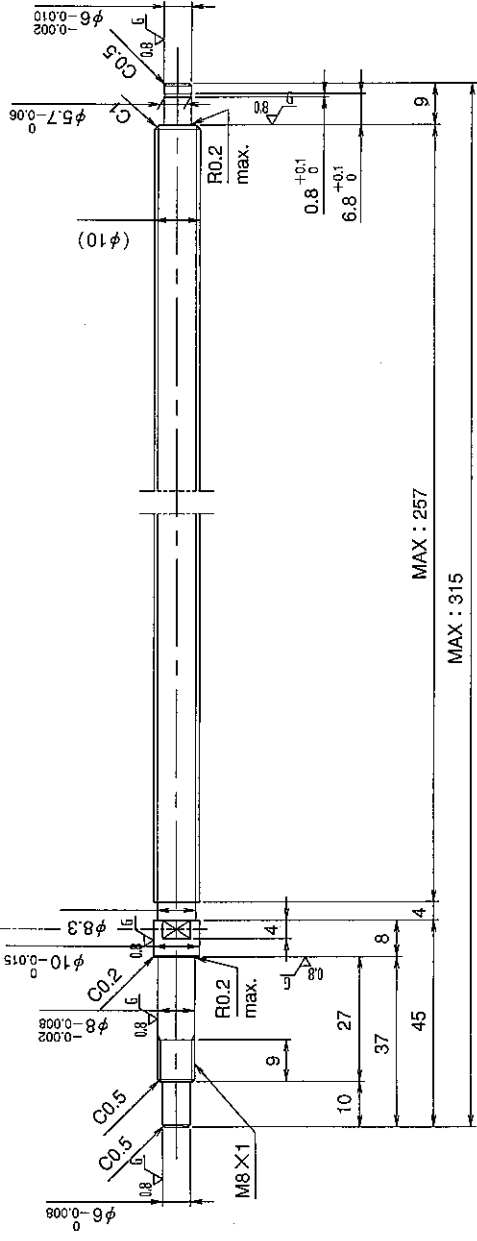
**Screw shaft diameter  $\phi 10$ , Lead 2.5**

(Unit : mm)

GE102FDS-AAFR-     X     -C7M  
 GG102FDS-AAFR-     X     -C5



Select the orientation of nut flange by circling A or B.  
 No marking means "B" orientation as default.



Applicable Support Unit  
 Direct mount : BUK-8A (Fixed end unit+Supported end unit) Refer to Page.403  
 Circle flange : BUM-8 (Fixed end unit+Supported end bearing) Refer to Page.410

|                 |                          |
|-----------------|--------------------------|
| Company Name    |                          |
| Telephone       | Name of Person in Charge |
| Company Address |                          |