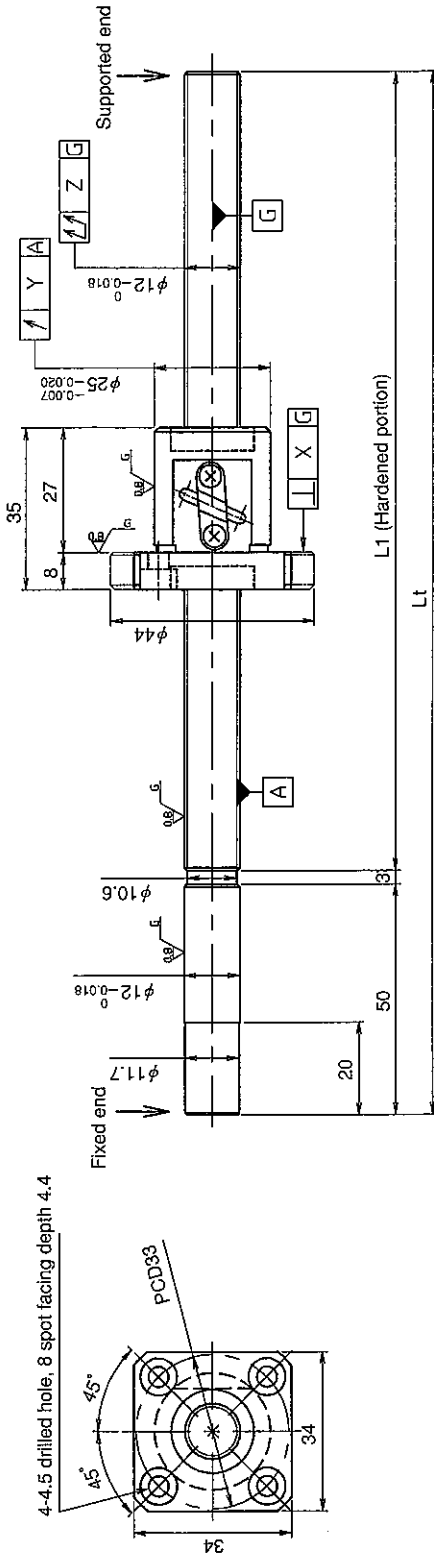


UNFINISHED SHAFT ENDS

Screw shaft diameter ϕ 12, Lead 2

(Unit : mm)



Model No.	Axial clearance	L ₁	L _t	X	Y	Z	Preload torque (N·cm)		Lead accuracy		Wiper	Mass (kg)
							$\pm Ec$	ec	$\pm Ec$	ec		
GE1202DS-AAPR-0300A	~ 0.030 (M)	247	300	0.014	0.020	0.080	—		—		Plastics wiper	0.52
GE1202DS-AAPR-0455A	~ 0.005 (F)	402	455	0.010	0.012	0.012	~ 1.0		0.018			0.60
*GG1202DS-AAPR-0300A	~ 0.005 (F)	247	300	0.010	0.012	0.055	~ 1.0		0.027		Plastics wiper	0.52
*GG1202DS-AAPR-0455A	~ 0.005 (F)	402	455	0.010	0.012	0.080	~ 1.0		0.020			0.60

• JIS B 1192-1987 (GG series) applies to accuracy standard values shown in the above-mentioned table.

• Support unit : BUK-8A (BUK-8F, BUK-6S) and BUM-8 is recommended. (Refer to P.398)

• Product with axial clearance ~ 0.005 (F) shown in the table may be partially preloaded.

• Preload torque shown in the table is a value before greasing.

• The grease is contained inside of nut only at the time of delivery. When using it, apply lubricant.

• For asterisked * model with unworked shaft ends equivalent to lead accuracy grade C3, contact KURODA.

Table of optional specifications for each model

Series	Additional machining of shaft end	Axial clearance adjustment (Note 2)	Surface treatment (Note 1)	Wiper removal
GE	○	X	○	○
GG	○	○	○	○

(Note 1) The above-mentioned surface treatment is LD treatment (coating thickness : 1 to 2 μ m).

(Note 2) For axial clearance adjustment for GG series, contact KURODA.

Ball screw specifications

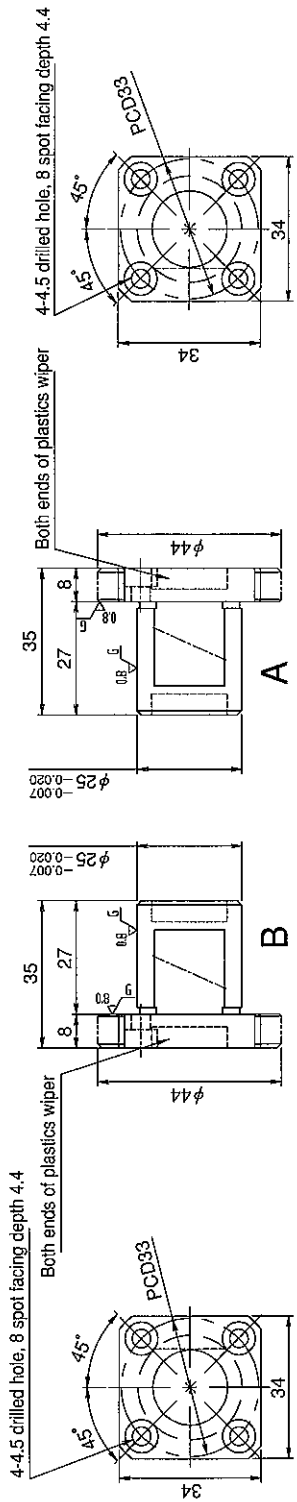
Screw shaft dia.	12	Axial clearance	~ 0.030 (M)	~ 0.005 (F)
Lead	2	Basic dynamic load rating	2450N	
Thread direction	Right-hand	Basic static load rating	4100N	
Number of circuits	2.5turn 1circuit	Spacer ball	—	
Ball diameter	1.5875	Lubricant	Alvania Grease No.2	

SHAFT END FINISH ORDERING SHEET

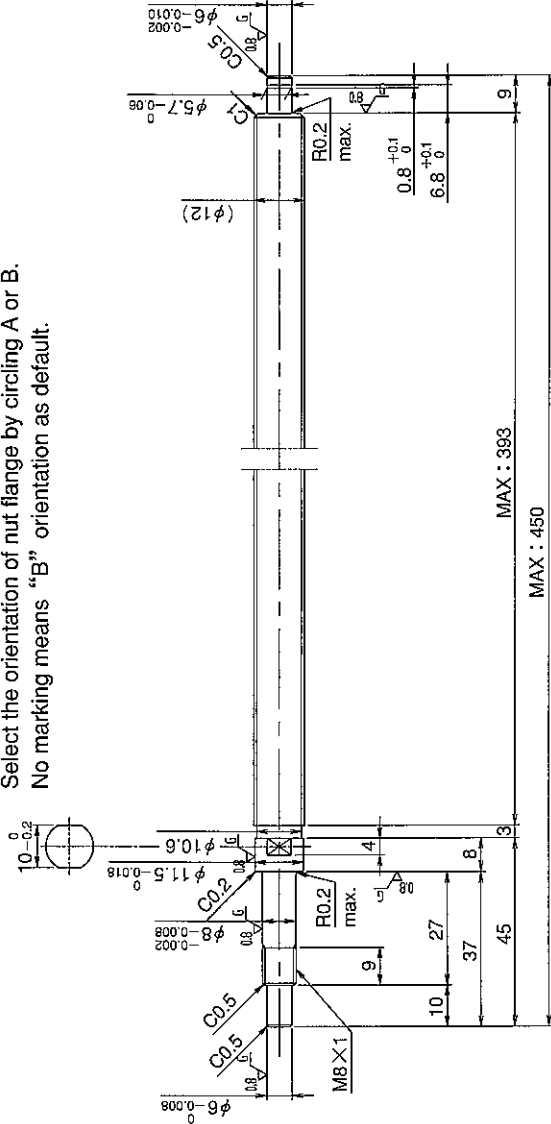
Screw shaft diameter ϕ 12, Lead 2

(Unit : mm)

GE1202DS-AAPR- X -C7M
 GG1202DS-AAPR- X -C5



Select the orientation of nut flange by circling A or B.
 No marking means "B" orientation as default.



Applicable Support Unit
 Direct mount : BUK-8A (Fixed end unit+Supported end unit) Refer to Page.403
 Circle flange : BUM-8 (Fixed end unit+Supported end bearing) Refer to Page.410

Company Name		
Telephone		Name of Person in Charge
Company Address		