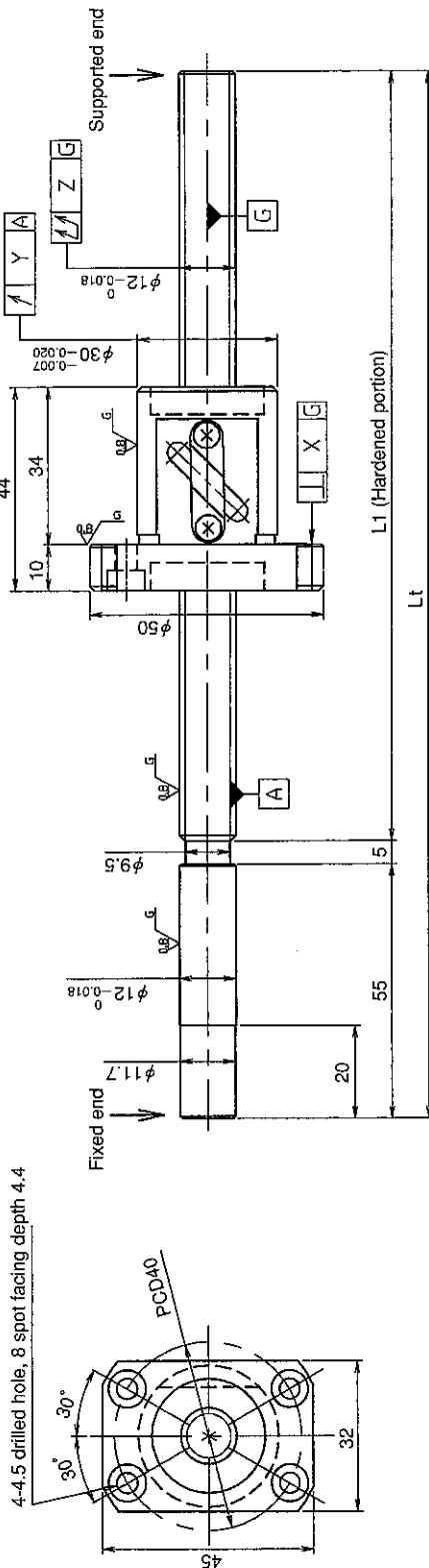


UNFINISHED SHAFT ENDS

Screw shaft diameter ϕ 12, Lead 5

(Unit : mm)



| Model No. | Axial clearance | L1 | L1 | X | Y | Z | Preload torque (N·cm) | | Lead accuracy | | Wiper | Mass (kg) |
|----------------------|-----------------|-----|-----|-------|-------|-------|-----------------------|----|---------------|-------|----------|-----------|
| | | | | | | | ±Ec | ec | ±Ec | ec | | |
| GE1205DS-BALR-0305A | ~0.030 (M) | 245 | 305 | 0.014 | 0.020 | 0.080 | - | - | - | - | - | 0.60 |
| GE1205DS-BALR-0455A | | 395 | 455 | 0.120 | | | | | | | | |
| *GG1205DS-BALR-0305A | ~0.005 (F) | 245 | 305 | 0.010 | 0.012 | 0.055 | ~1.0 | - | 0.023 | 0.018 | Lip seal | 0.60 |
| *GG1205DS-BALR-0455A | | 395 | 455 | 0.080 | | | | | | | | |

● JIS B 1192-1987 (GG series) applies to accuracy standard values shown in the above-mentioned table.

● Support unit : BUK-10A (BUK-10F, BUK-8S) and BUM-10 is recommended. (Refer to P.398)

● Product with axial clearance ~0.005 (F) shown in the table may be partially preloaded.

● Preload torque shown in the table is a value before greasing.

● The grease is contained inside of nut only at the time of delivery. When using it, apply lubricant.

● For asterisked * model with unworked shaft ends equivalent to lead accuracy grade C3, contact KURODA.

Table of optional specifications for each model

| Series | Additional machining of shaft end | Axial clearance adjustment (Note 2) | Surface treatment (Note 1) | Difference of grease | Direction of nut | Wiper removal |
|--------|-----------------------------------|-------------------------------------|----------------------------|----------------------|------------------|---------------|
| GE | ○ | X | ○ | ○ | ○ | ○ |
| GG | ○ | ○ | ○ | ○ | ○ | ○ |

(Note 1) The above-mentioned surface treatment is LD treatment (coating thickness : 1 to 2 μ m).

(Note 2) For axial clearance adjustment for GG series, contact KURODA.

Ball screw specifications

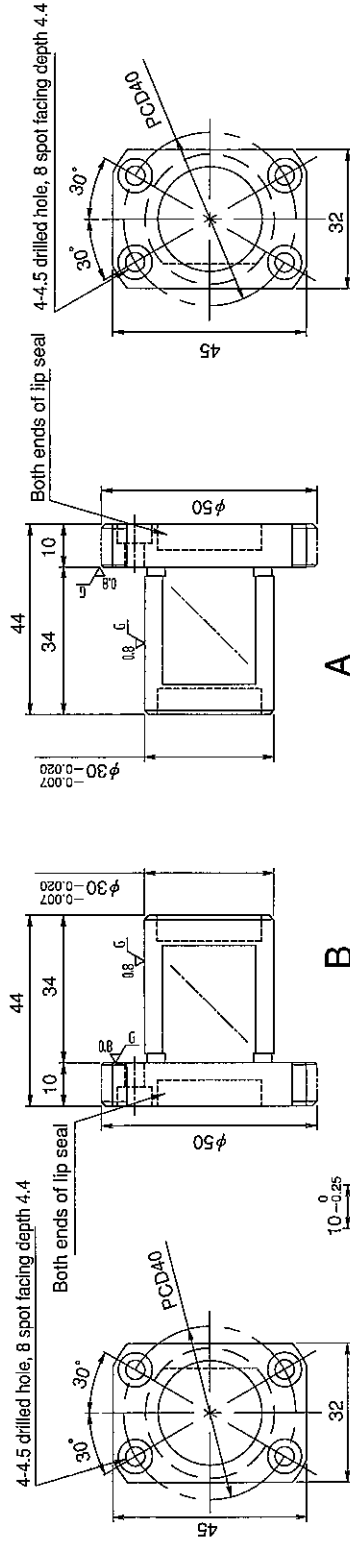
| | | | | |
|--------------------|------------------|---------------------------|---------------------|------------|
| Screw shaft dia. | 12 | Axial clearance | ~0.030 (M) | ~0.005 (F) |
| Lead | 5 | Basic dynamic load rating | 5950N | |
| Thread direction | Right-hand | Basic static load rating | 9800N | |
| Number of circuits | 2.5turn 1circuit | Spacer ball | — | |
| Ball diameter | 3.175 | Lubricant | Alvania Grease No.2 | |

SHAFT END FINISH ORDERING SHEET

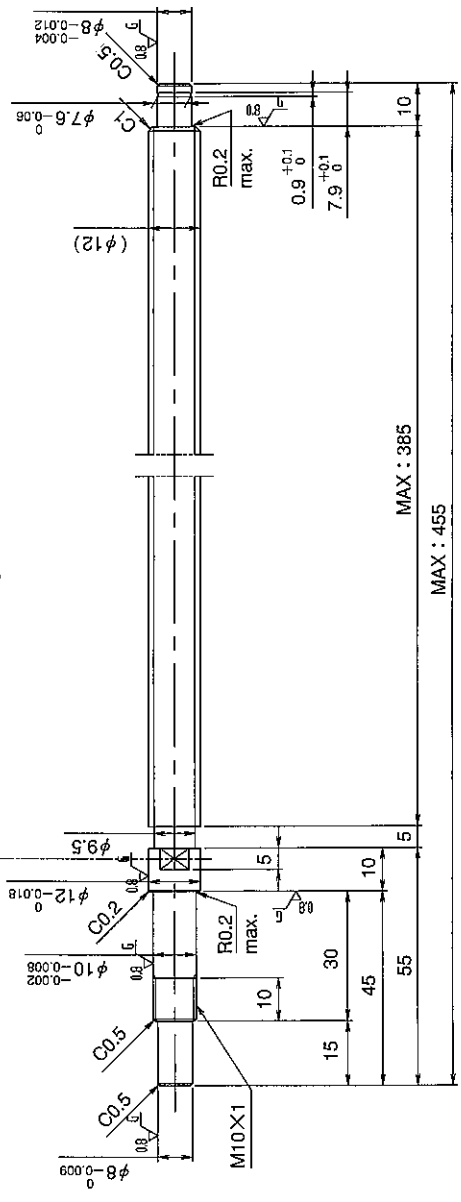
Screw shaft diameter ϕ 12, Lead 5

(Unit : mm)

GE1205DS-BALR- X -C7M
 GG1205DS-BALR- X -C5



Select the orientation of nut flange by circling A or B.
 No marking means "B" orientation as default.



Applicable Support Unit
 Direct mount : BUK-10A (Fixed end unit+Supported end unit) Refer to Page.404
 Circle flange : BUM-10 (Fixed end unit+Supported end bearing) Refer to Page.411

| | |
|-----------------|--------------------------|
| Company Name | |
| Telephone | Name of Person in Charge |
| Company Address | |