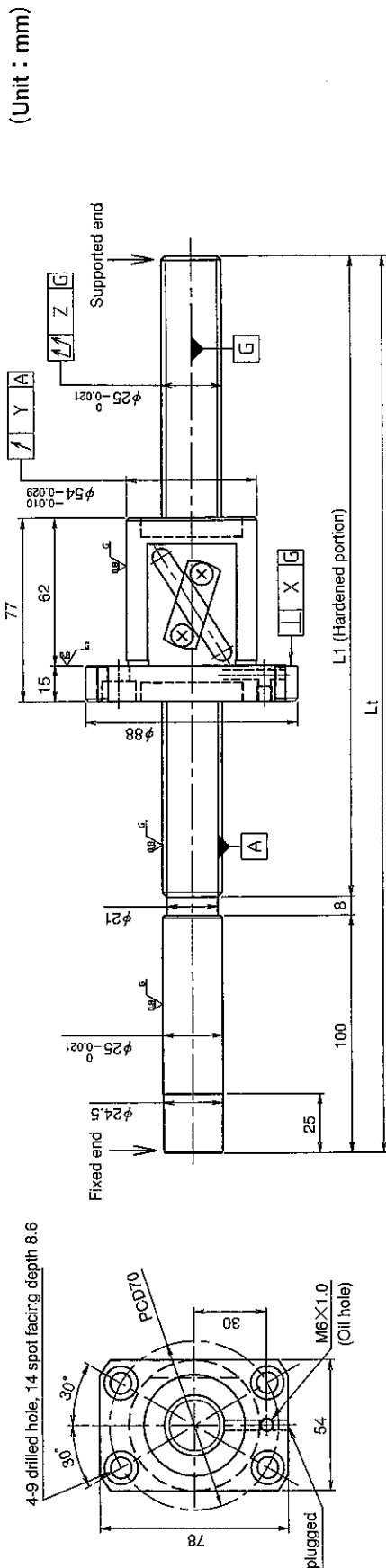


UNFINISHED SHAFT ENDS

Screw shaft diameter $\phi 25$, Lead 2.5



(Unit : mm)

Notation of standard ground ball screw

- Standard length shaft without end machining
- GE2525AS-BALR-□□□□□□□□□□
- GG2525AS-BALR-□□□□□□□□□□
- With end machining specified on your drawing
- GE2525AS-A□□R-□□□□□□□□□□-C7M
- GG2525AS-A□□R-□□□□□□□□□□-C5□

Overall length Thread length

● JIS B 1192-1987 (GG series) applies to accuracy standard values shown in the above-mentioned table.

● Support unit : BUK-20A (BUK-20F, BUK-20S) and BUM-20 is recommended. (Refer to P.398)

● Product with axial clearance ~0.005 (F) shown in the table may be partially preloaded.

● Preload torque shown in the table is a value before greasing.

● The grease is contained inside of nut only at the time of delivery. When using it, apply lubricant.

● For asterisked * model with unworked shaft ends equivalent to lead accuracy grade C3, contact KURODA.

Table of optional specifications for each model

| Series | Additional machining of shaft end | Axial clearance adjustment (Note 2) | Difference of grease | Direction of nut | Wiper removal |
|--------|-----------------------------------|-------------------------------------|----------------------|------------------|---------------|
| GE | ○ | X | ○ | ○ | ○ |
| GG | ○ | ○ | ○ | ○ | ○ |

(Note 1) The above-mentioned surface treatment is LD treatment (coating thickness : 1 to 2 μ m).

(Note 2) For axial clearance adjustment for GG series, contact KURODA.

| Model No. | Axial clearance | L ₁ | L _t | X | Y | Z | Preload torque (N·cm) | | Lead accuracy | | Wiper | Mass (kg) |
|----------------------|-----------------|----------------|----------------|-------|-------|-------|-----------------------|----|---------------|----|----------|-----------|
| | | | | | | | ±Ec | ec | ±Ec | ec | | |
| GE2525AS-BALR-1020A | ~0.030 (M) | 912 | 1020 | | | 0.150 | - | - | - | - | Lip seal | 5.30 |
| GE2525AS-BALR-1520A | | 1412 | 1520 | 0.018 | 0.030 | 0.190 | | | | | | 7.23 |
| GE2525AS-BALR-2020A | | 1912 | 2020 | | | 0.320 | | | | | | 9.16 |
| *GG2525AS-BALR-1020A | ~0.005 (F) | 912 | 1020 | | | 0.100 | ~4.0 | - | - | - | Lip seal | 5.30 |
| *GG2525AS-BALR-1520A | | 1412 | 1520 | 0.013 | 0.019 | 0.130 | | | | | | 7.23 |
| GG2525AS-BALR-2020A | | 1912 | 2020 | | | 0.170 | | | | | | 9.16 |

Ball screw specifications

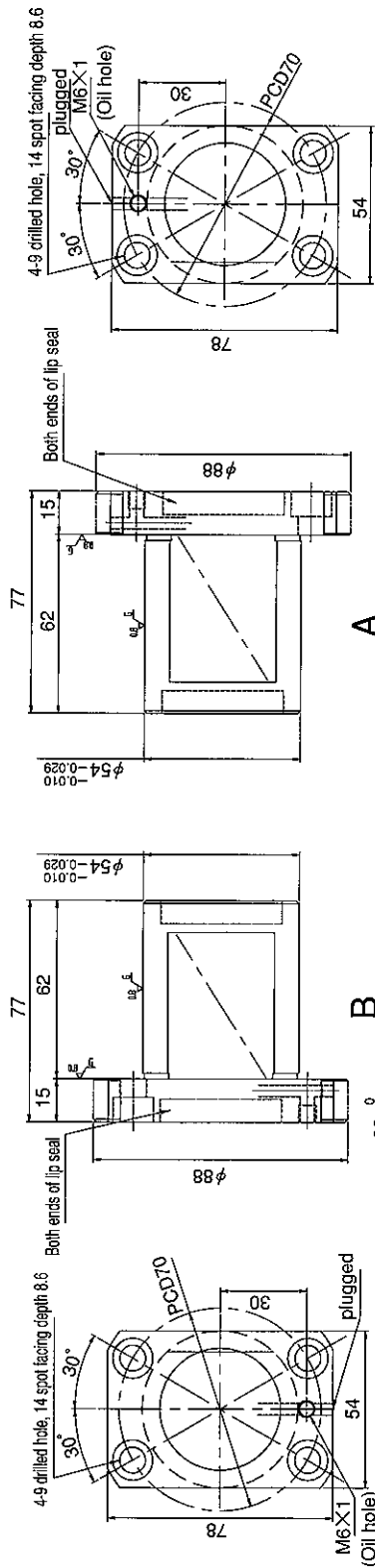
| | | | | |
|--------------------|------------------|---------------------------|---------------------|------------|
| Screw shaft dia. | 25 | Axial clearance | ~0.030 (M) | ~0.005 (F) |
| Lead | 2.5 | Basic dynamic load rating | 10400N | |
| Thread direction | Right-hand | Basic static load rating | 20100N | |
| Number of circuits | 1.5turn 1circuit | Spacer ball | - | |
| Ball diameter | 4.7625 | Lubricant | Alvania Grease No.2 | |

SHAFT END FINISH ORDERING SHEET

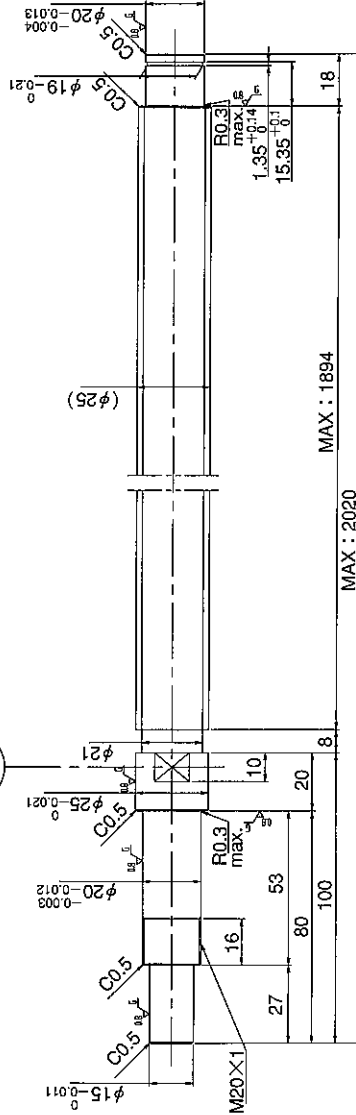
Screw shaft diameter $\phi 25$, Lead 25

(Unit : mm)

GE2525AS-BALR- X -C7M
 GG2525AS-BALR- X -C5



Select the orientation of nut flange by circling A or B.
 No marking means "B" orientation as default.



Applicable Support Unit

Direct mount : BUK-20A (Fixed end unit+Supported end unit) Refer to Page.407

Circle flange : BUM-20 (Fixed end unit+Supported end bearing) Refer to Page.414

| | |
|-----------------|--------------------------|
| Company Name | |
| Telephone | Name of Person in Charge |
| Company Address | |