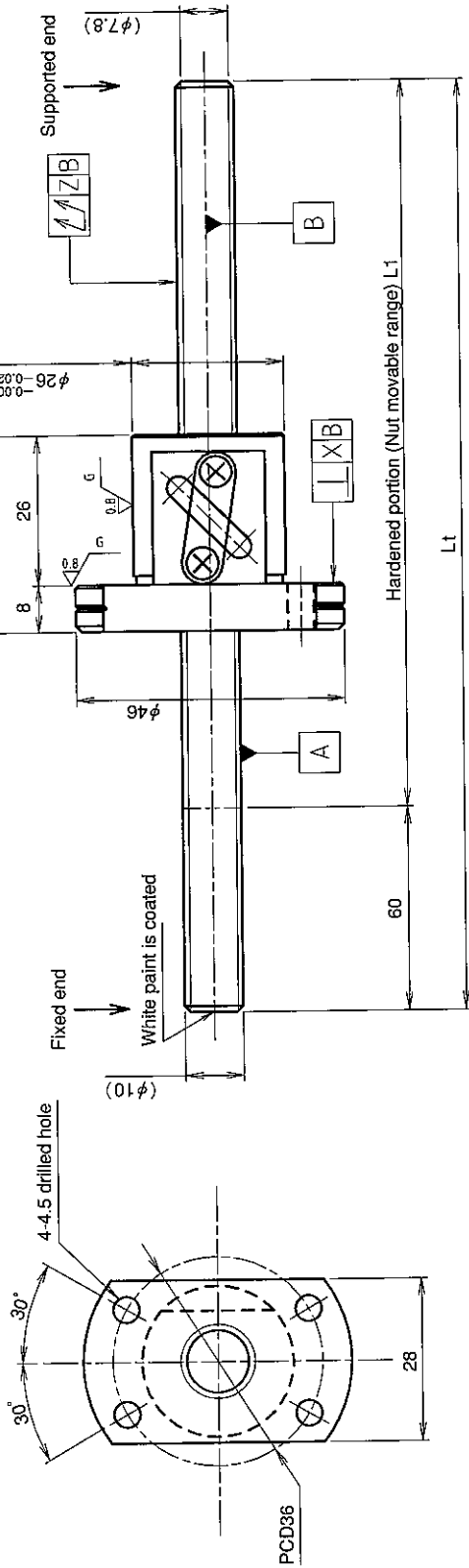


# UNFINISHED SHAFT ENDS

(Unit : mm)



Ball screw specifications

Screw shaft dia.	10	Basic dynamic load rating	2300N
Lead	4	Basic static load rating	4800N
Thread direction	Right-hand	Lubricant	Alvania Grease No.2
Number of circuits	2.5turn 1circuit	Surface treatment	Without
Ball diameter	2.3812		

Table of optional specifications for each model

Additional machining	Surface treatment	Difference of grease of shaft end (Note 1)	Direction of nut
○	○	○	○

(Note 1) The above-mentioned surface treatment is LD treatment (coating thickness : 1 to 2  $\mu\text{m}$ ).

Model No.	Axial clearance	$L_1$	X	Y	Z	Wiper
GW1004DS-HANR-0400A	~0.030	340	0.020	0.020	0.080	Without
GW1004DS-HANR-0600A		540			0.120	

- Notation of standard rolled ball screw
- Standard length shaft without end machining  
GW1004DS-HANR-□□□□□□□□□□
  - With end machining specified on your drawing  
GW1004DS-HANR-□□□□□□□□□□-C7Y

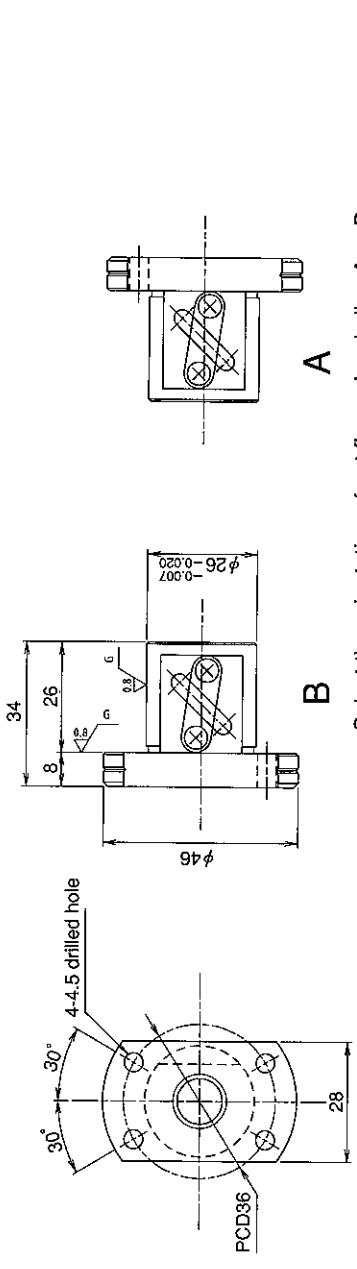
Overall length    Thread length

# SHAFT END FINISH ORDERING SHEET

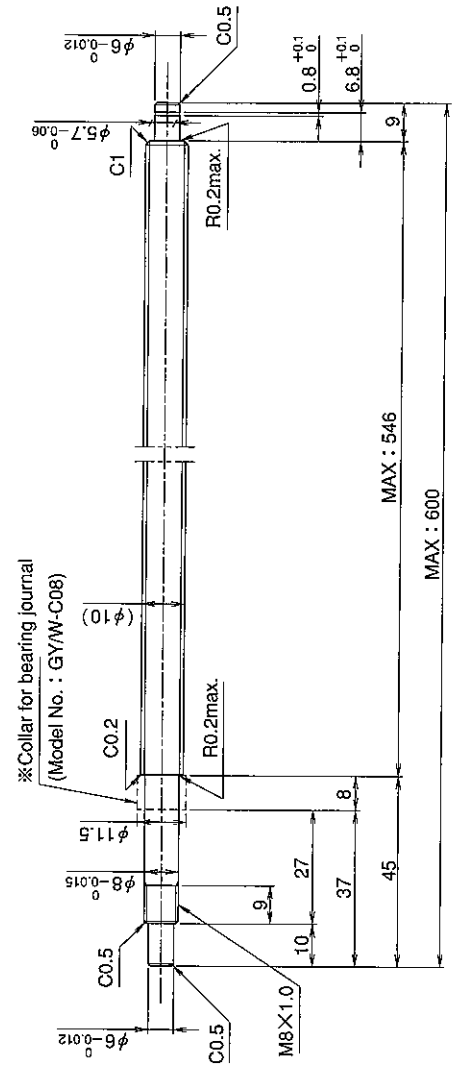
Screw shaft diameter  $\phi 10$ , Lead 4 (M nut)

(Unit : mm)

GW1004DS-HANR- X  -C7Y



Select the orientation of nut flange by circling A or B.  
No marking means "B" orientation as default.



※ Please place an order for collar separately.  
Applicable Support Unit  
Direct mount : BUK-8A (Fixed end unit+Supported end unit) Refer to Page.403  
Circle flange : BUM-8 (Fixed end unit+Supported end bearing) Refer to Page.410

Company Name	
Telephone	Name of Person in Charge
Company Address	

Refer to page 24 for NOTATION OF MODEL NUMBER.