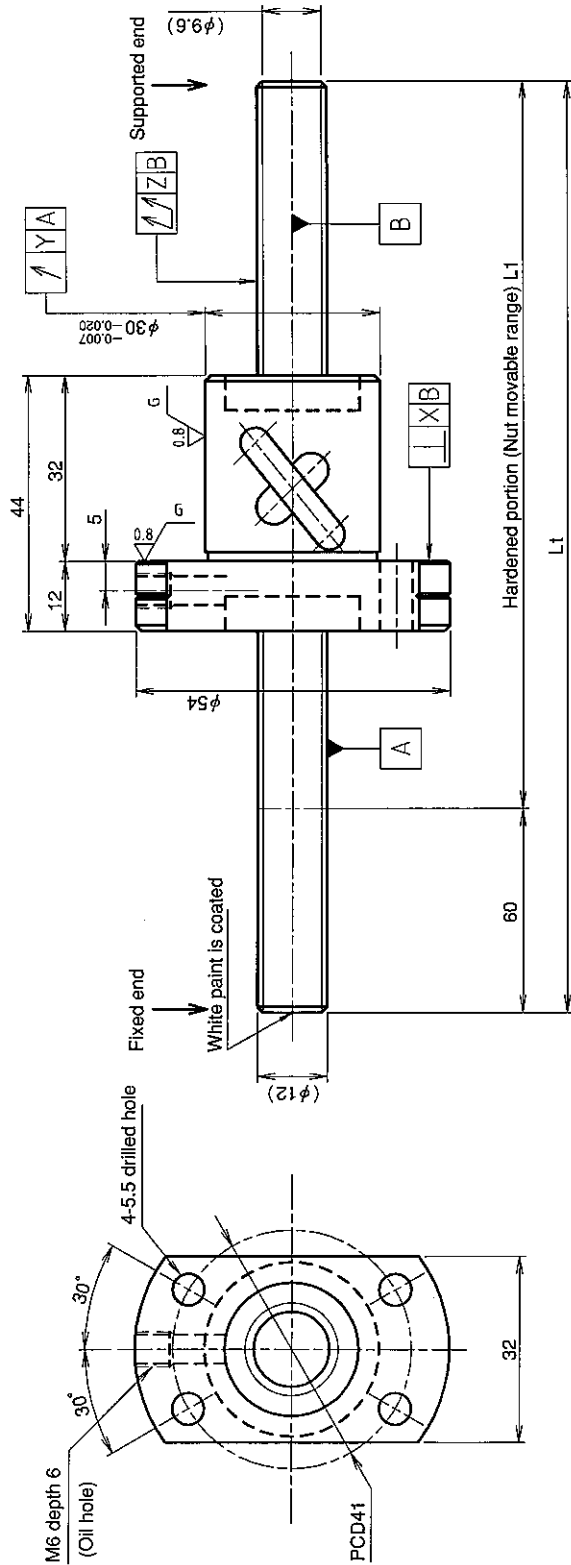


UNFINISHED SHAFT ENDS

Screw shaft diameter $\phi 12$, Lead 10 (U nut)

(Unit : mm)



Ball screw specifications

Screw shaft dia.	12	Basic dynamic load rating	2850N
Lead	10	Basic static load rating	4950N
Thread direction	Right-hand	Lubricant	Alvania Grease No.2
Number of circuits	1.5turn 1circu/l	Surface treatment	Without
Ball diameter	3.175		

Table of optional specifications for each model

Additional machining of shaft end	Surface treatment (Note 1)	Difference of grease	Direction of nut removal	Wiper
○	○	○	○	○

(Note 1) The above-mentioned surface treatment is LD treatment (coating thickness : 1 to 2 μ m).

Model No.	Axial clearance	L ₁	L _t	X	Y	Z	Wiper
GW1210AS-HULR-0400A	~0.030	340	400	0.020	0.020	0.080	Lip seal
GW1210AS-HULR-0800A		740	800			0.200	

- Notation of standard rolled ball screw**
- Standard length shaft without end machining
 GW1210AS-HULR-□□□□A
 - With end machining specified on your drawing
 GW1210AS-HULR-□□□□X□□□□-C7Y

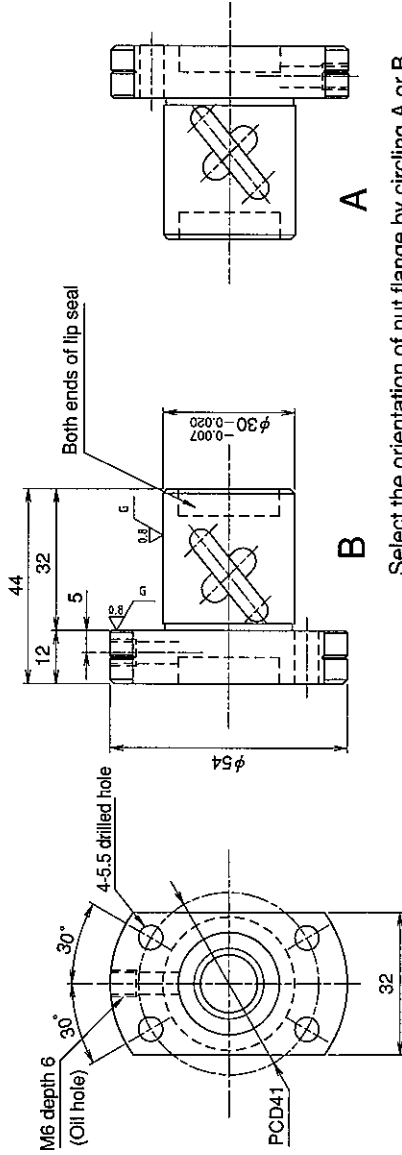
Overall length Thread length

SHAFT END FINISH ORDERING SHEET

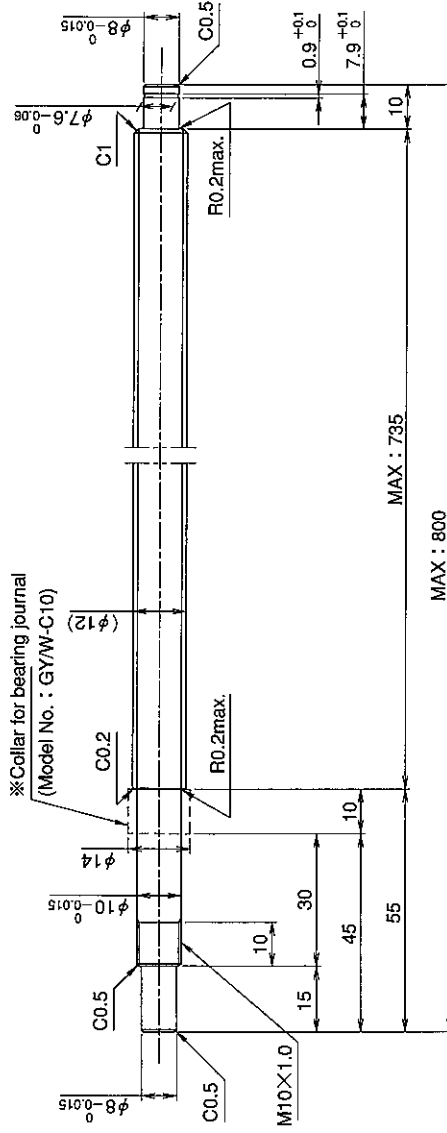
Screw shaft diameter $\phi 12$, Lead 10 (U nut)

(Unit : mm)

GW1210AS-HULR- X -C7Y



Select the orientation of nut flange by circling A or B.
No marking means "B" orientation as default.



※Please place an order for collar separately.

Applicable Support Unit

Direct mount : BUK-10A (Fixed end unit+Supported end unit) Refer to Page.404

Circle flange : BUM-10 (Fixed end unit+Supported end bearing) Refer to Page.411

Company Name	
Telephone	Name of Person in Charge
Company Address	