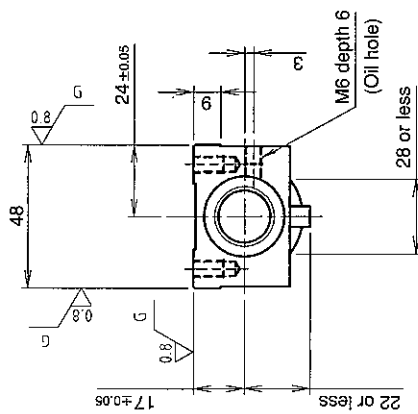
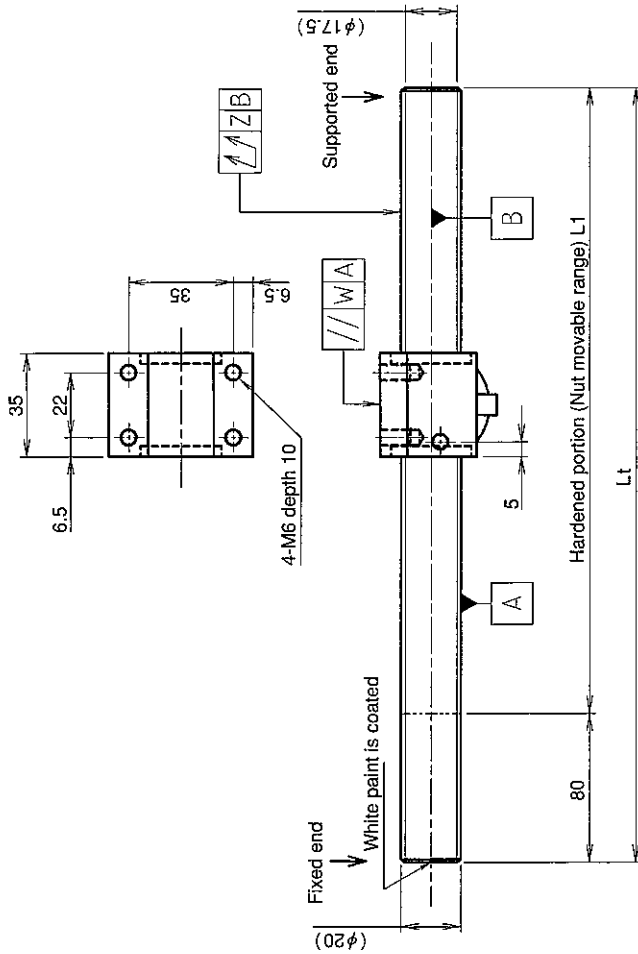


**UNFINISHED SHAFT ENDS**

**Screw shaft diameter  $\phi 20$ , Lead 5 (K nut)**

(Unit : mm)



**Ball screw specifications**

Screw shaft dia.	20	Basic dynamic load rating	6200N
Lead	5	Basic static load rating	14700N
Thread direction	Right-hand	Lubricant	Alvania Grease No.2
Number of circuits	2.5turn 1circuit	Surface treatment	Phosphate coating (Nut only)
Ball diameter	3.175		

**Table of optional specifications for each model**

Additional machining of shaft end	Surface treatment (Note 1)	Difference of grease	Direction of nut removal	Wiper
○	○	○	○	○

(Note 1) The above-mentioned surface treatment is LD treatment (coating thickness : 1 to 2  $\mu$ m).

Model No.	Axial clearance	L <sub>1</sub>	L <sub>t</sub>	W	Z	Wiper
GW2005DS-NKLR-0600A		520	600		0.070	
GW2005DS-NKLR-1200A	~0.030	1120	1200	0.017	0.120	Lip seal
GW2005DS-NKLR-2000A		1920	2000		0.270	

- Notation of standard rolled ball screw**
- Standard length shaft without end machining
  - GW2005DS-NKLR-□□□□A
  - With end machining specified on your drawing
  - GW2005DS-NKLR-□□□□X□□□□-C7Y

Overall length Thread length

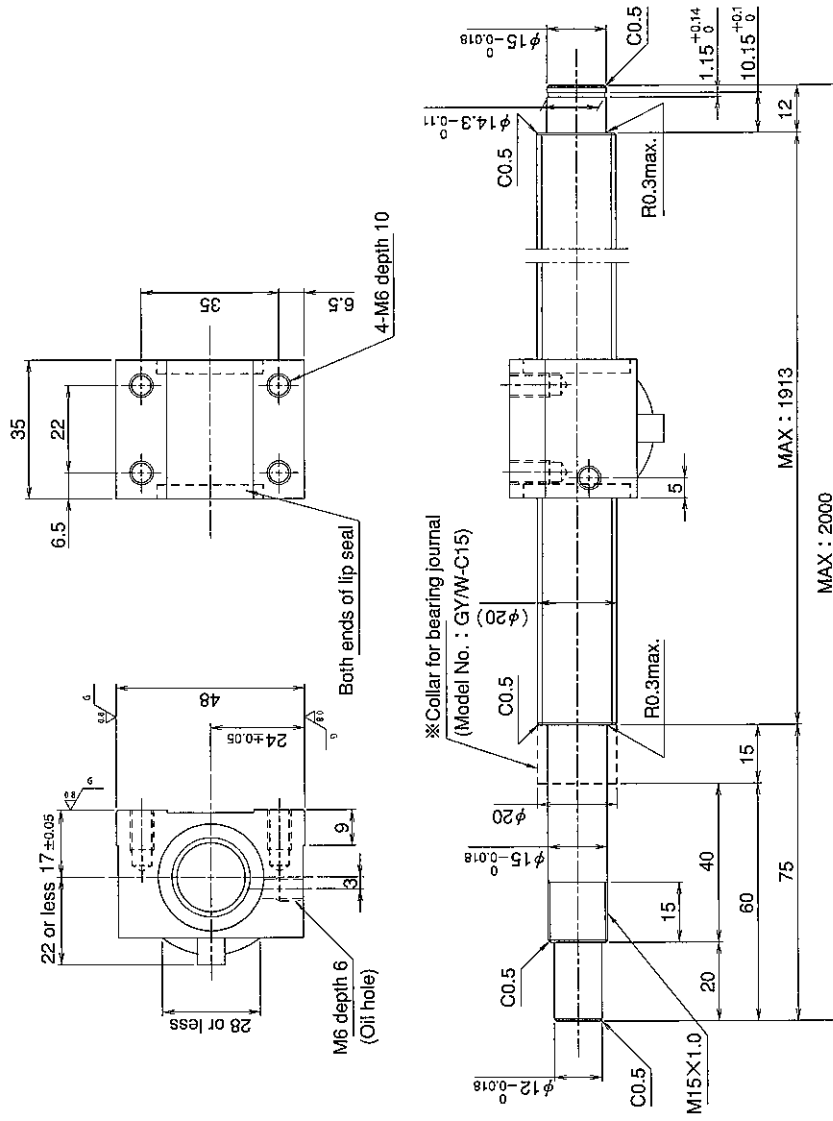
**KURODA** Standard Rolled Ball Screw : GW Series (Accuracy grade C7)

**SHAFT END FINISH ORDERING SHEET**

Screw shaft diameter  $\phi 20$ , Lead 5 (K nut)

(Unit : mm)

GW2005DS-NKLR-    X    -C7Y



※ Please place an order for collar separately.  
Applicable Support Unit

Direct mount : BUK-15A (Fixed end unit + Supported end unit) Refer to Page.406

Circle flange : BUM-15 (Fixed end unit + Supported end bearing) Refer to Page.413

Company Name		
Telephone		
Company Address		
	Name of Person in Charge	

Refer to page 24 for NOTATION OF MODEL NUMBER.