

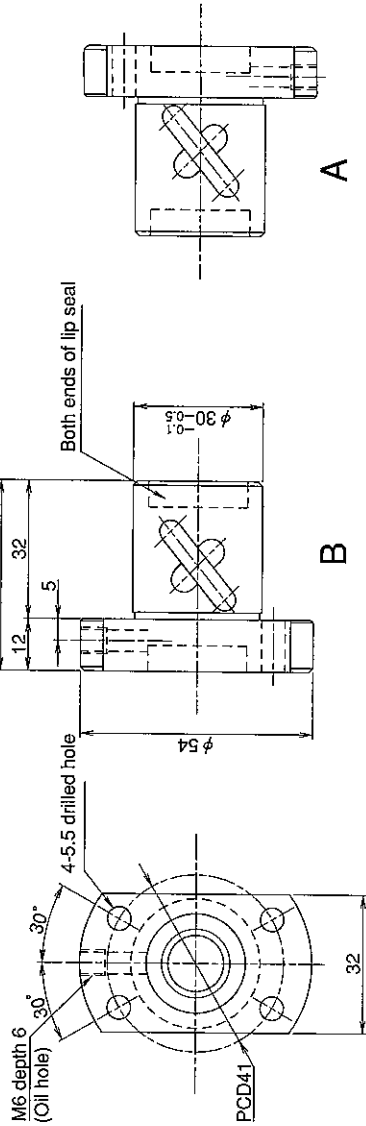


**SHAFT END FINISH ORDERING SHEET**

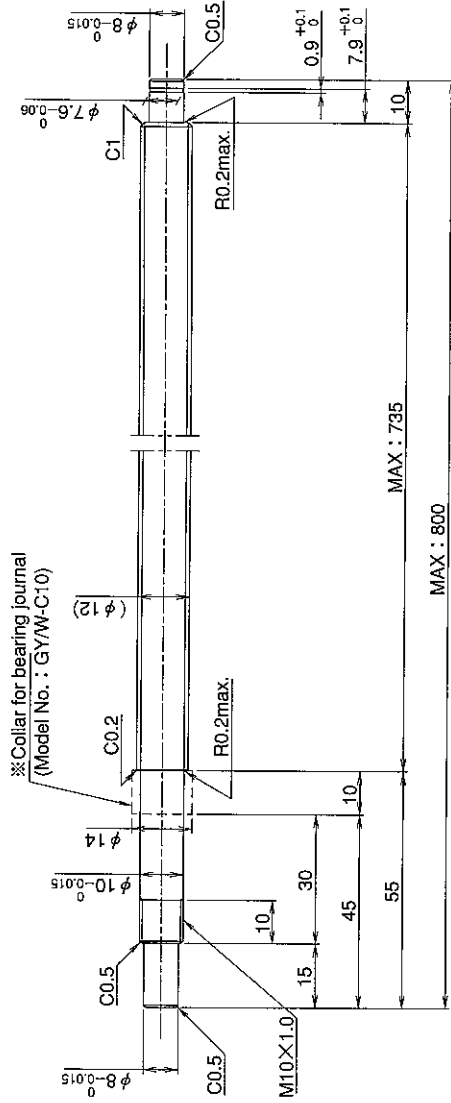
Screw shaft diameter  $\phi 12$ , Lead 10 (U nut)

(Unit : mm)

GY1210AS-HULR-     X    -CAY



**A**  
 Select the orientation of nut flange by circling A or B.  
 No marking means "B" orientation as default.



※ Please place an order for collar separately.

Applicable Support Unit

Direct mount : BUIK-10A (Fixed end unit+Supported end unit) Refer to Page.404

Circle flange : BUM-10 (Fixed end unit+Supported end bearing) Refer to Page.411

Company Name	
Telephone	Name of Person in Charge
Company Address	