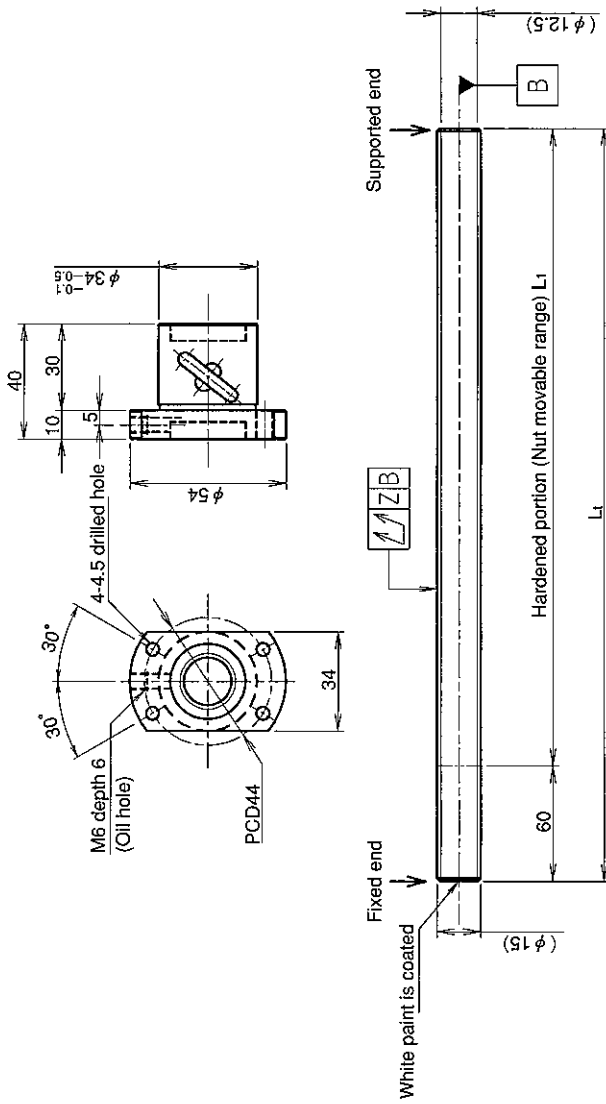


UNFINISHED SHAFT ENDS

Screw shaft diameter ϕ 15, Lead 5 (U nut)

(Unit : mm)



Ball screw specifications

Screw shaft dia.	15	Basic dynamic load rating	5100N
Lead	5	Basic static load rating	10500N
Thread direction	Right-hand	Lubricant	Alvania Grease No.2
Number of circuits	2.5turn 1circuit	Surface treatment	Phosphate coating
Ball diameter	3.175		

Model No.	Axial clearance	L ₁	L _t	Z	Wiper
GY1505DS-HULR-0600A	~0.100	540	600	0.140	Lip seal
GY1505DS-HULR-1200A		1140	1200	0.400	

Table of optional specifications for each model

Additional machining of shaft end	Surface treatment (Note 1)	Difference of grease	Direction of nut removal	Wiper removal
○	○	○	○	○

(Note 1) The above-mentioned surface treatment is LD treatment (coating thickness : 1 to 2 μ m).

Notation of standard rolled ball screw

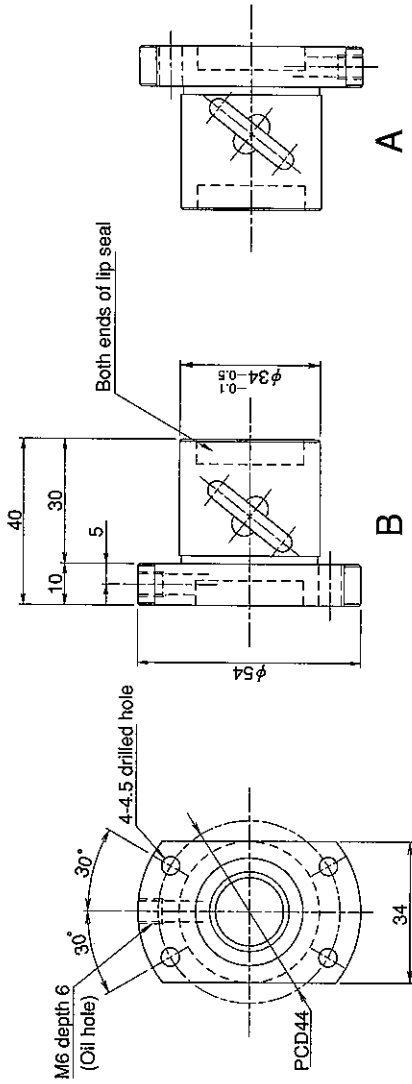
- Standard length shaft without end machining (Matched screw shaft and nut)
GY1505DS-HULR-□□□□X□□□□□-CAY
- Nut only without screw shaft
GY1505DS-HULR
- Screw shaft only without end machining
GY1505ZZ-ZZZZ-□□□□□□□□□□D
- With end machining specified on your drawing (Matched screw shaft and nut)
GY1505DS-HULR-□□□□X□□□□□-CAY
- With end machining specified on your drawing (Screw shaft only)
GY1505ZZ-ZZZZ-□□□□Y□□□□□-CAY

SHAFT END FINISH ORDERING SHEET

Screw shaft diameter $\phi 15$, Lead 5 (U nut)

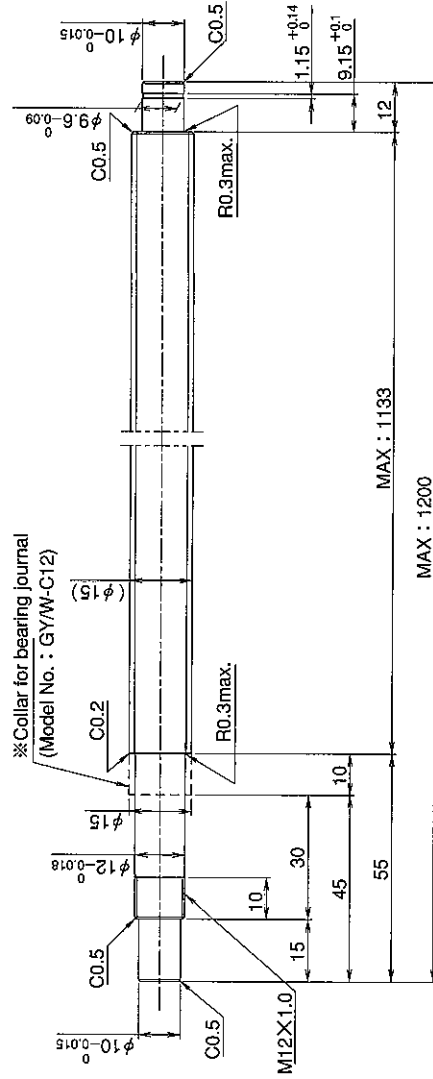
(Unit : mm)

GY1505DS-HULR- X -CAY



A

Select the orientation of nut flange by circling A or B.
No marking means "B" orientation as default.



※ Please place an order for collar separately.

Applicable Support Unit

Direct mount : BUK-12A (Fixed end unit+Supported end unit) Refer to Page.405

Circle flange : BUM-12 (Fixed end unit+Supported end bearing) Refer to Page.412

Company Name	
Telephone	Name of Person in Charge
Company Address	