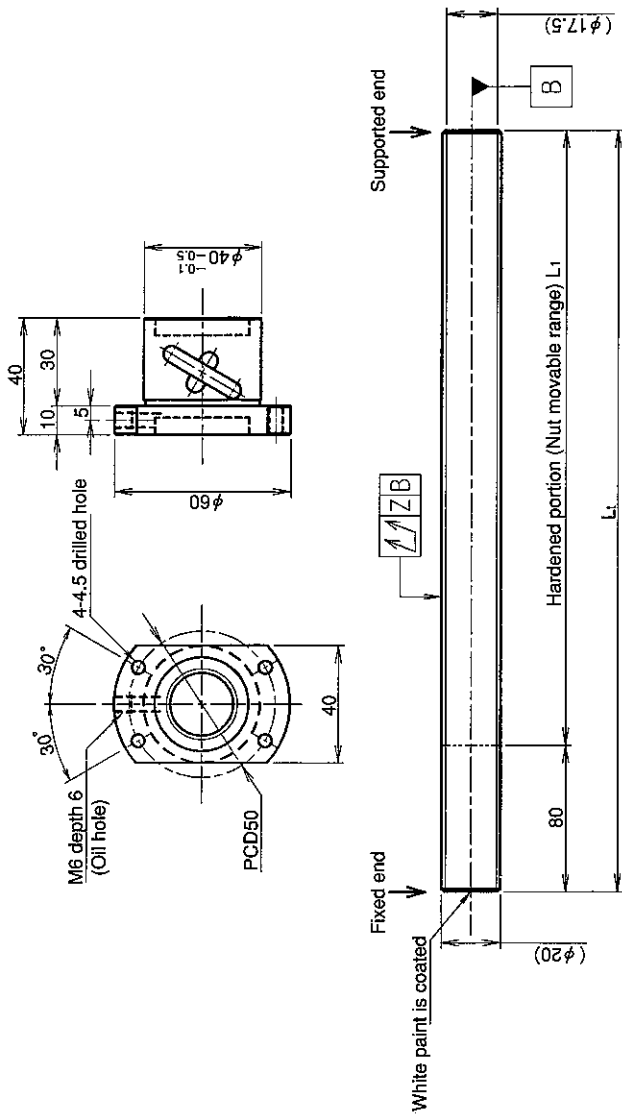


UNFINISHED SHAFT ENDS

Screw shaft diameter $\phi 20$, Lead 5 (U nut)

(Unit : mm)



Ball screw specifications

Screw shaft dia.	20	Basic dynamic load rating	6200N
Lead	5	Basic static load rating	14700N
Thread direction	Right-hand	Lubricant	Alvania Grease No.2
Number of circuits	2.5turn 1circuit	Surface treatment	Phosphate coating
Ball diameter	3.175		

Model No.	Axial clearance	L ₁	Z	Wiper
GY2005DS-HULR-0600A	~0.100	520	0.140	
GY2005DS-HULR-1200A		1120	0.240	Lip seal
GY2005DS-HULR-2000A		1920	0.640	

Table of optional specifications for each model

Additional machining of shaft end	Surface treatment (Note 1)	Direction of grease	Direction of nut removal	Wiper
○	○	○	○	○

(Note 1) The above-mentioned surface treatment is LD treatment (coating thickness : 1 to 2 μ m).

Notation of standard rolled ball screw

- Standard length: shaft without end machining (Matched screw shaft and nut)
GY2005DS-HULR-□□□□□□X□□□□□□-CAY
- Nut only without screw shaft
GY2005DS-HULR
- Screw shaft only without end machining
GY2005ZZ-ZZZZ-□□□□□□

- With end machining specified on your drawing (Matched screw shaft and nut)
GY2005DS-HULR-□□□□□□X□□□□□□-CAY
- With end machining specified on your drawing (Screw shaft only)
GY2005ZZ-ZZZZ-□□□□□□Y□□□□□□-CAY

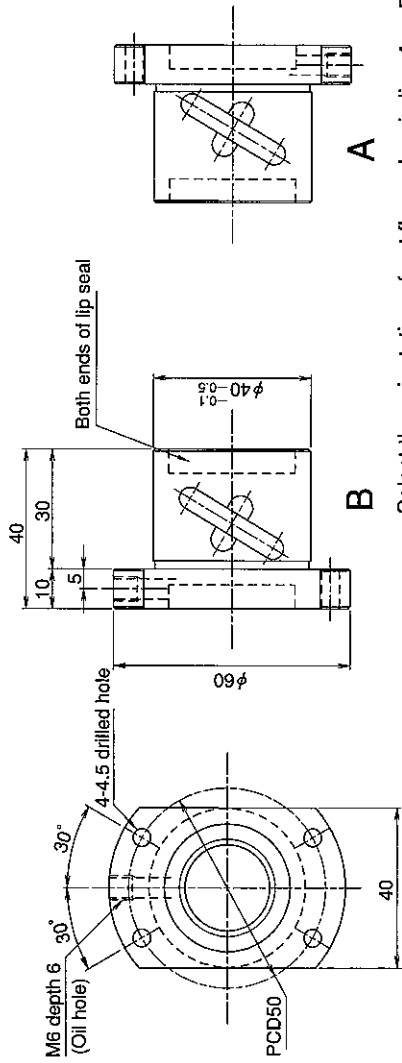
Overall length Thread length

SHAFT END FINISH ORDERING SHEET

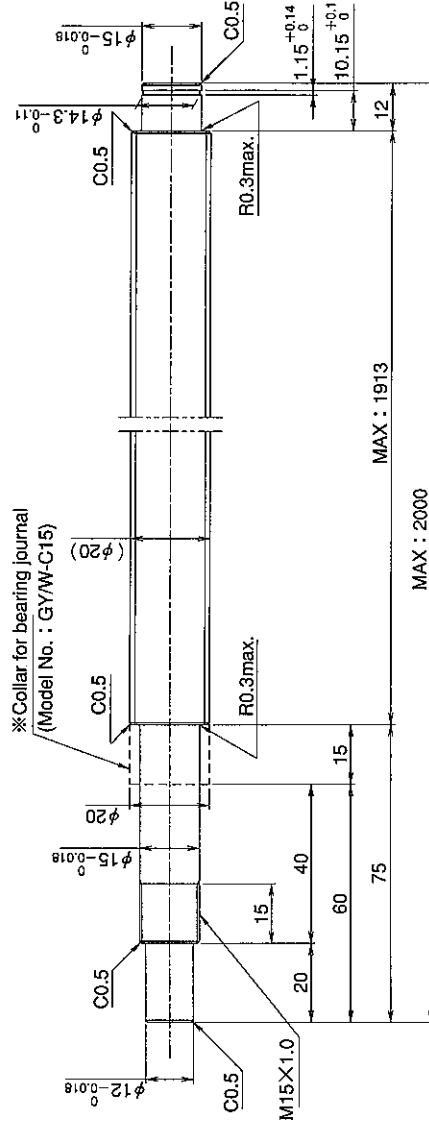
Screw shaft diameter $\phi 20$, Lead 5 (U nut)

(Unit : mm)

GY2005DS-HULR- X -CAY



Select the orientation of nut flange by circling A or B.
No marking means "B" orientation as default.



※Please place an order for collar separately.

Applicable Support Unit

Direct mount : BUK-15A (Fixed end unit+Supported end unit) Refer to Page.406

Circle flange : BUM-15 (Fixed end unit+Supported end bearing) Refer to Page.413

Company Name	
Telephone	Name of Person in Charge
Company Address	