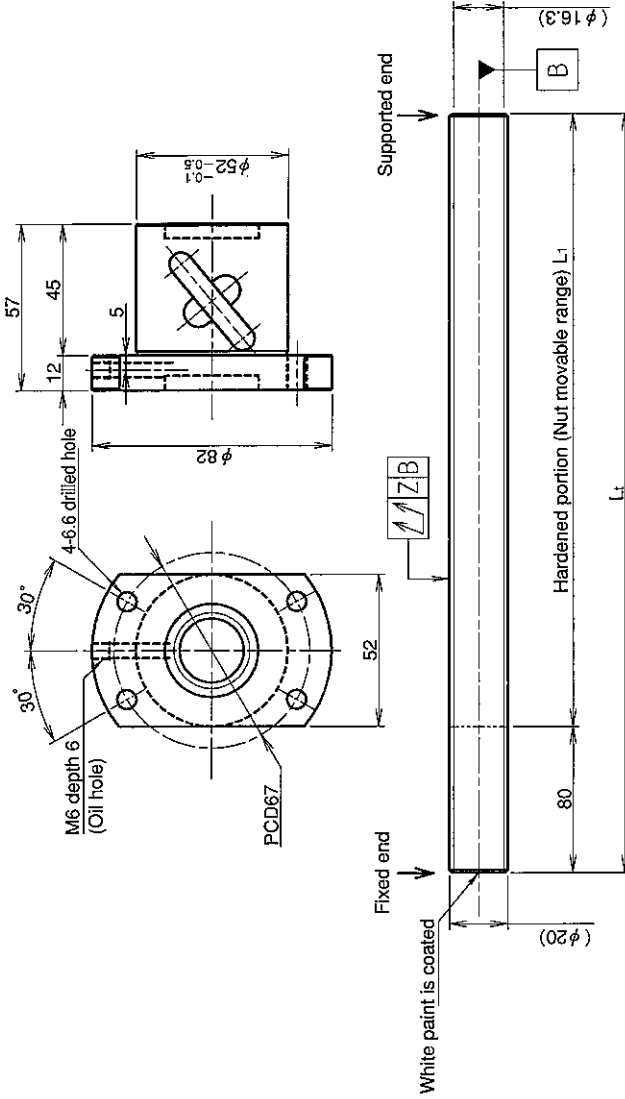


UNFINISHED SHAFT ENDS

Screw shaft diameter $\phi 20$, Lead 10 (U nut)

(Unit : mm)



Ball screw specifications

Screw shaft dia.	20	Basic dynamic load rating	10600N
Lead	10	Basic static load rating	22700N
Thread direction	Right-hand	Lubricant	Alvania Grease No.2
Number of circuits	2.5turn 1circuit	Surface treatment	Phosphate coating
Ball diameter	4.7625		

Table of optional specifications for each model

Additional machining of shaft end	Surface treatment (Note 1)	Difference of grease	Direction of nut	Wiper removal
○	○	○	○	○

(Note 1) The above-mentioned surface treatment is LD treatment (coating thickness : 1 to 2 μm).

Model No.	Axial clearance	L ₁	Z	Wiper
GY2010DS-HULR-0600A	~0.150	520	0.140	
GY2010DS-HULR-1200A		1120	0.240	Lip seal
GY2010DS-HULR-2000A		1920	0.640	

Notation of standard rolled ball screw

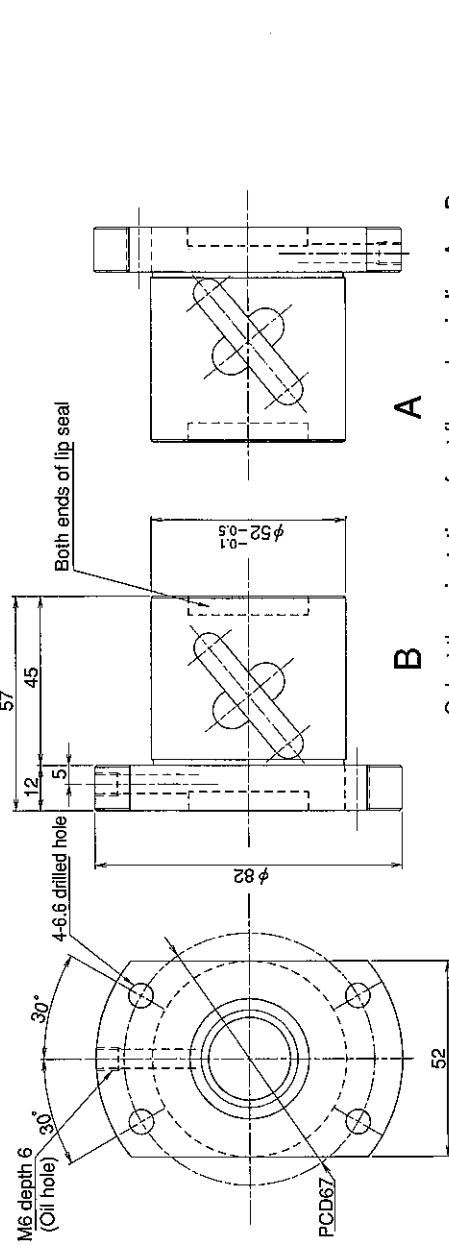
- Standard length shaft without end machining (Matched screw shaft and nut)
GY2010DS-HULR-X-CAY
 - Nut only without screw shaft
GY2010DS-HULR--CAY
 - Screw shaft only without end machining
GY2010ZZ-ZZZZ-D
- Overall length Thread length

SHAFT END FINISH ORDERING SHEET

Screw shaft diameter $\phi 20$, Lead 10 (U nut)

(Unit : mm)

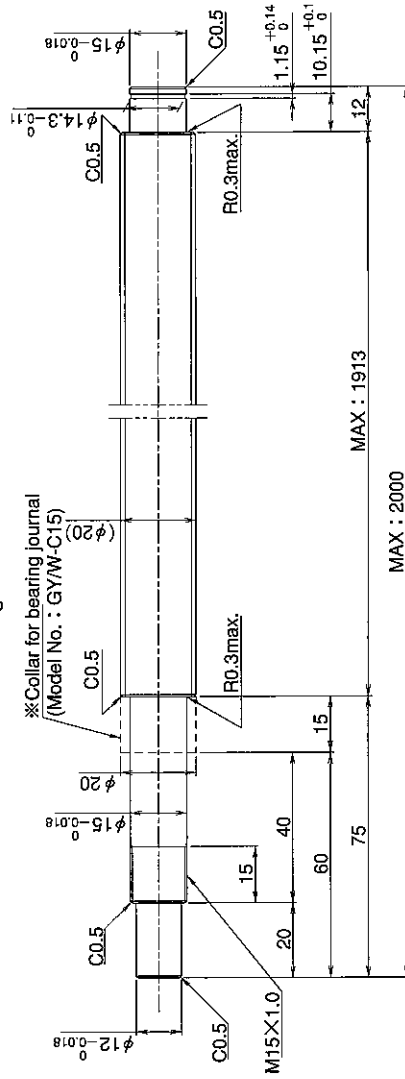
GY2010DS-HULR- X -CAY



A

B

Select the orientation of nut flange by circling A or B.
No marking means "B" orientation as default.



※ Please place an order for collar separately.

Applicable Support Unit

Direct mount : BUK-15A (Fixed end unit + Supported end unit) Refer to Page.406

Circle flange : BUM-15 (Fixed end unit + Supported end bearing) Refer to Page.413

Company Name	
Telephone	Name of Person in Charge
Company Address	