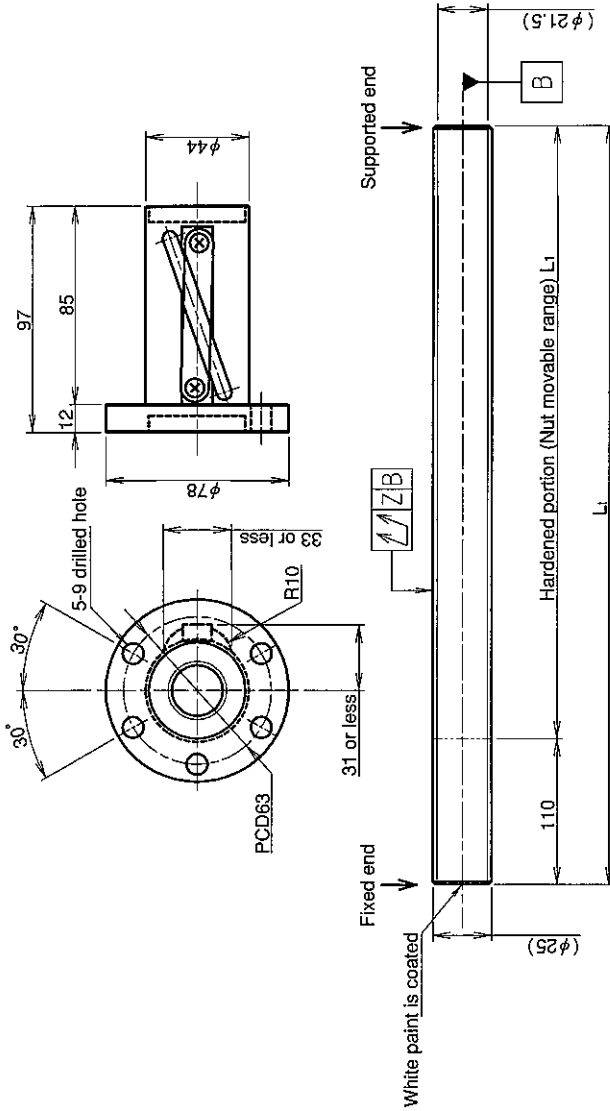


KURODA Standard Rolled Ball Screw : GY Series (Accuracy grade C10)

UNFINISHED SHAFT ENDS

Screw shaft diameter ϕ 25, Lead 25 (T nut)

(Unit : mm)



Ball screw specifications

Screw shaft dia.	25	Basic dynamic load rating	9300N
Lead	25	Basic static load rating	22700N
Thread direction	Right-hand	Lubricant	Alvania Grease No.2
Number of circuits	2.5turn 1circuit	Surface treatment	Phosphate coating
Ball diameter	3.9688		

Model No.	Axial clearance	L _t	L ₁	Z	Wiper
GY2525DS-CTLR-1000A	~0.120	890	1000	0.160	Lip seal
GY2525DS-CTLR-2000A		1890	2000	0.400	
GY2525DS-CTLR-2500A		2390	2500	0.640	

Table of optional specifications for each model

Additional machining of shaft end	Surface treatment (Note 1)	Difference of grease	Direction of nut removal	Wiper removal
<input type="radio"/>	<input type="radio"/>	<input type="radio"/>	<input type="radio"/>	<input type="radio"/>

(Note 1) The above-mentioned surface treatment is LD treatment (coating thickness : 1 to 2 μ m).

Notation of standard rolled ball screw

- Standard length shaft without end machining (Matched screw shaft and nut)
GY2525DS-CTLR-A
 - Nut only without screw shaft
GY2525DS-CTLR
 - Screw shaft only without end machining
GY2525ZZ-ZZZZ-D
 - With end machining specified on your drawing (Matched screw shaft and nut)
GY2525DS-CTLR--CAY
 - With end machining specified on your drawing (Screw shaft only)
GY2525ZZ-ZZZZ--CAY
- Overall length Thread length

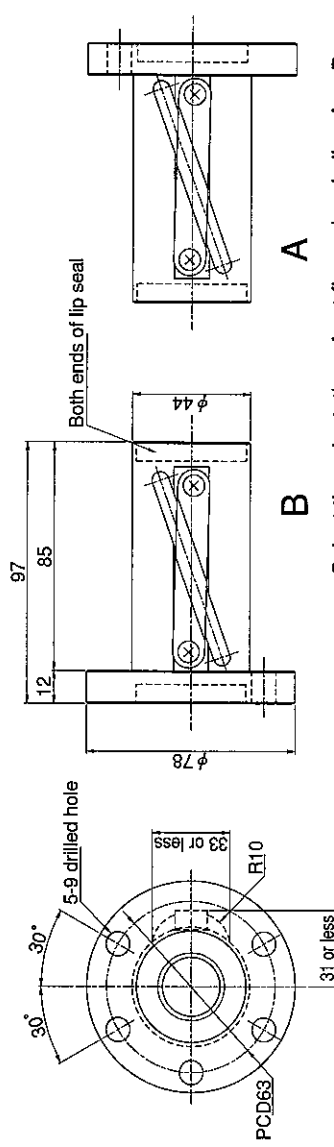
Refer to page 24 for NOTATION OF MODEL NUMBER.

SHAFT END FINISH ORDERING SHEET

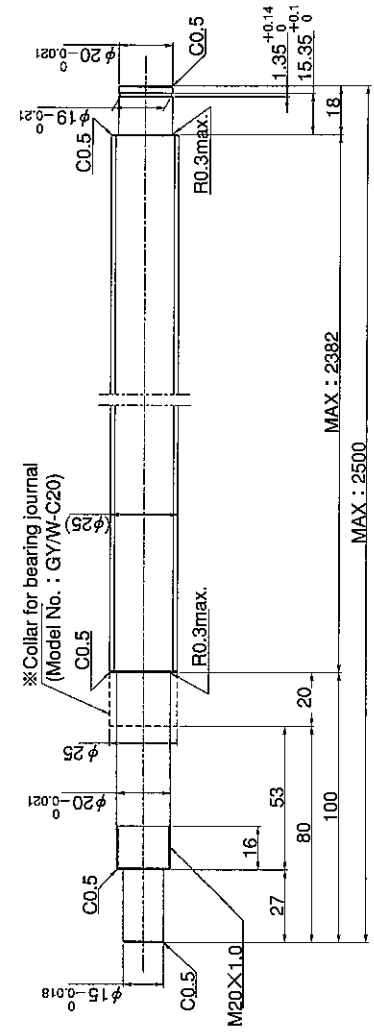
Screw shaft diameter $\phi 25$, Lead 25 (T nut)

(Unit : mm)

GY2525DS-CTLR- X -CAY



Select the orientation of nut flange by circling A or B.
No marking means "B" orientation as default.



※Please place an order for collar separately.
Applicable Support Unit
Direct mount : BUK-20A (Fixed end unit+Supported end unit) Refer to Page.407
Circle flange : BUM-20 (Fixed end unit+Supported end bearing) Refer to Page.414

Company Name	
Telephone	Name of Person in Charge
Company Address	

Refer to page 24 for NOTATION OF MODEL NUMBER.