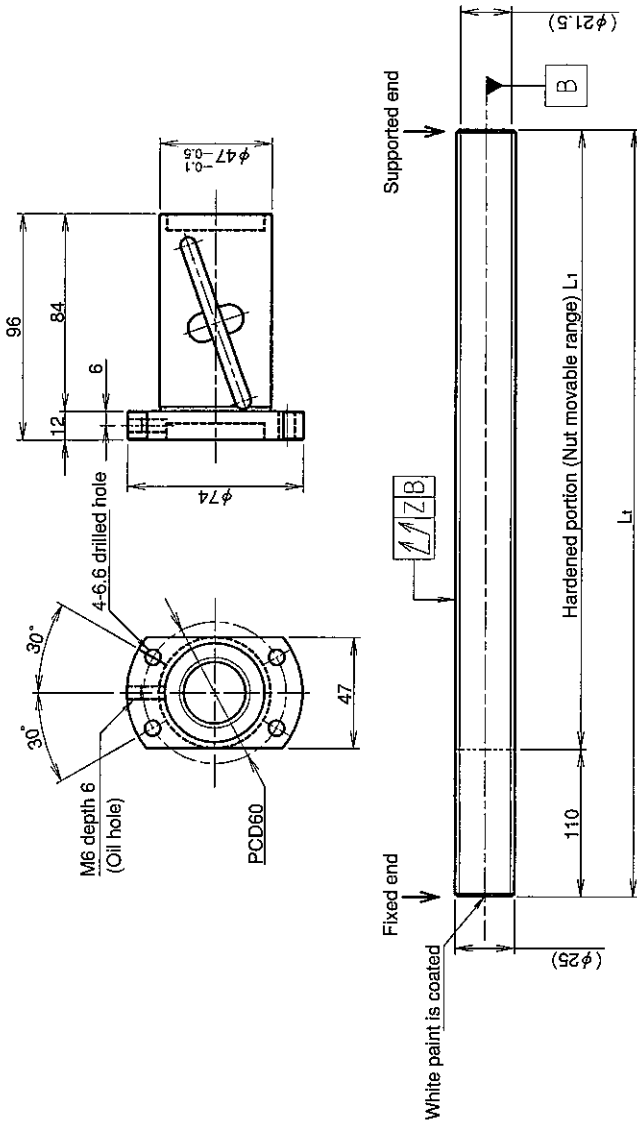


UNFINISHED SHAFT ENDS

Screw shaft diameter $\phi 25$, Lead 25 (U nut)

(Unit : mm)



Ball screw specifications

Screw shaft dia.	25	Basic dynamic load rating	9300N
Lead	25	Basic static load rating	22700N
Thread direction	Right-hand	Lubricant	Alvania Grease No.2
Number of circuits	2.5turn 1circuit	Surface treatment	Phosphate coating
Ball diameter	3.9688		

Model No.	Axial clearance	L ₁	L _t	Z	Wiper
GY2525DS-HULR-1000A	~0.120	890	1000	0.160	Lip seal
GY2525DS-HULR-2000A		1890	2000	0.400	
GY2525DS-HULR-2500A		2390	2500	0.640	

Table of optional specifications for each model

Additional machining of shaft end	Surface treatment (Note 1)	Difference of grease	Direction of nut	Wiper removal
○	○	○	○	○

(Note 1) The above-mentioned surface treatment is LD treatment (coating thickness : 1 to 2 μm).

Notation of standard rolled ball screw

- Standard length shaft without end machining (Matched screw shaft and nut)
GY2525DS-HULR-□□□□□□X□□□□□□-CAY
- Nut only without screw shaft
GY2525DS-HULR
- Screw shaft only without end machining
GY2525ZZ-ZZZZ-□□□□□□□□□□

Notation of standard rolled ball screw

- With end machining specified on your drawing (Matched screw shaft and nut)
GY2525DS-HULR-□□□□□□X□□□□□□-CAY
- With end machining specified on your drawing (Screw shaft only)
GY2525ZZ-ZZZZ-□□□□□□Y□□□□□□-CAY

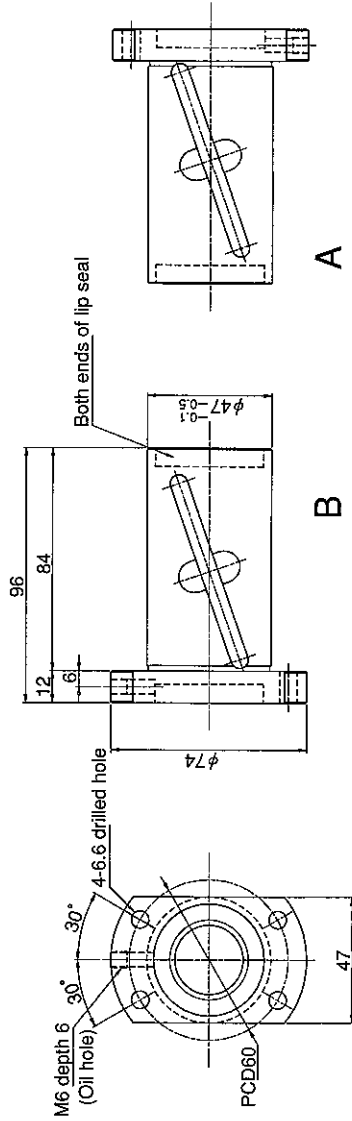
Overall length Thread length

SHAFT END FINISH ORDERING SHEET

Screw shaft diameter $\phi 25$, Lead 25 (U nut)

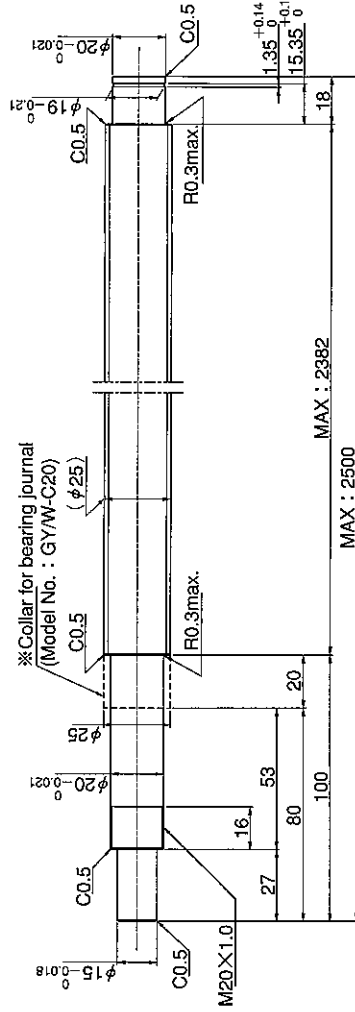
(Unit : mm)

GY2525DS-HULR- X -CAY



A

Select the orientation of nut flange by circling A or B.
No marking means "B" orientation as default.



※ Please place an order for collar separately.
Applicable Support Unit

Direct mount : BUK-20A (Fixed end unit + Supported end unit) Refer to Page.407

Circle flange : BUM-20 (Fixed end unit + Supported end bearing) Refer to Page.414

Company Name			
Telephone		Name of Person in Charge	
Company Address			