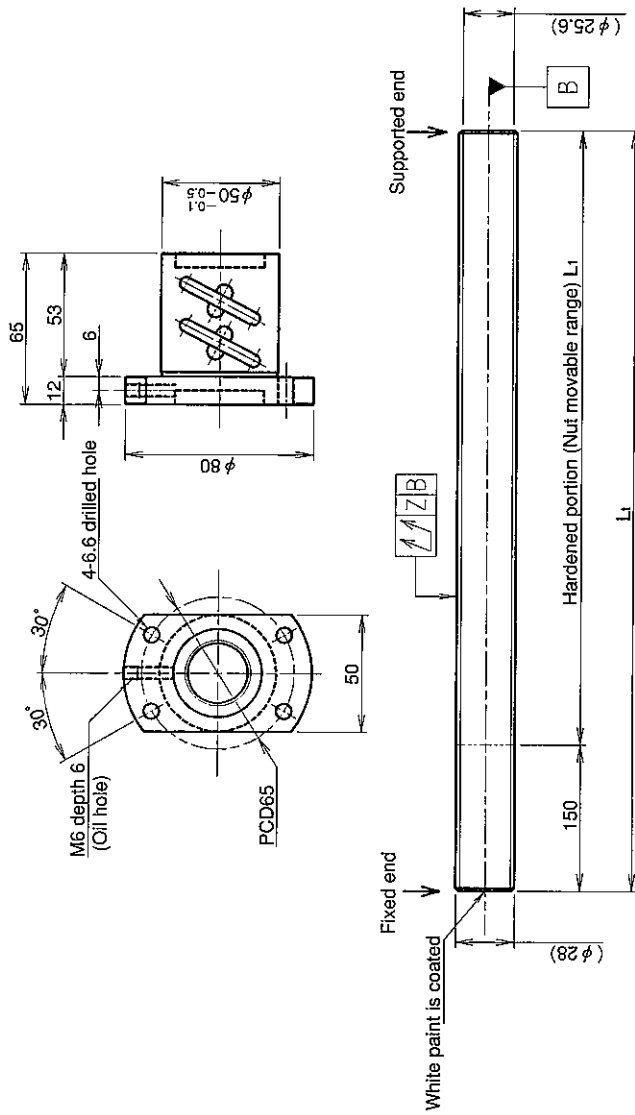


UNFINISHED SHAFT ENDS

Screw shaft diameter $\phi 28$, Lead 6 (U nut)

(Unit : mm)



Ball screw specifications

Screw shaft dia.	28	Basic dynamic load rating	12100N
Lead	6	Basic static load rating	42300N
Thread direction	Right-hand	Lubricant	Alvania Grease No.2
Number of circuits	2.5turn 2circuit	Surface treatment	Phosphate coating
Ball diameter	3.175		

Model No.	Axial clearance	L ₁	Z	Wiper
GY2806ES-HUBR-1000A		850	0.120	
GY2806ES-HUBR-2000A	~0.100	1850	0.240	Brush wiper
GY2806ES-HUBR-2500A		2350	0.640	

Table of optional specifications for each model

Additional machining of shaft end	Surface treatment (Note 1)	Difference of grease	Direction of nut	Wiper removal
○	○	○	○	○

(Note 1) The above-mentioned surface treatment is LD treatment (coating thickness : 1 to 2 μ m).

Notation of standard rolled ball screw

- Standard length shaft without end machining (Matched screw shaft and nut)
GY2806ES-HUBR-□□□□X□□□□□-CAY
- Nut only without screw shaft
GY2806ES-HUBR-□□□□□A
- Screw shaft only without end machining
GY2806ZZ-ZZZZ-□□□□□□□□□□

- With end machining specified on your drawing (Matched screw shaft and nut)
GY2806ES-HUBR-□□□□□X□□□□□-CAY
- With end machining specified on your drawing (Screw shaft only)
GY2806ZZ-ZZZZ-□□□□□Y□□□□□-CAY

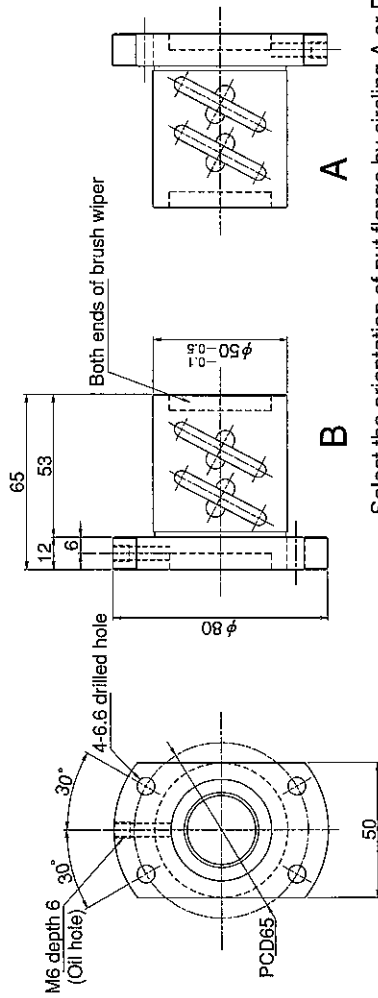
Overall length Thread length

SHAFT END FINISH ORDERING SHEET

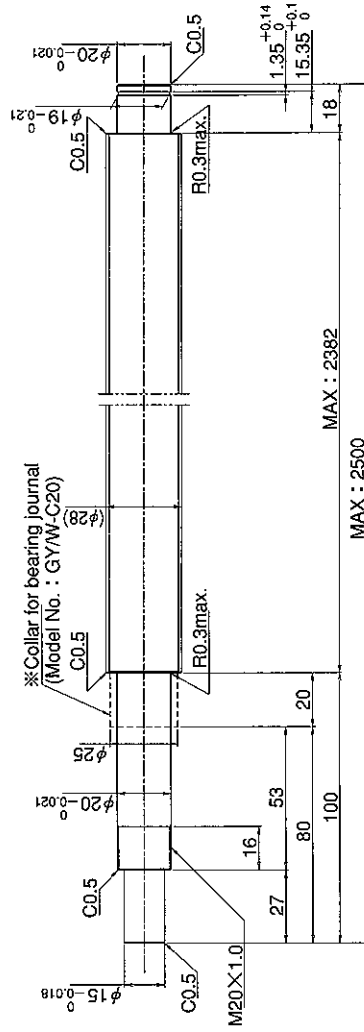
Screw shaft diameter $\phi 28$, Lead 6 (U nut)

(Unit : mm)

GY2806ES-HUBR- X -CAY



Select the orientation of nut flange by circling A or B.
No marking means "B" orientation as default.



※Please place an order for collar separately.

Applicable Support Unit

Direct mount : BUK-20A (Fixed end unit+Supported end unit) Refer to Page.407

Circle flange : BUM-20 (Fixed end unit+Supported end bearing) Refer to Page.414

Company Name	
Telephone	Name of Person in Charge
Company Address	