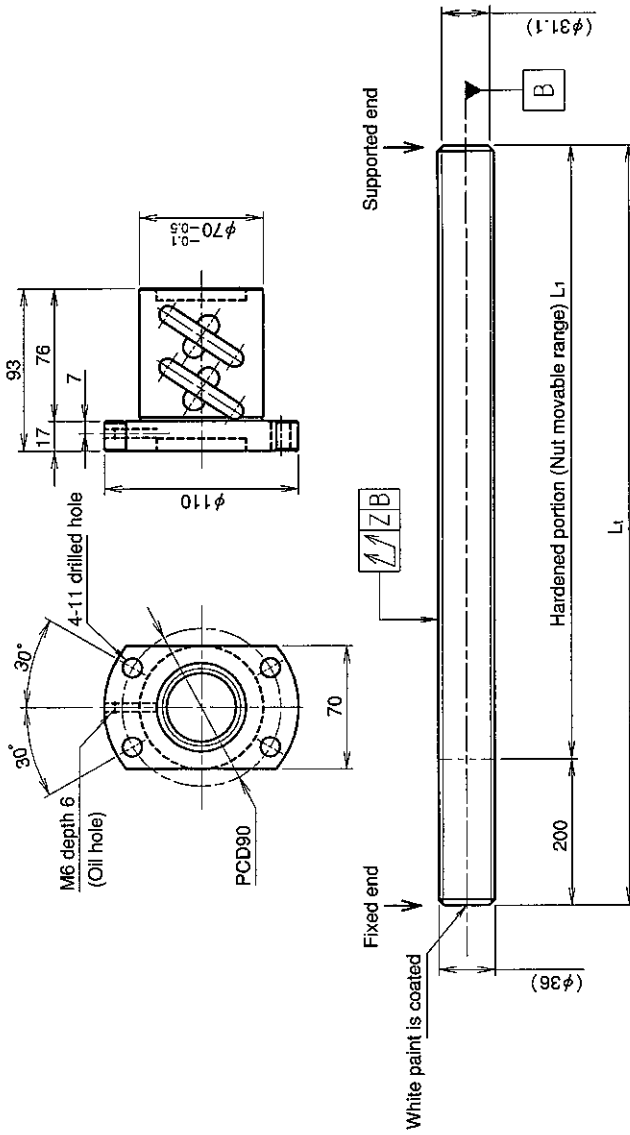


UNFINISHED SHAFT ENDS

Screw shaft diameter $\phi 36$, Lead 10 (U nut)

(Unit : mm)



Ball screw specifications

Screw shaft dia.	36	Basic dynamic load rating	35100N
Lead	10	Basic static load rating	98200N
Thread direction	Right-hand	Lubricant	Alvania Grease No.2
Number of circuits	2.5turn 2circuit	Surface treatment	Phosphate coating
Ball diameter	6.350		

Model No.	Axial clearance	L ₁	L _t	Z	Wiper
GY3610ES-HUBR-1000A	~0.200	800	1000	0.120	Brush wiper
GY3610ES-HUBR-2000A		1800	2000	0.240	
GY3610ES-HUBR-3000A		2800	3000	0.630	

Table of optional specifications for each model

Additional machining of shaft end	Surface treatment (Note 1)	Difference of grease	Direction of nut	Wiper removal
○	○	○	○	○

(Note 1) The above-mentioned surface treatment is LD treatment (coating thickness : 1 to 2 μ m).

Notation of standard rolled ball screw

- Standard length shaft without end machining (Matched screw shaft and nut)
GY3610ES-HUBR-□□□□A
- Nut only without screw shaft
GY3610ES-HUBR
- Screw shaft only without end machining
GY3610ZZ-ZZZZ-□□□□D

- With end machining specified on your drawing (Matched screw shaft and nut)
GY3610ES-HUBR-□□□□X□□□□-CAY
- With end machining specified on your drawing (Screw shaft only)
GY3610ZZ-ZZZZ-□□□□Y□□□□-CAY

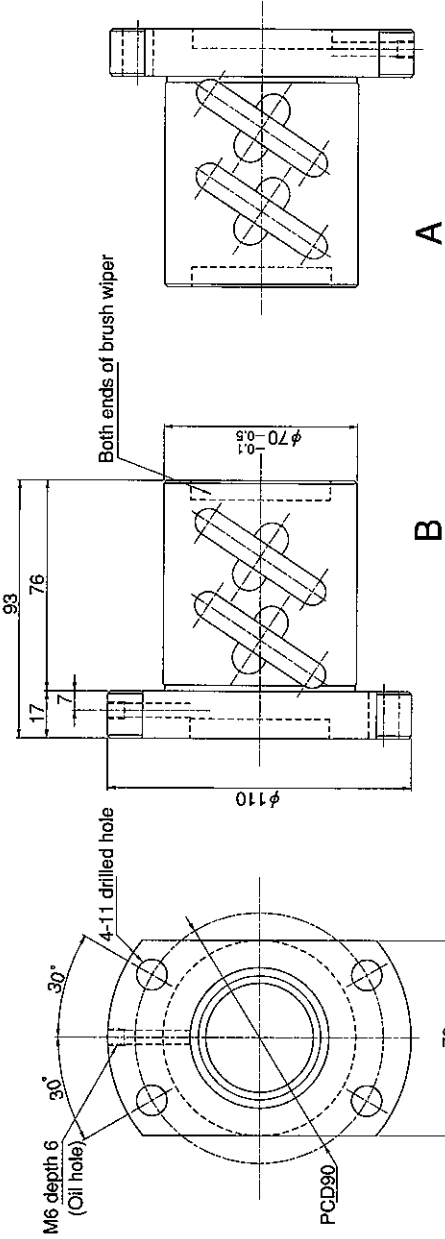
Overall length Thread length

SHAFT END FINISH ORDERING SHEET

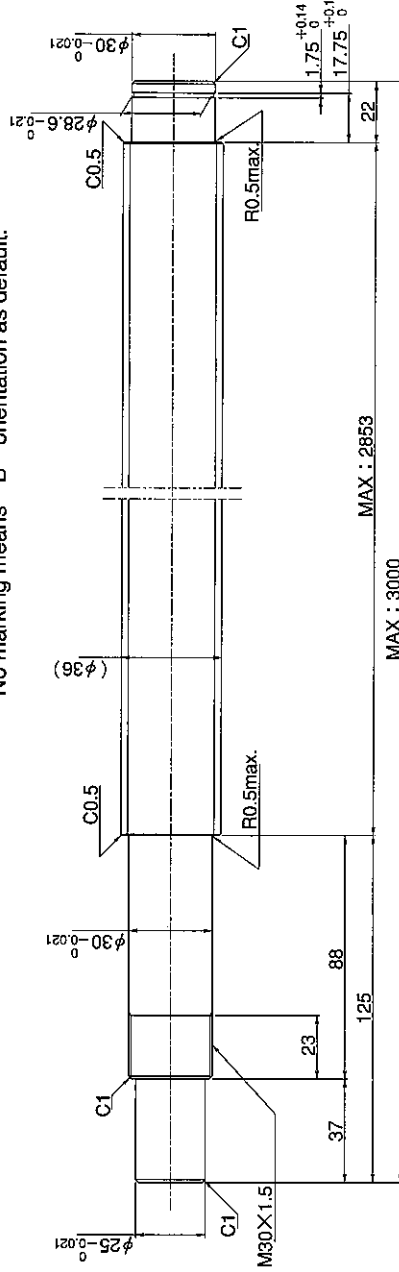
Screw shaft diameter $\phi 36$, Lead 10 (U nut)

(Unit : mm)

GY3610ES-HUBR- X -CAY



Select the orientation of nut flange by circling A or B.
No marking means "B" orientation as default.



Applicable Support Unit
BUT-30 (Fixed end unit) Refer to Page.420

Company Name	
Telephone	Name of Person in Charge
Company Address	