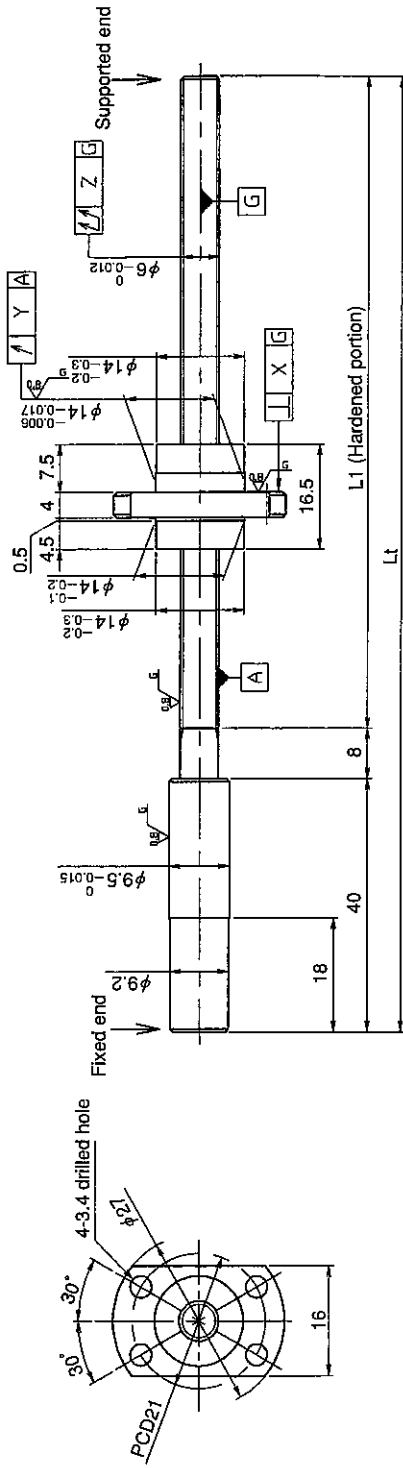


**UNFINISHED SHAFT ENDS**

**Screw shaft diameter  $\phi 6$ , Lead 6**

(Unit : mm)



Model No.	Axial clearance	L1	L1	L1	X	Y	Z	Lead accuracy		Wiper	Mass (kg)
								$\pm Ec$	ec		
HG0606QS-HEZR-0210A	$\sim 0.010$ (H)	162	210	0.010	0.012	0.065	0.023	0.018	0.018	※	0.09

Notation of standard ground ball screw

- Standard length shaft without end machining  
HG0606QS-HEZR-□□□□□
- With end machining specified on your drawing  
HG0606QS-HEZR-□□□□X□□□□-C5H

Overall length    Thread length

• JIS B 1192-1987 applies to accuracy standard values shown in the above-mentioned table.

• Asterisk part \* : The lip of the end cap serves as a wiper.

• End cap is made of resin (PPS).

• Support unit : BUK-6 and BUM-6 is recommended. (Refer to P.398)

• The grease is contained inside of nut only at the time of delivery. When using it, apply lubricant.

Table of optional specifications for each model

Additional machining of shaft end	Axial clearance adjustment (Note 2)	Surface treatment (Note 1)	Difference of grease (Note 1)	Direction of nut	Wiper removal
○	△	○	○	○	—

(Note 1) The above-mentioned surface treatment is LD treatment (coating thickness : 1 to 2  $\mu$ m).  
In case of LD treatment, treatment of end cap is omitted.

(Note 2) For axial clearance adjustment, contact KURODA.

Ball screw specifications

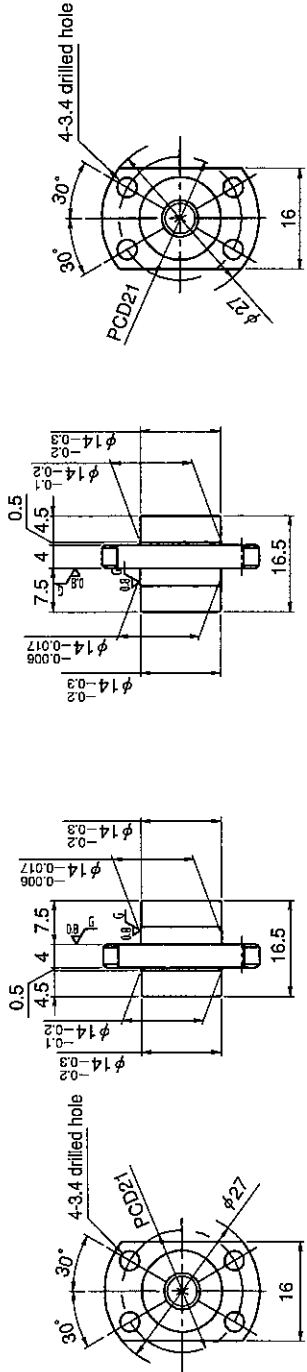
Screw shaft dia.	6	Axial clearance	$\sim 0.010$ (H)
Lead	6	Basic dynamic load rating	760N
Thread direction	Right-hand	Basic static load rating	1140N
Number of circuits	1. Sturm 2 circuit	Spacer ball	—
Ball diameter	1.000	Lubricant	Mullimp PS2
Number of thread	2		

**SHAFT END FINISH ORDERING SHEET**

Screw shaft diameter  $\phi 6$ , Lead 6

(Unit : mm)

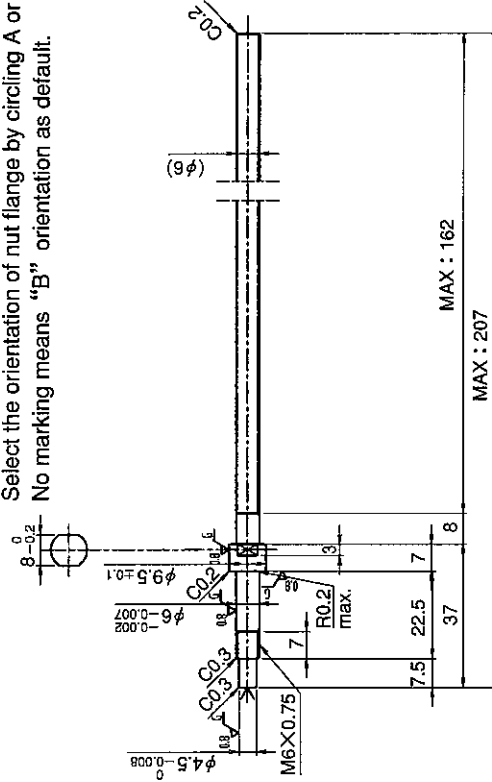
HG0606QS-HEZR-    X    -C5H



**A**

Select the orientation of nut flange by circling A or B.  
No marking means "B" orientation as default.

**B**



Applicable Support Unit

Direct mount : BUK-6 (Fixed end unit) Supported end bearing) Refer to Page.402

Circle flange : BUM-6 (Fixed end unit) Supported end bearing) Refer to Page.409

Company Name	
Telephone	Name of Person in Charge
Company Address	