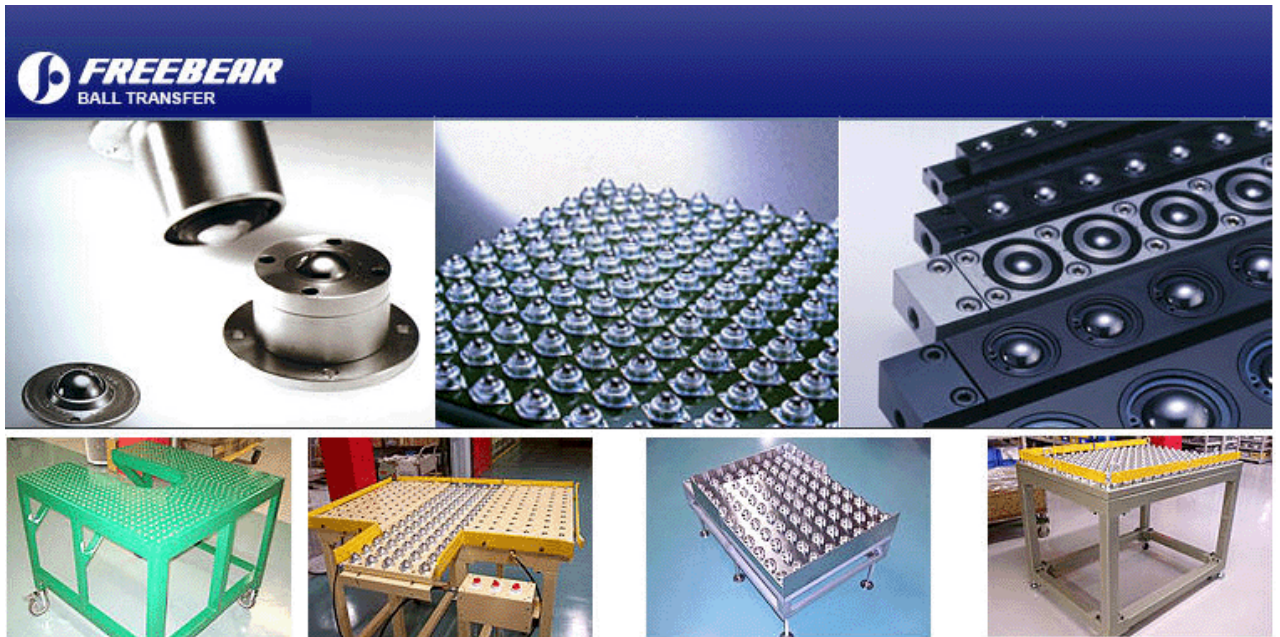


日本 FREEBEAR사 볼트렌스퍼



유일FA시스템

주소:서울 구로구 구로본동 1258 중앙유통단지 라동 7열 2720~1호

전화:02-2683-4825~6

팩스:02-6679-4827

Email: bearing@yuilbearing.com

■ 제품소개 : 볼캐스터 > 일본제품 시리즈

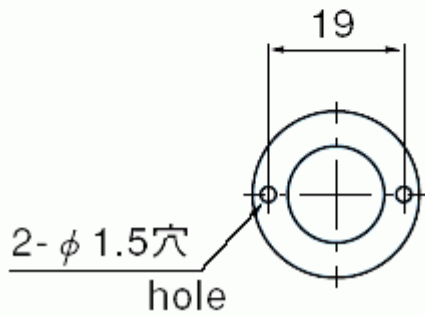
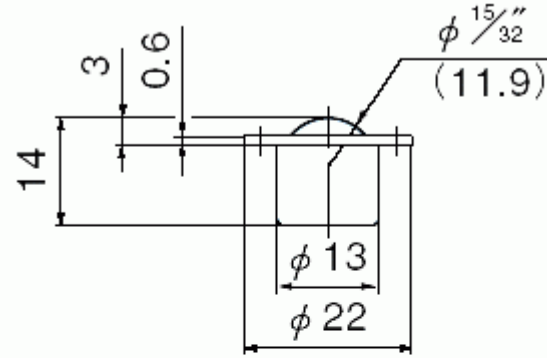
▶ 프레스성형품시리즈 상향용 (Steel)



C-1L

허용 하중 : 2kg

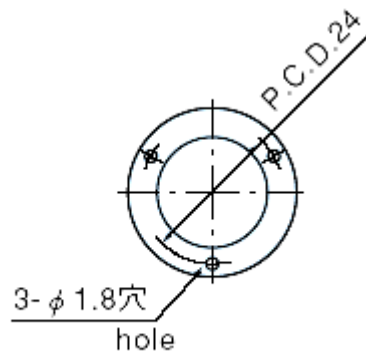
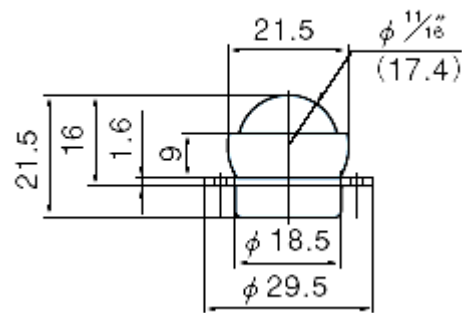
무게 : 10g



C-4F

허용 하중 : 4kg

무게 : 35g

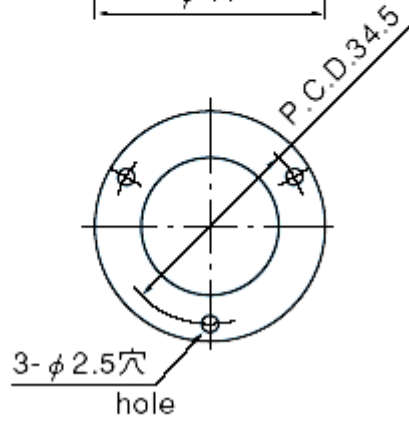
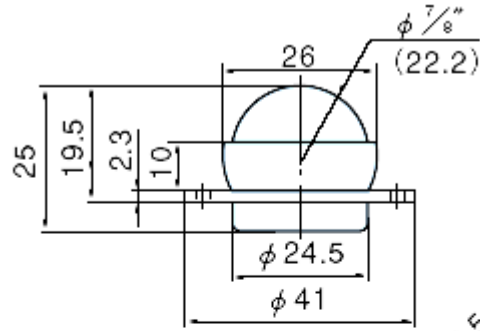




C-5F

허용 하중 : 6kg

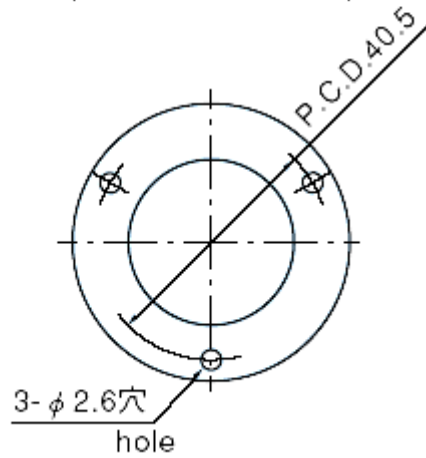
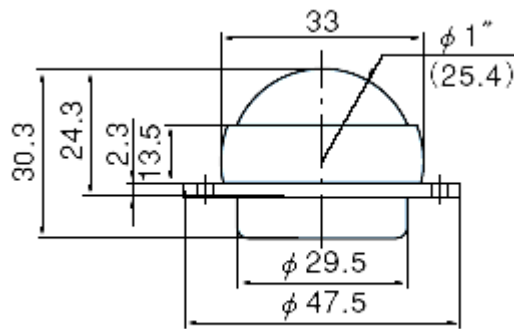
무게 : 80g



C-6F

허용 하중 : 7kg

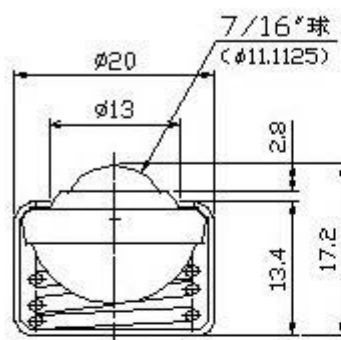
무게 : 110g



C-3S



許容荷重/5kg 自重/20g

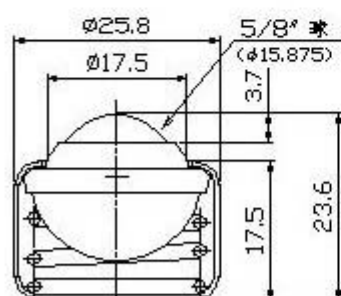


スプリング沈みシロ/1.8mm
 取付強さ/49N(5kgf)
 最大強さ/68N(7kgf)

C-5S



許容荷重/8kg 自重/35g

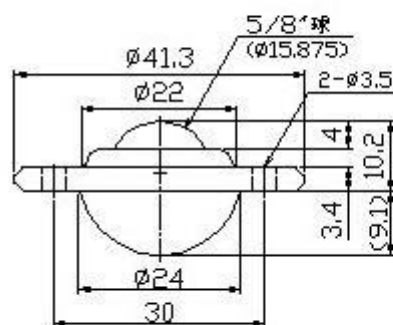


スプリング沈みシロ/2mm
 取付強さ/78N(8kgf)
 最大強さ/107N(11kgf)

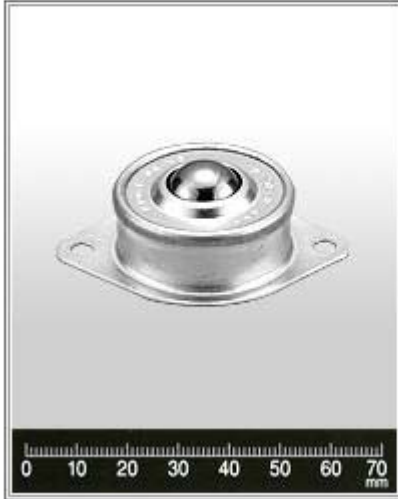
C-5L



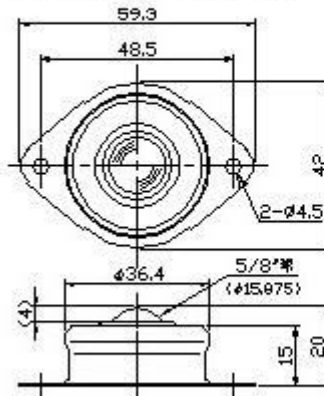
許容荷重/8kg 自重/45g



C-5L-5



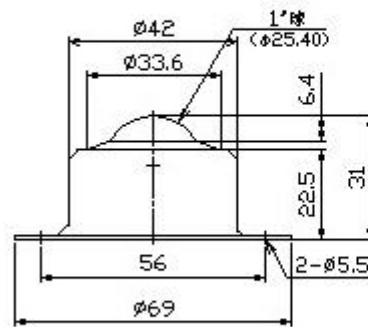
허용하중 / 8kg 自重 / 50g



C-8R



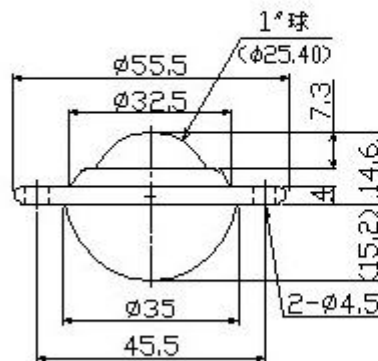
許容荷重 / 30kg 自重 / 150g



C-8L



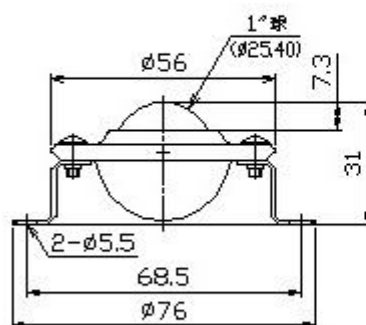
許容荷重 / 30kg 自重 / 132g



C-8L-5(C-8L取付)



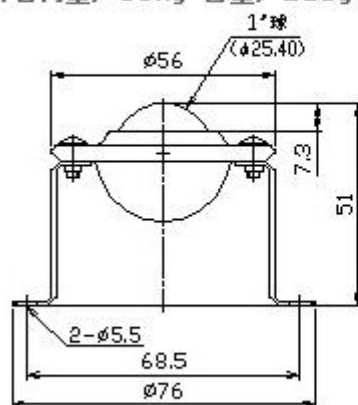
許容荷重/30kg 自重/185g



C-8L-6(C-8L取付)



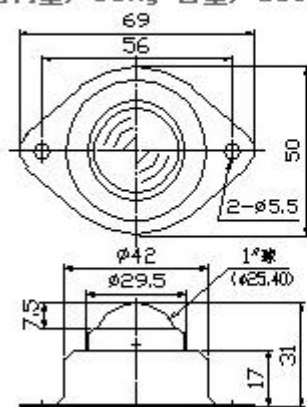
許容荷重/30kg 自重/210g



C-8Y



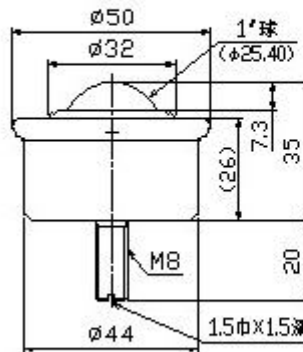
許容荷重/30kg 自重/139g



C-8B



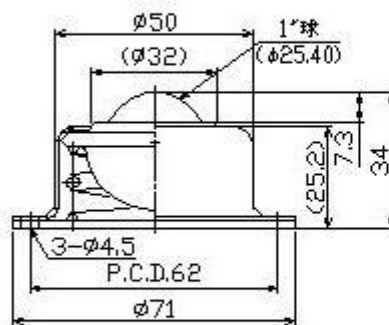
許容荷重 / 30kg 自重 / 165g



C-8S



허용하중 / 30kg 自重 / 235g

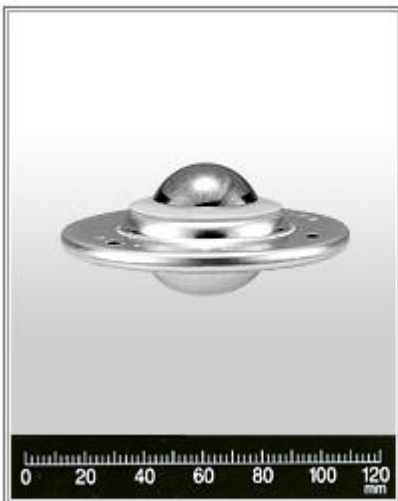


스프링 범위 / 2.5mm

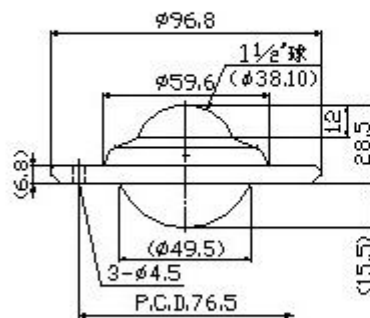
설치강도 / 196N(20kgf)

최대강도 / 294N(30kgf)

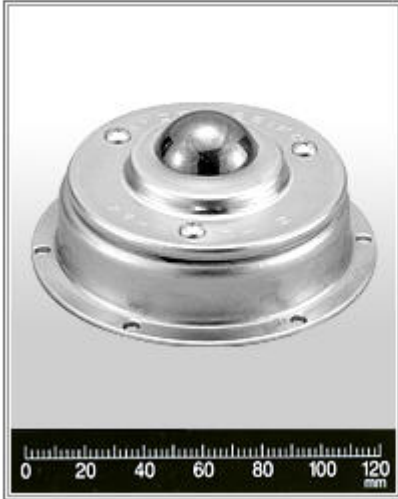
C-12



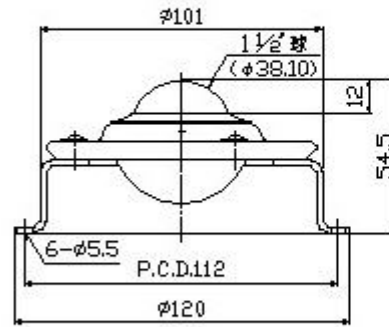
許容荷重 / 60kg 自重 / 505g



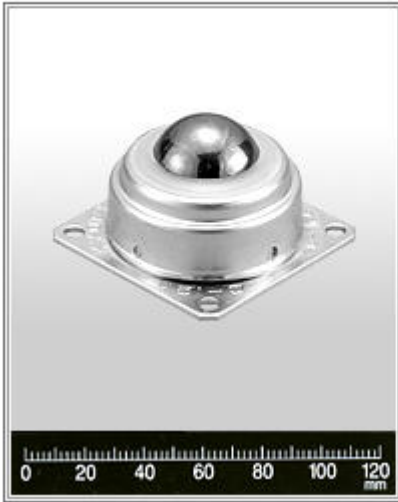
C-12L-5(C-12取付)



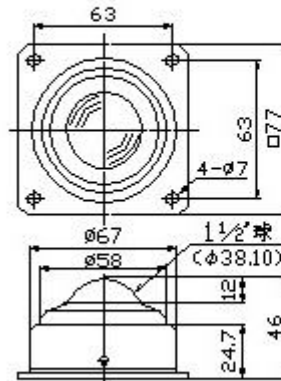
許容荷重/60kg 自重/705g



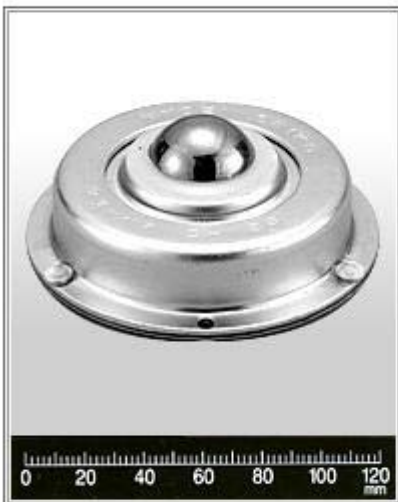
C-12K



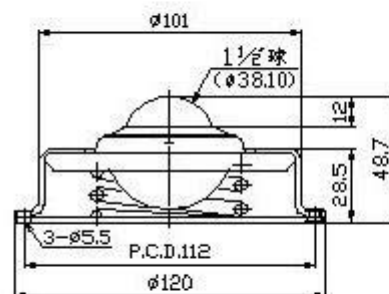
許容荷重/60kg 自重/495g



C-12S(C-12組込)



허용하중/60kg 自重/975g

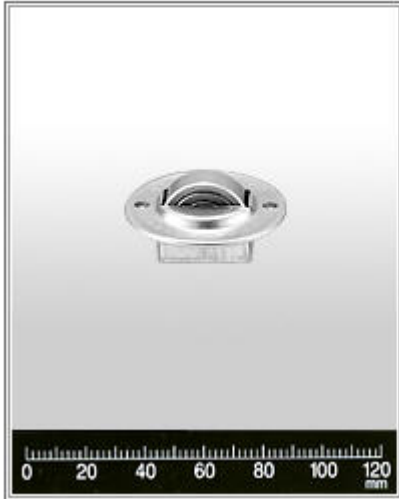


스프링 범위/2mm

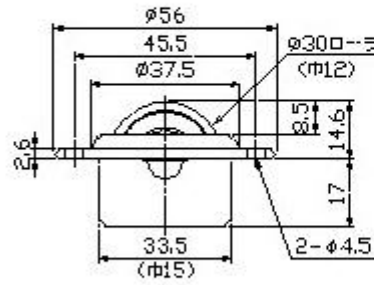
설치강도/490N(50kgf)

최대강도/588N(60kgf)

F-30



許容荷重 / 30kg 自重 / 90g

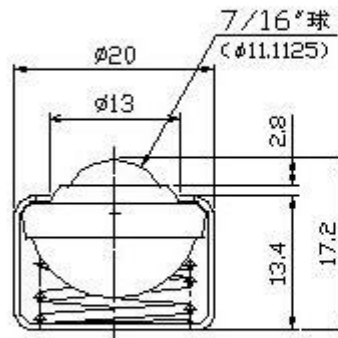


▶ 프레스성형품시리즈-상향용 (수지재:POM)

P-3S



허용하중 / 1kg 自重 / 10g

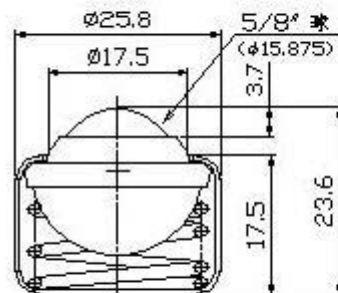


스프링 범위 / 1.8mm
설치강도 / 9.8N(1kgf)
최대강도 / 14.7N(1.5kgf)

P-5S



허용하중 / 2kg 自重 / 25g

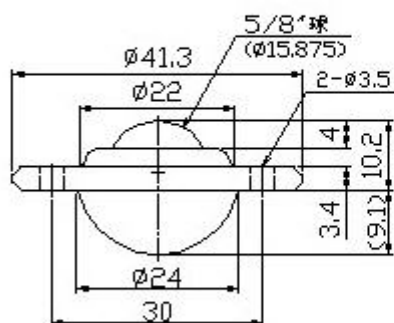


스프링 범위 / 2mm
설치강도 / 19.6N(2kgf)
최대강도 / 34.3N(3.5kgf)

P-5L



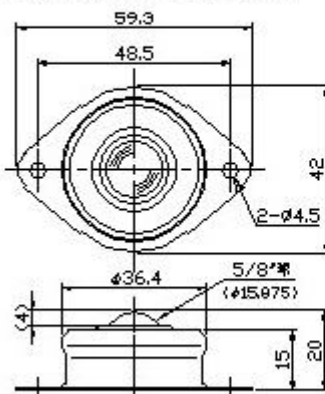
許容荷重/2kg 自重/30g



P-5L-5



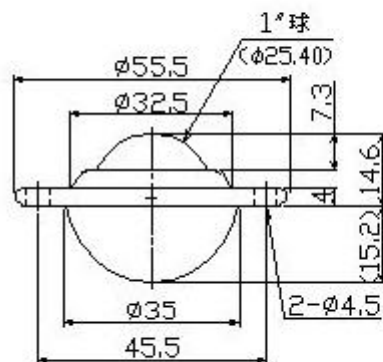
許容荷重/2kg 自重/35g



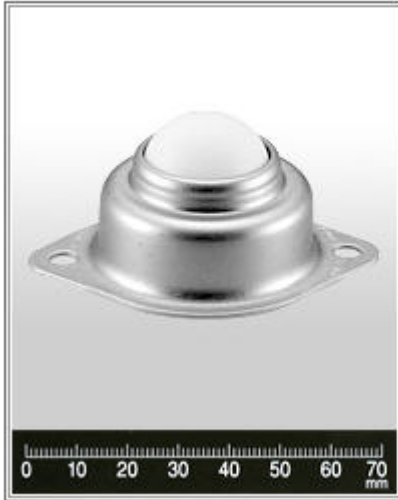
P-8L



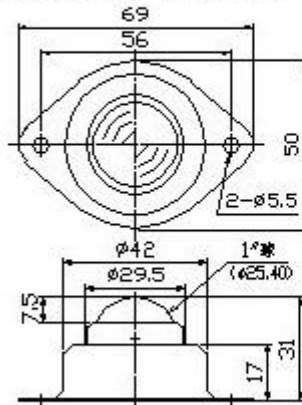
許容荷重/5kg 自重/75g



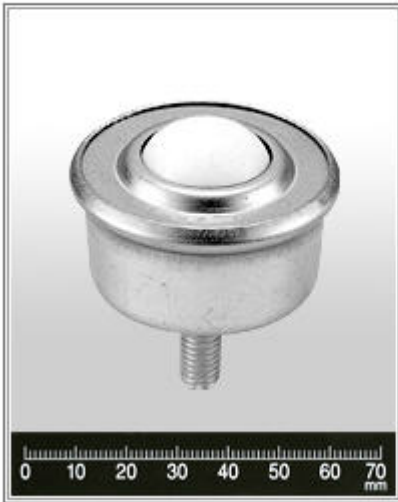
P-8Y



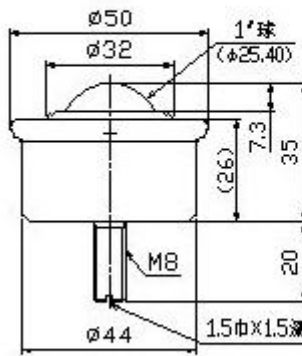
許容荷重/5kg 自重/80g



P-8B



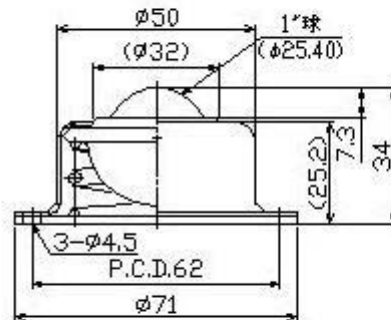
許容荷重/5kg 自重/105g



P-8S



허용하중 /5kg 自重 /160g



스프링 범위 /2.5mm

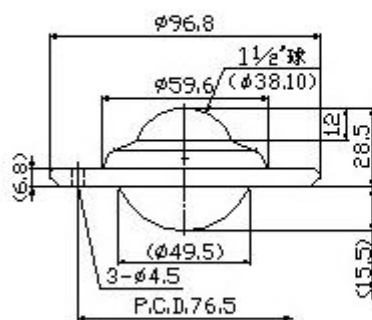
설치강도 /49N(5kgf)

최대강도 /58.8N(6kgf)

P-12



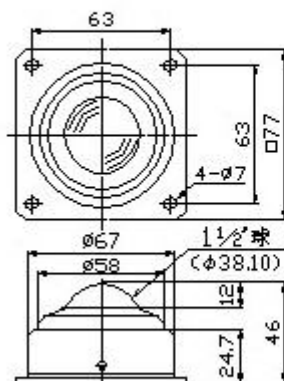
許容荷重/10kg 自重/315g



P-12K



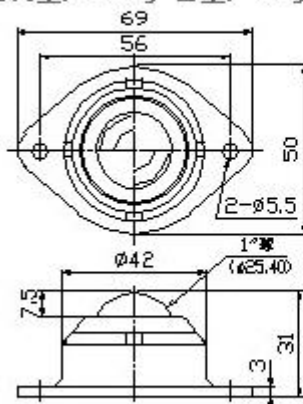
許容荷重/10kg 自重/305g



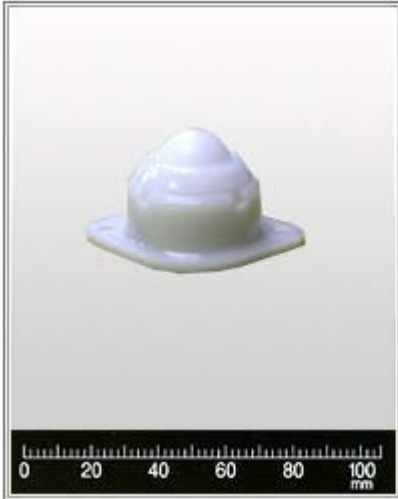
J-8Y-BK



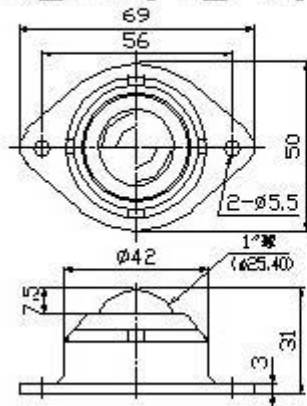
許容荷重/10kg 自重/40g



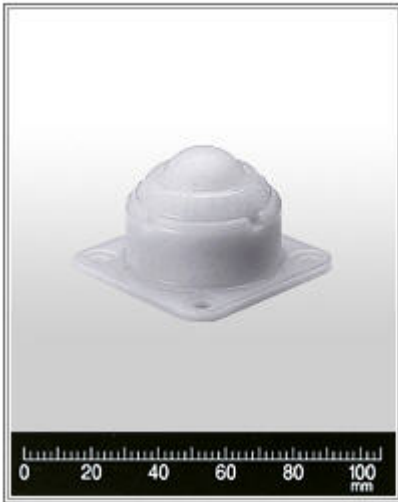
J-8Y-WH



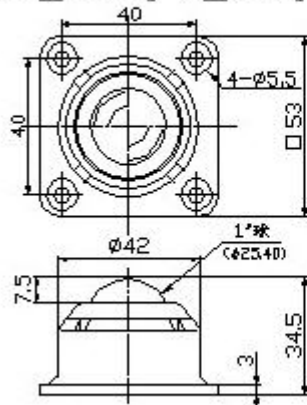
許容荷重/10kg 自重/40g



J-8K



許容荷重/10kg 自重/42g

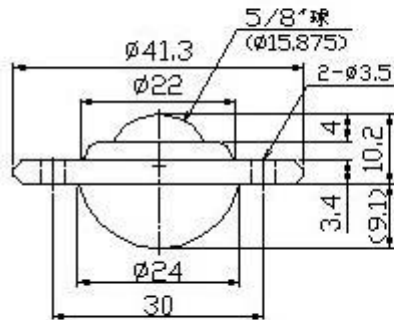


▶ 프레스성형품시리즈-상향용 (스테인레스제:Stainless)

S-5L



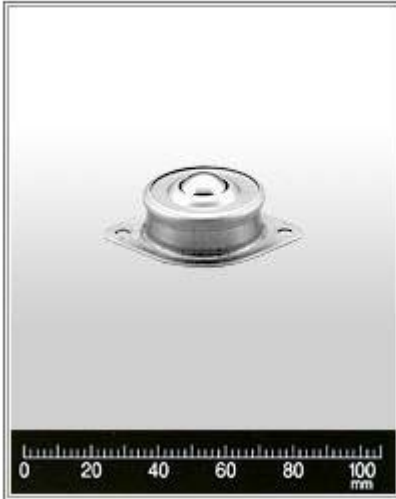
許容荷重/8kg 自重/45g



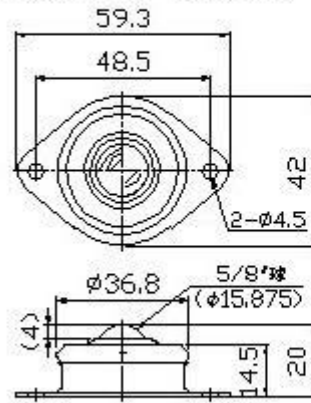
材質/SUS440C

本体, 캡/SUS304

S-5L-5



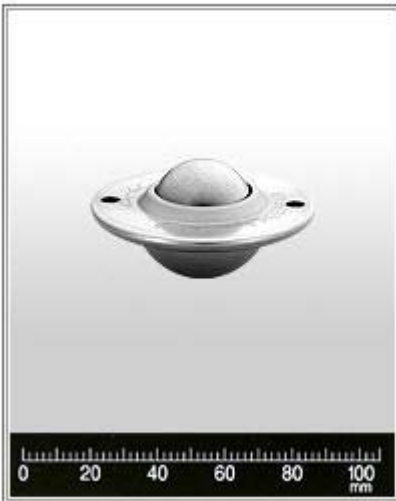
許容荷重/8kg 自重/55g



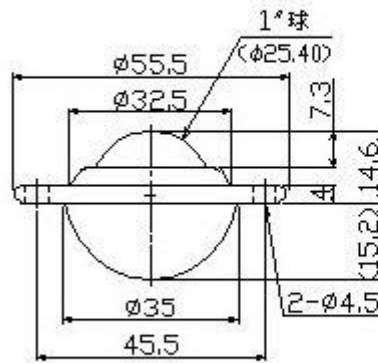
材質/SUS440C

本体/SUS304

S-8L



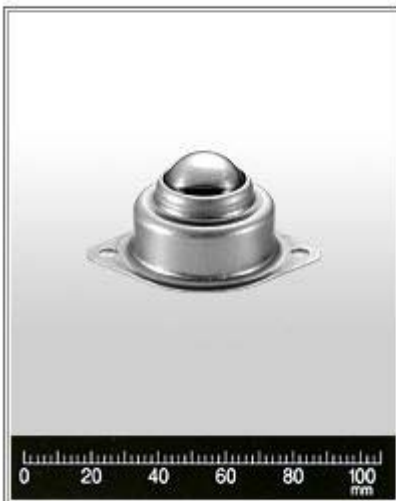
許容荷重/30kg 自重/130g



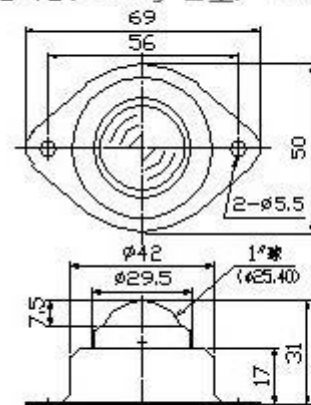
材質/SUS440C

本体/SUS304

S-8Y



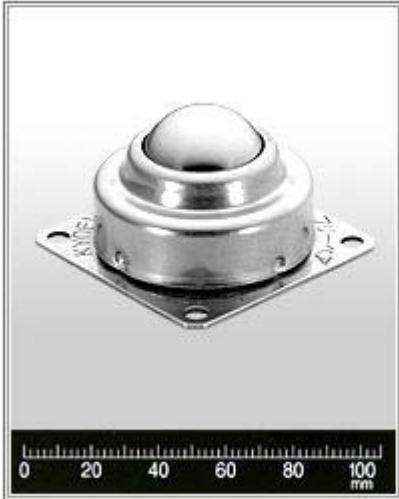
허용하중/30kg 自重/139g



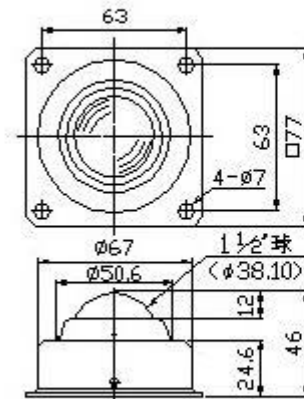
材質/SUS440C

本体, 캡/SUS304

S-12K



許容荷重/60kg 自重/480g



皿/SUS440C

蓋/SUS304

本体/SUS420J2

볼트랜스퍼 적용사례

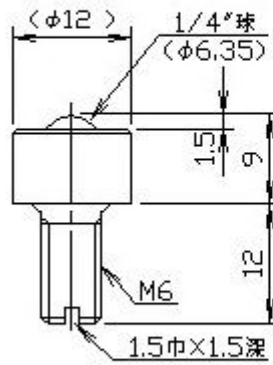


▶ 철삭가공품 시리즈-Steel (상향용)

C-2H



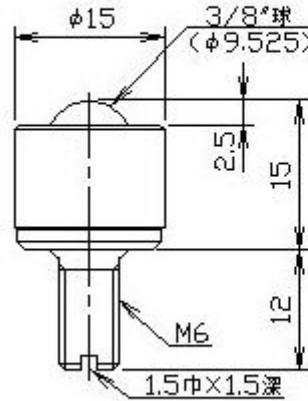
許容荷重/5kg 自重/10g



C-3H



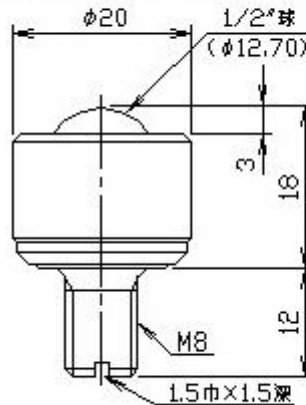
許容荷重/8kg 自重/18g



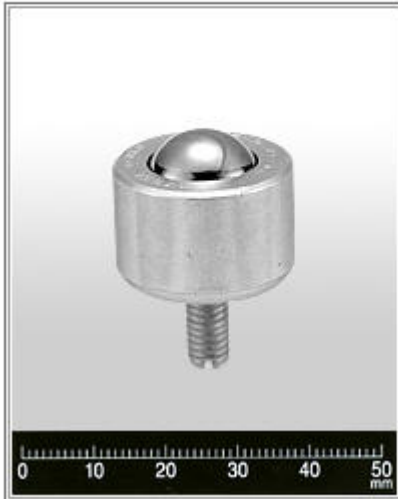
C-4H



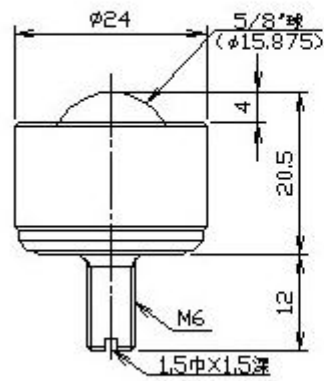
許容荷重/10kg 自重/36g



C-5H



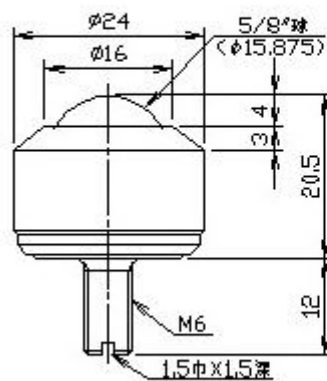
許容荷重/20kg 自重/56g



C-5HT



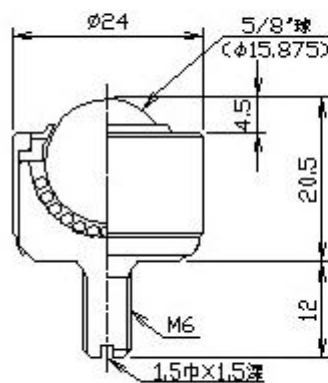
許容荷重/20kg 自重/50g



C-5HR(ゴムシール付)



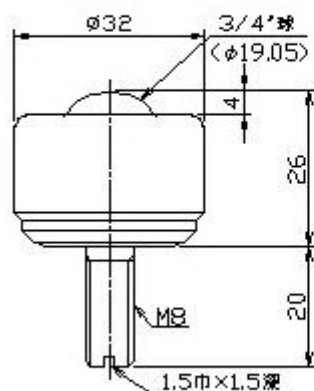
許容荷重/20kg 自重/55g



C-6H



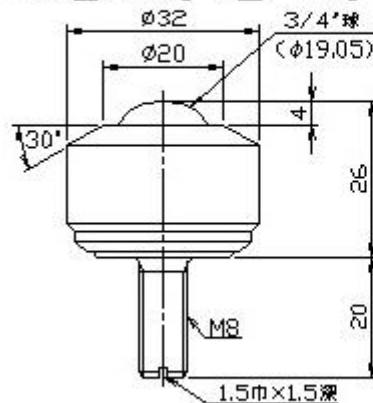
許容荷重/50kg 自重/130g



C-6HT



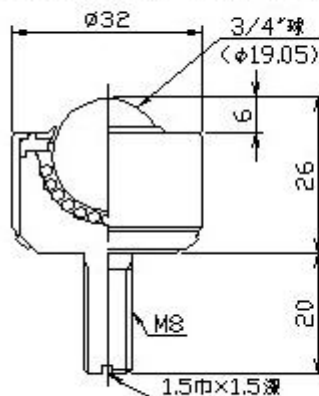
許容荷重/50kg 自重/120g



C-6HR(ゴムシール付)



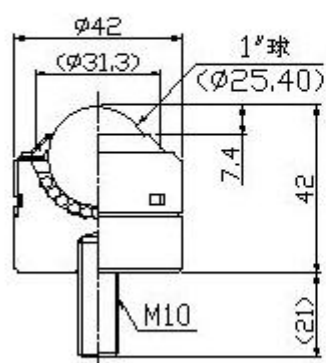
許容荷重/50kg 自重/125g



C-8H



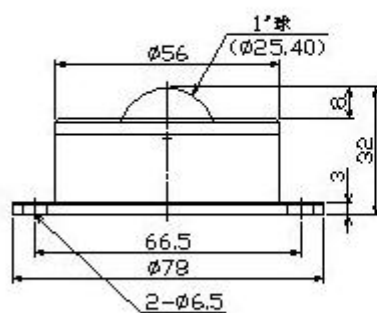
許容荷重/80kg 自重/336g



C-8HA



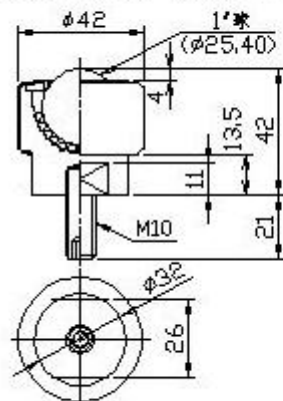
許容荷重/80kg 自重/498g



C-8HB



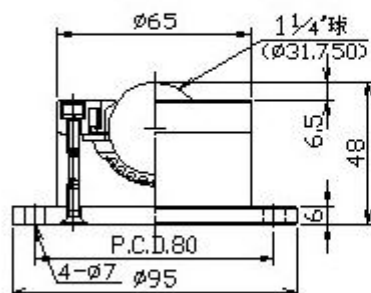
許容荷重/100kg 自重/310g



C-10H(メタルシール付)



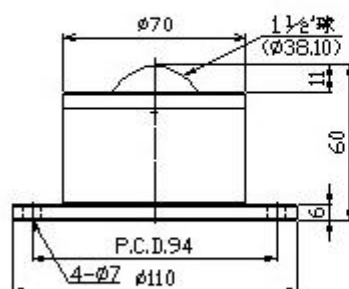
許容荷重/150kg 自重/1,400g



C-12H



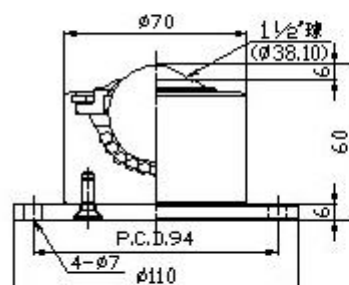
許容荷重/200kg 自重/1,670g



C-12HR(ゴムシール付)



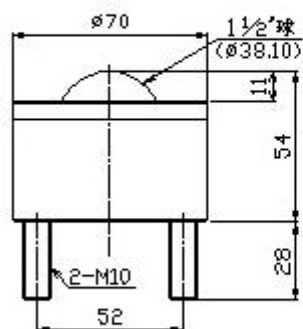
許容荷重/200kg 自重/1,660g



C-12HA



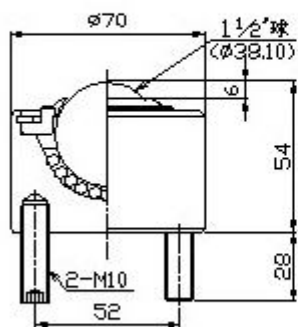
許容荷重/200kg 自重/1,270g



C-12HAR(ゴムシール付)



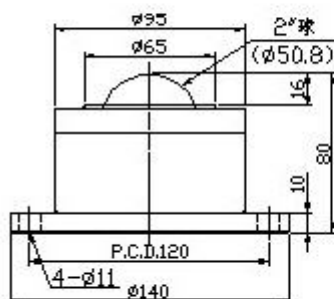
許容荷重/200kg 自重/1,250g



C-16H



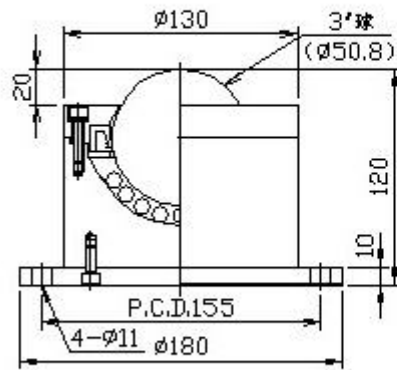
許容荷重/300kg 自重/4,080g



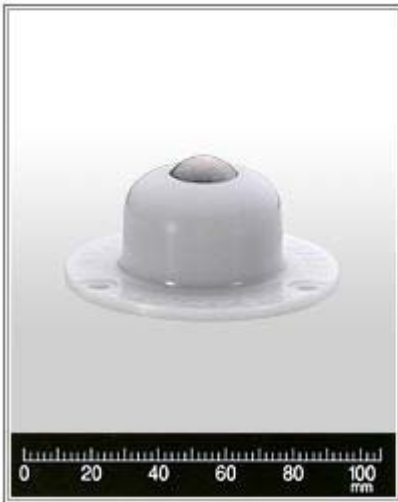
C-24H



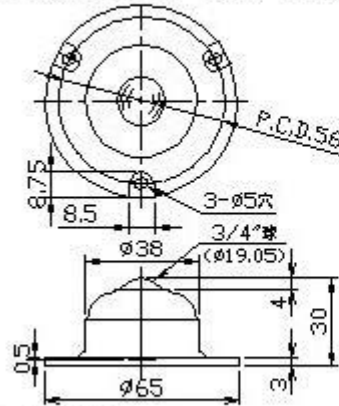
許容荷重 / 500kg 自重 / 10,810g



C-6HJ



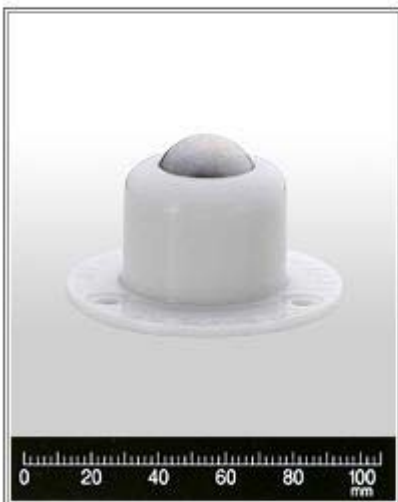
許容荷重 / 50kg 自重 / 130g



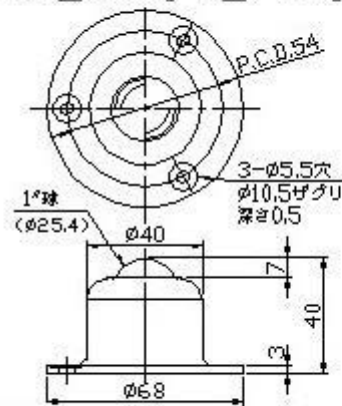
材質 / SUJ2

成型 / ポリアセタル

C-8HJ



許容荷重 / 80kg 自重 / 230g

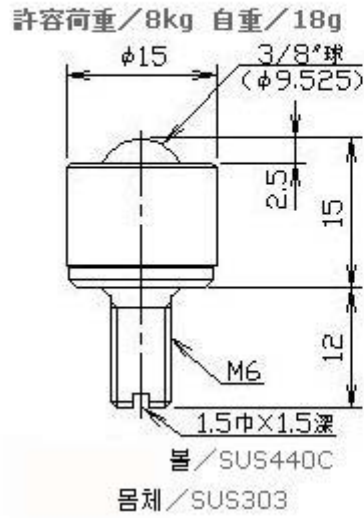


材質 / SUJ2

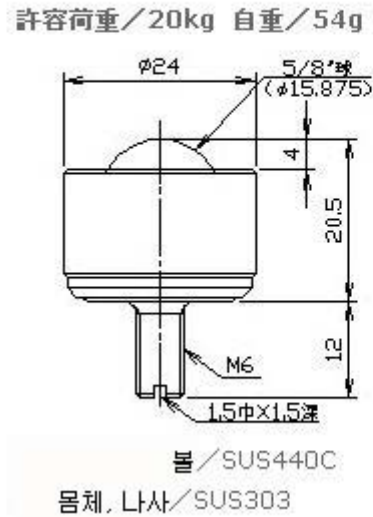
成型 / ポリアセタル

▶ 절삭가공품 시리즈-스테인레스제 (Stainless) (상향용)

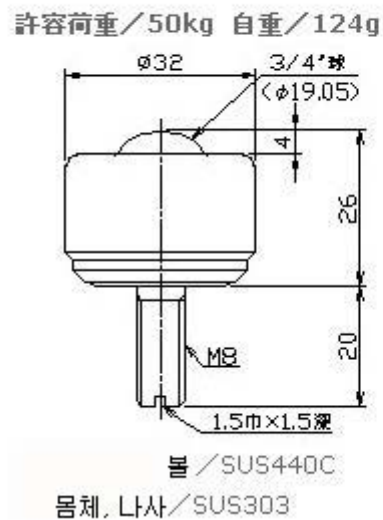
S-3H



S-5H



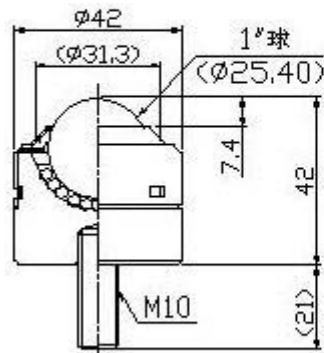
S-6H



S-8H



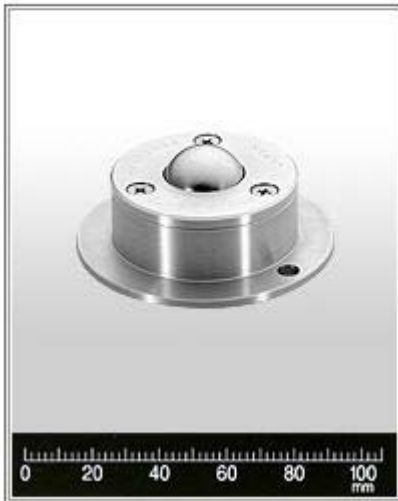
許容荷重/80kg 自重/330g



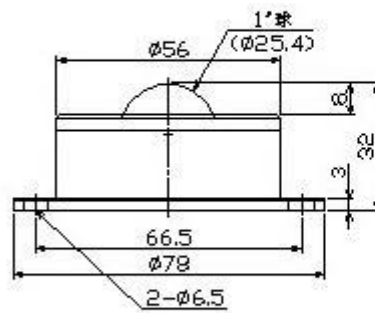
ボール/SUS440C

本体、ナサブ/SUS304

S-8HA



許容荷重/80kg 自重/498g



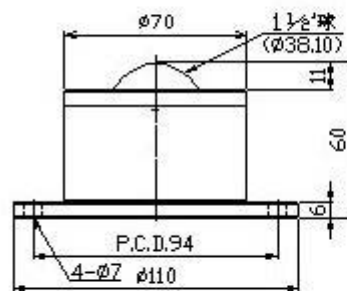
ボール/SUS440C

本体/SUS303

S-12H



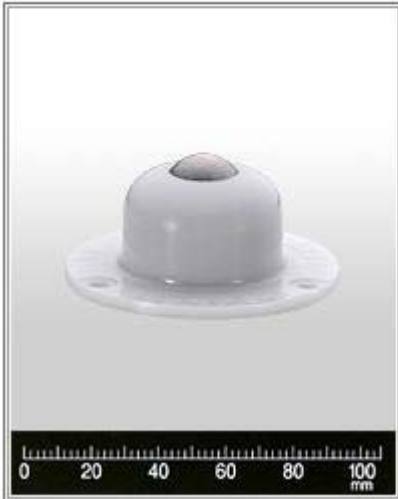
許容荷重/200kg 自重/1,660g



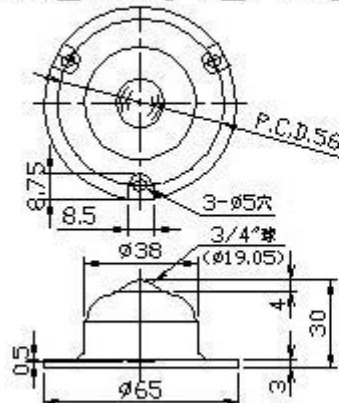
ボール/SUS440C

本体/SUS303

S-6HJ

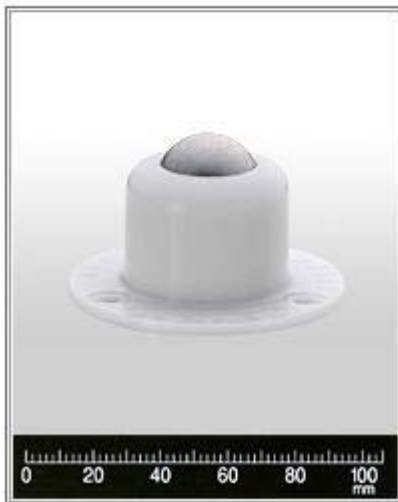


許容荷重 / 50kg 自重 / 130g

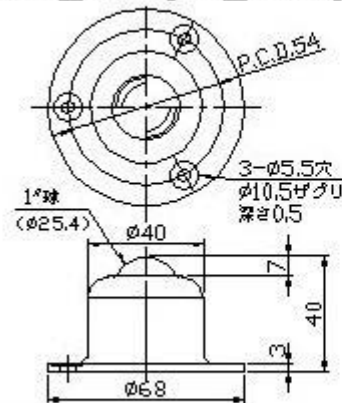


材 / SUS440C
 몸체 / 폴리아세탈

S-8HJ



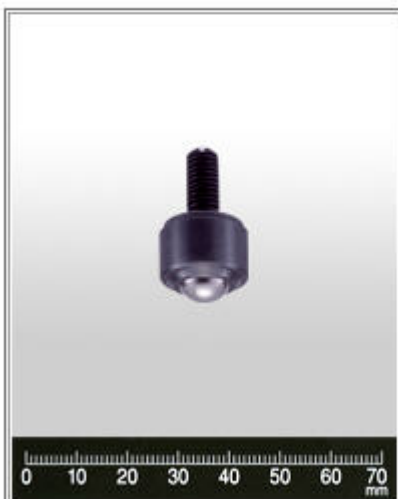
許容荷重 / 80kg 自重 / 230g



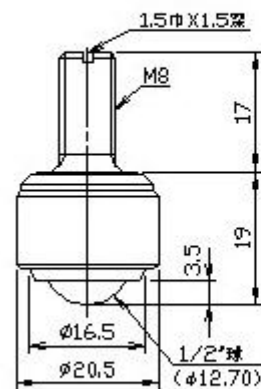
材 / SUS440C
 몸체 / 폴리아세탈

▶ 절삭가공품시리즈 Steel- (하향용)

C-4D



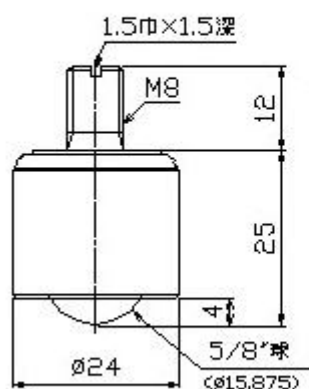
許容荷重 10kg 自重 35g



C-5D



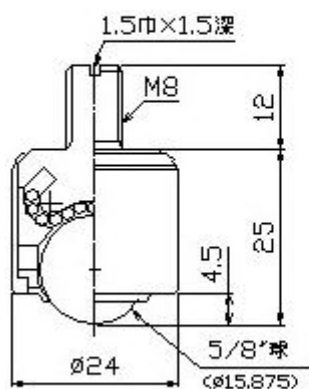
許容荷重 20kg 自重70g



C-5DR(ゴムシール付)



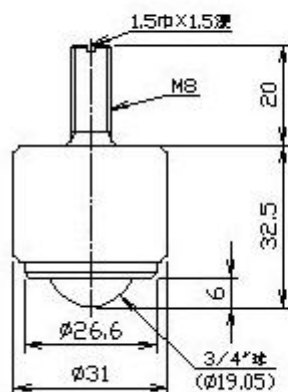
許容荷重 20kg 自重70g



C-6D



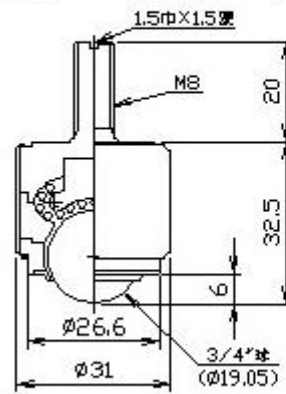
許容荷重 50kg 自重145g



C-6DR(ゴムシール付)



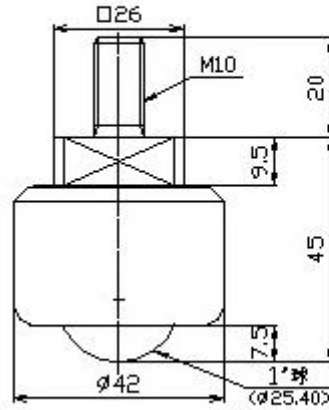
許容荷重 50kg 自重145g



C-8D



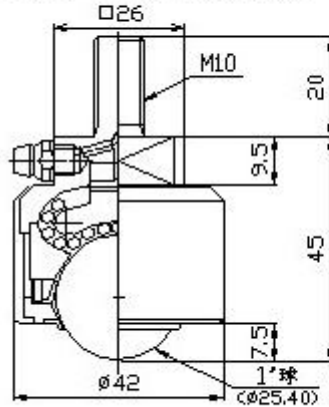
許容荷重 80kg 自重325g



C-8DA(ゴムシール付)



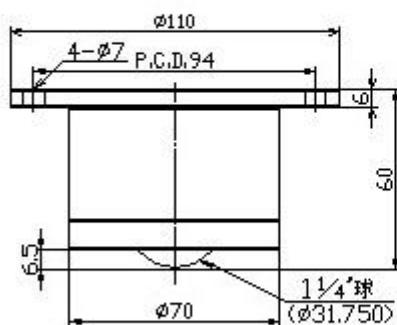
許容荷重 80kg 自重308g



C-10D(メタルシール付)



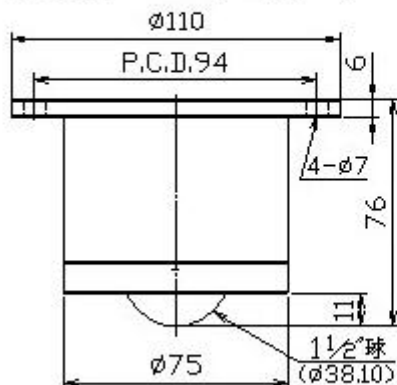
許容荷重/150kg 自重/1,800g



C-12D



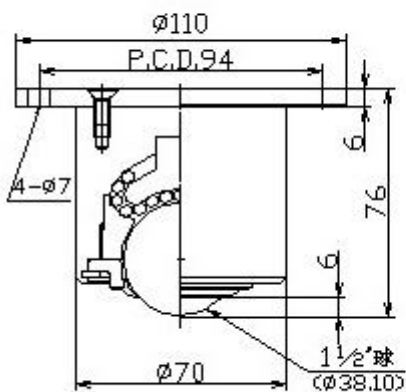
許容荷重/200kg 自重/2,360g



C-12DR(ゴムシール付)



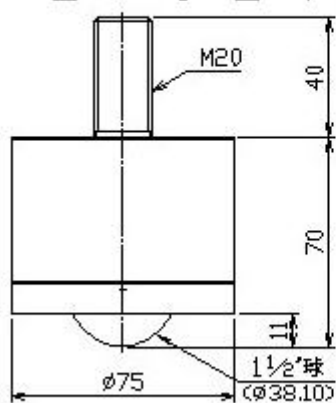
許容荷重/200kg 自重/2,080g



C-12HD



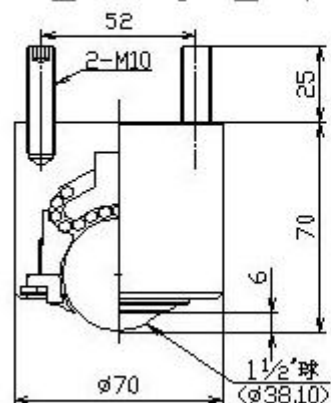
許容荷重/200kg 自重/2,030g



C-12HDR(ゴムシール付)



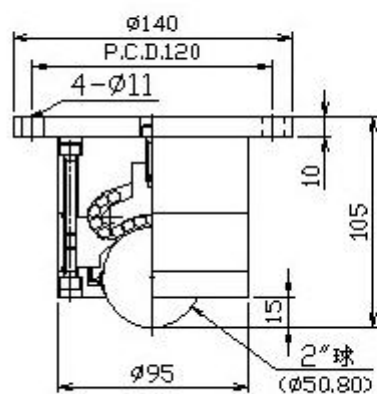
許容荷重/200kg 自重/1,670g



C-16D



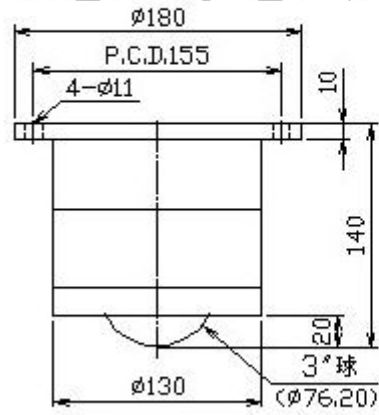
許容荷重/300kg 自重/5,350g



C-24D



許容荷重/500kg 自重/12,500g

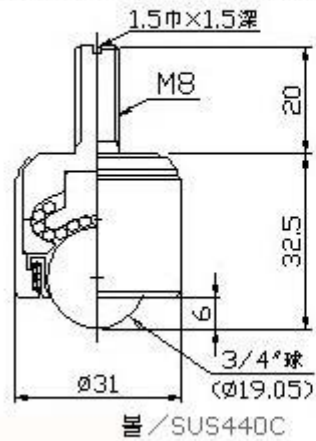


▶ 절삭가공품시리즈 Stainless- (하향용)

S-6D(메탈시ール付)



許容荷重/50kg 自重/145g

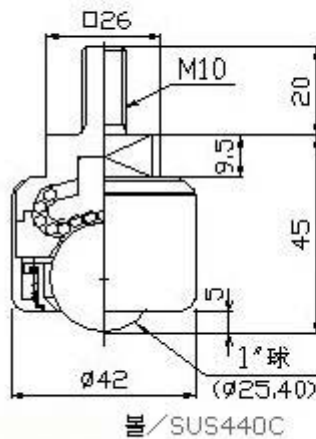


材質, 볼트/SUS303

S-8D(메탈시ール付)



許容荷重/80kg 自重/325g



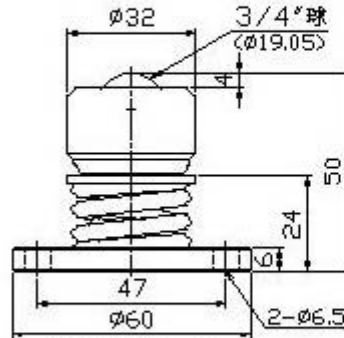
材質, 볼트/SUS303

▶ 스프링쿠션타입- (상향용)

C-6Z(C-6H組込)



許容荷重/50kg 自重/304g



스프링 범위/2mm

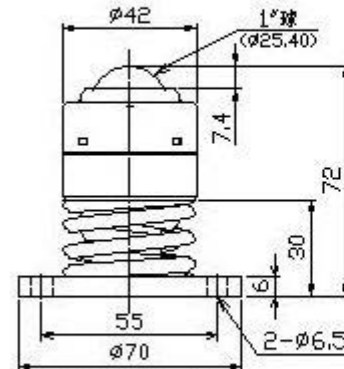
설치강도/490N(50kgf)

최대강도/686N(70kgf)

C-8Z(C-8H組込)



許容荷重/80kg 自重/642g

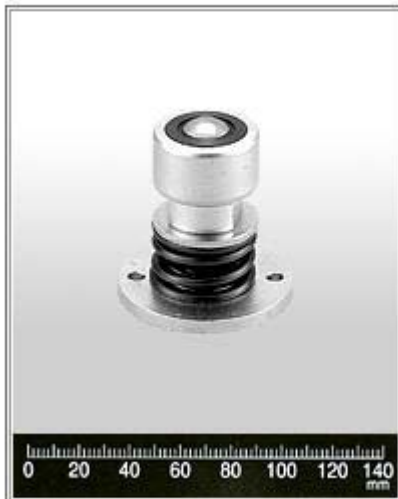


스프링 범위/2mm

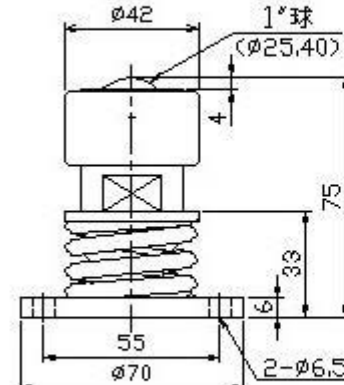
설치강도/784N(80kgf)

최대강도/1,029N(105kgf)

C-8ZB(C-8HB ゴムシール付 組込)



許容荷重/100kg 自重/644g



스프링 범위/2mm

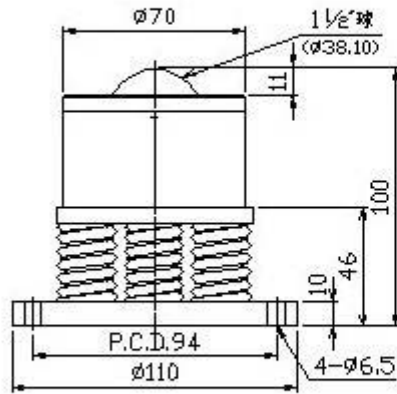
설치강도/980N(100kgf)

최대강도/1,274N(130kgf)

C-12Z(C-12HA組込)



許容荷重/200kg 自重/2,440g

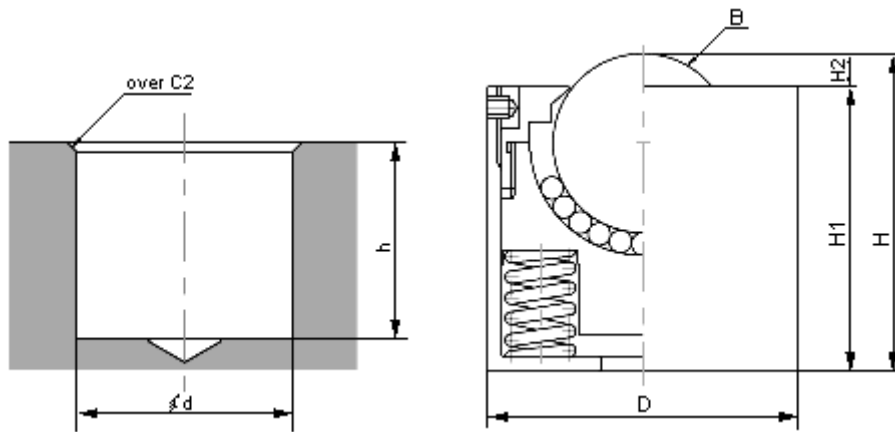


스프링 범위/2mm

설치강도/1,961N(200kgf)

최대강도/2,548N(260kgf)

上向用 C-5HS , C-8HS



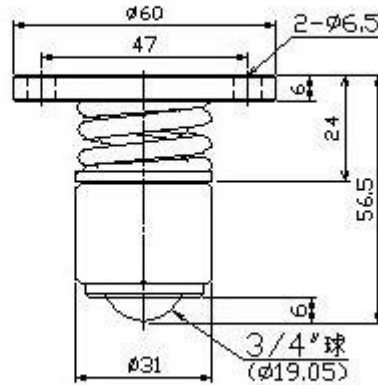
Model	Hole dimensions for mounting (mm)		Dimensions (mm)					weight (kg)	Load test data(average) KN(kgf)			
	d	h	H	H1	H2	D	B		Amount of lowering			
									0.5mm	1.0mm	1.5mm	2.0mm
C-5HS	+0.1 Ø30 -0	29	31	28	3	Ø30	5/8" (Ø15.875)	115	0.23(24)	0.25(26)	0.27(28)	0.29(30)
C-6HS	+0.1 Ø38 -0	36	38	35		Ø38	3/4" (Ø19.05)	230	0.58(60)	0.63(65)	0.68(70)	0.73(75)
C-8HS	+0.1 Ø44 -0	43	45	40.3	4.7	Ø44	1" (Ø25.4)	345	1.17(120)	1.37(140)	1.56(160)	1.76(180)
C-8HS-200	+0.1 Ø60 +0.5	58	60	55	5	Ø60		800	2.35(240)	2.54(260)	2.74(280)	2.94(300)

▶ 스프링쿠션타입- (하향용)

C-6DZ(C-6D組込)



許容荷重/50kg 自重/322g



스프링 범위/2mm

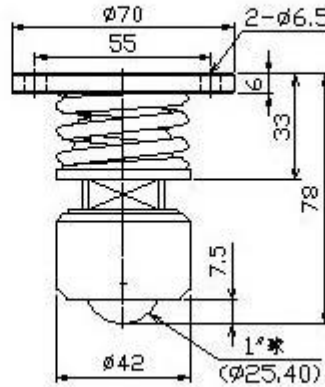
설치강도/490N(50kgf)

최대강도/686N(70kgf)

C-8DZ(C-8D組込)



許容荷重/80kg 自重/660g



스프링 범위/2mm

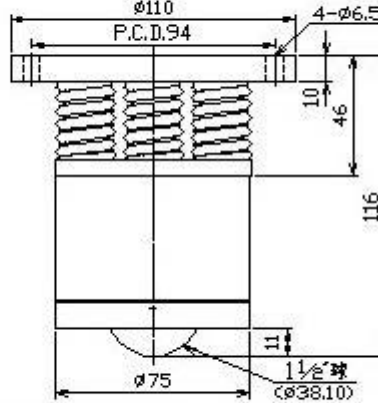
설치강도/784N(80kgf)

최대강도/1,029N(105kgf)

C-12DZ(C-12D組込)



許容荷重/200kg 自重/3,130g

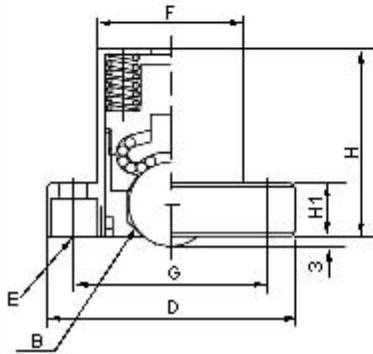
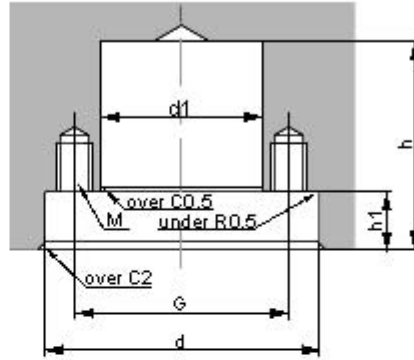


스프링 범위/2mm

설치강도/1,961N(200kgf)

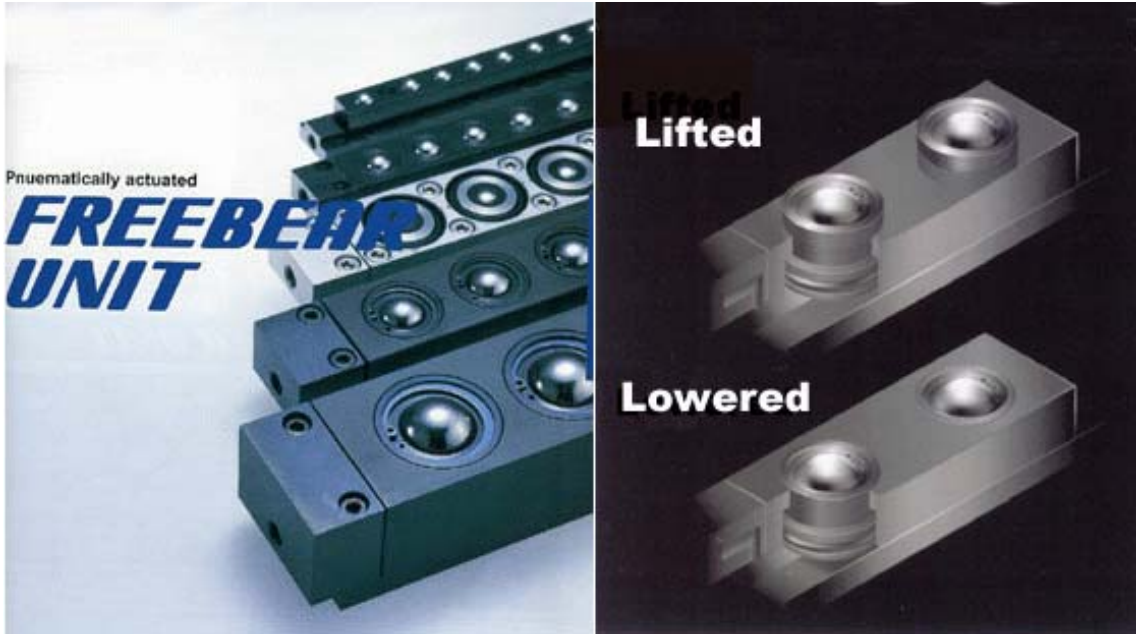
최대강도/2,548N(260kgf)

下向用 C-6DS, C-8DS



Model	Hole dimensions for mounting(mm)					Dimensions (mm)							weight (kg)	Load test data(average) KN(kgf)			
	d	d1	h	h1	M	H	H1	D	E	F	G	B		Amount of lowering			
														0.5mm	1.0mm	1.5mm	2.0mm
C-6DS	Ø61 ^{+0.1} ₋₀	Ø38 ^{+0.1} _{+0.5}	46	14 ^{+0.1} _{-0.1}	M6	47.5	13	60	2-Ø6.5 Ø11 (spot facing) 8(depth)	38	48	3/4" (19.05)	470	0.58 (60)	0.63 (65)	0.68 (70)	0.73 (75)
C-8DS	Ø76 ^{+0.1} ₋₀	Ø44 ^{+0.1} _{+0.5}	58.5	17 ^{+0.1} _{-0.1}	M8	60	16	75	2-Ø9 Ø14 (spot facing) 11(depth)	44	59	1" (25.4)	825	1.17 (120)	1.37 (140)	1.56 (160)	1.76 (180)

▶ AIR Ball Transfer Unit



프리베어유니트는 20~30KG의 에어압으로 1톤의 중량물을 모든 방향의 원하는 위치로 손쉽게 신속히 이송시킬 수 있습니다.

원하는 위치에 중량물의 이동이 용이하다.

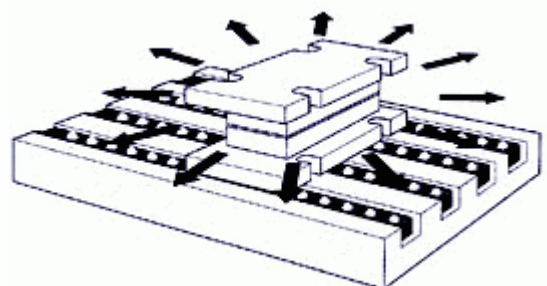
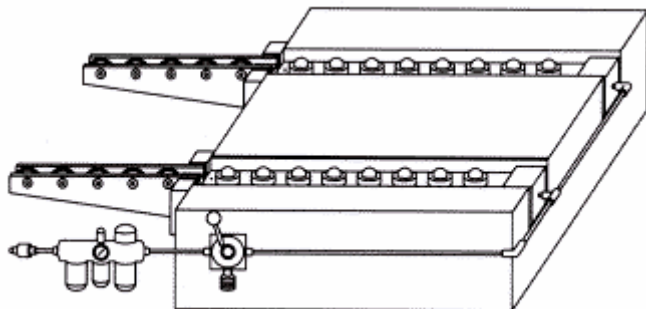
에어밸브의 ON, OFF 조작만으로 프리베이스 업 에어의 힘으로 반송물을 리프트업. jig, 금형의 반송이나 정확한 위치 결정이 근소한 힘으로 간단하면서 신속히 행할 수 있습니다. 조립작업 라인에서나 프레스 금형 반송 및 세팅등에 위력을 발휘합니다

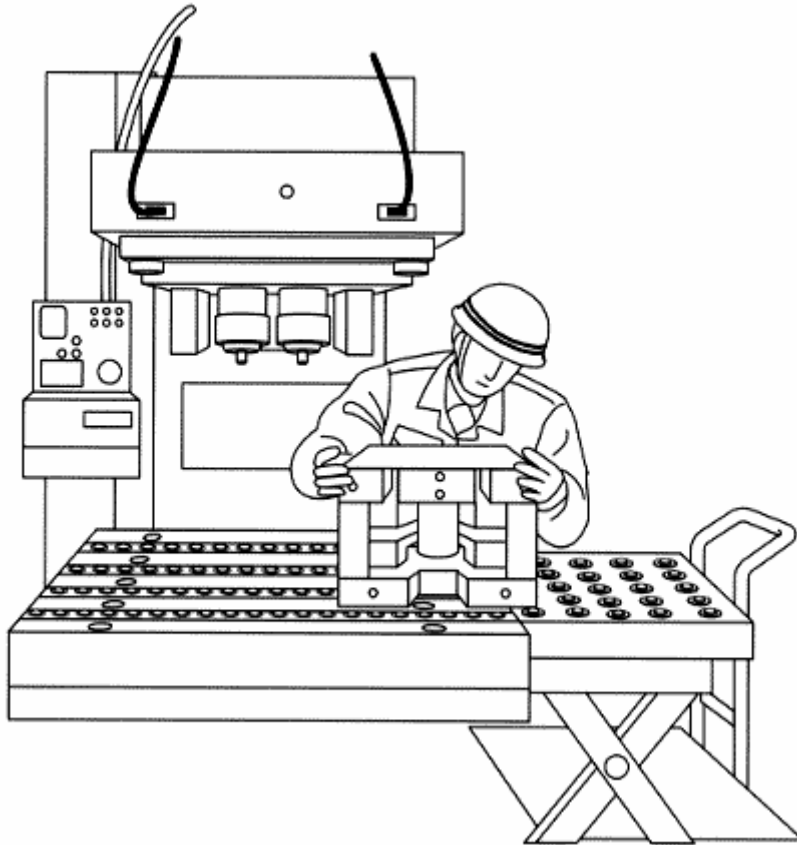
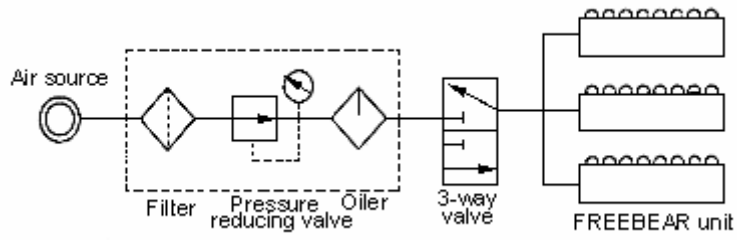
취급하기 쉽고, 저비용화를 실현

에어부상식 프리 베이스 업 유니트는 종래의 유압식 리프터와 비교되고, 도입시에 전문적 지식이나 고가인 배관 기기를 필요로 하지 않고, 대규모적인 공사도 불필요합니다. 또, 만일 문제가 발생해도 저비용으로 수리가 가능합니다. 다양한 설치성으로, 프레스 기계뿐만 아니라 공작 기계나 측정기에도 용이하게 활용하실 수 있습니다.

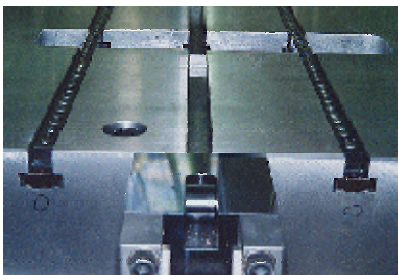
유니트에 공기를 공급하게되면, 내장한 프리 베이스 업이 부상하고, 반송물을 들어올립니다. 시동 마찰 저항(μ)3/100 이하의 힘으로 반송물을 360°자유롭게 이동시키는 것이 가능해집니다

배관은 동관, 강관, 수지 튜브등이 사용할 수 있습니다만, 분리의 필요가 있는 경우는 배관에 여유를 갖게 한 플렉시블 (flexible) 인 것을 사용해 주십시오. 또, 하강시에 잔압을 빼기 위해 조작 밸브는 3방향구 이상의 밸브를 사용하십시오

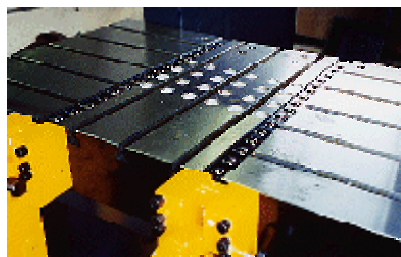




에어 유니트 적용사례



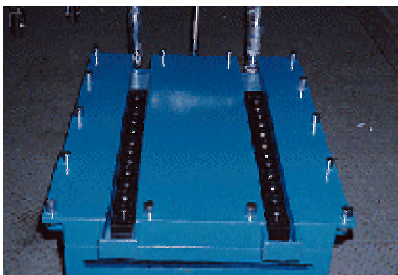
T-slot model



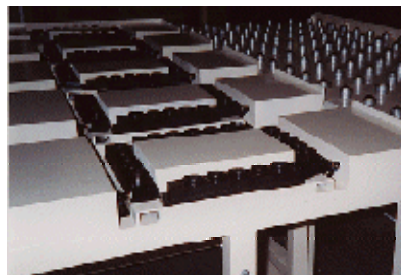
Square-slot model



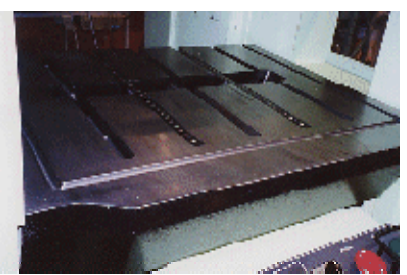
For fork lift-pallet



Ball Transfer Unit built-in cart with lifter

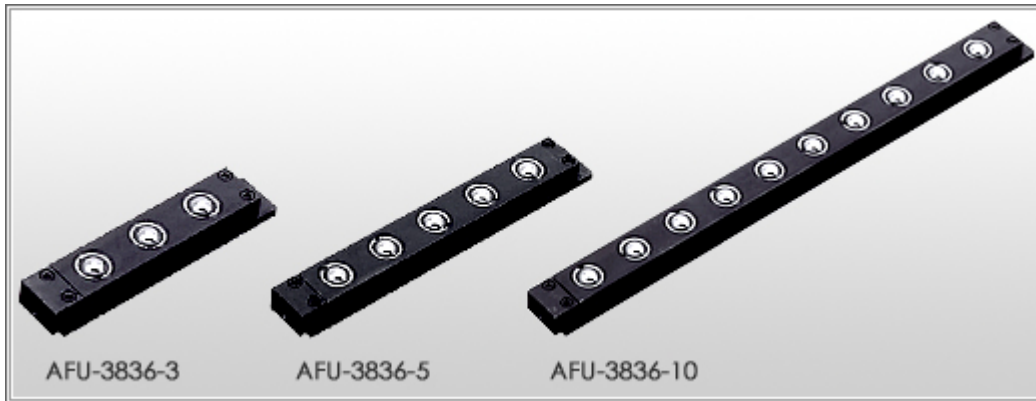


For a preparation table

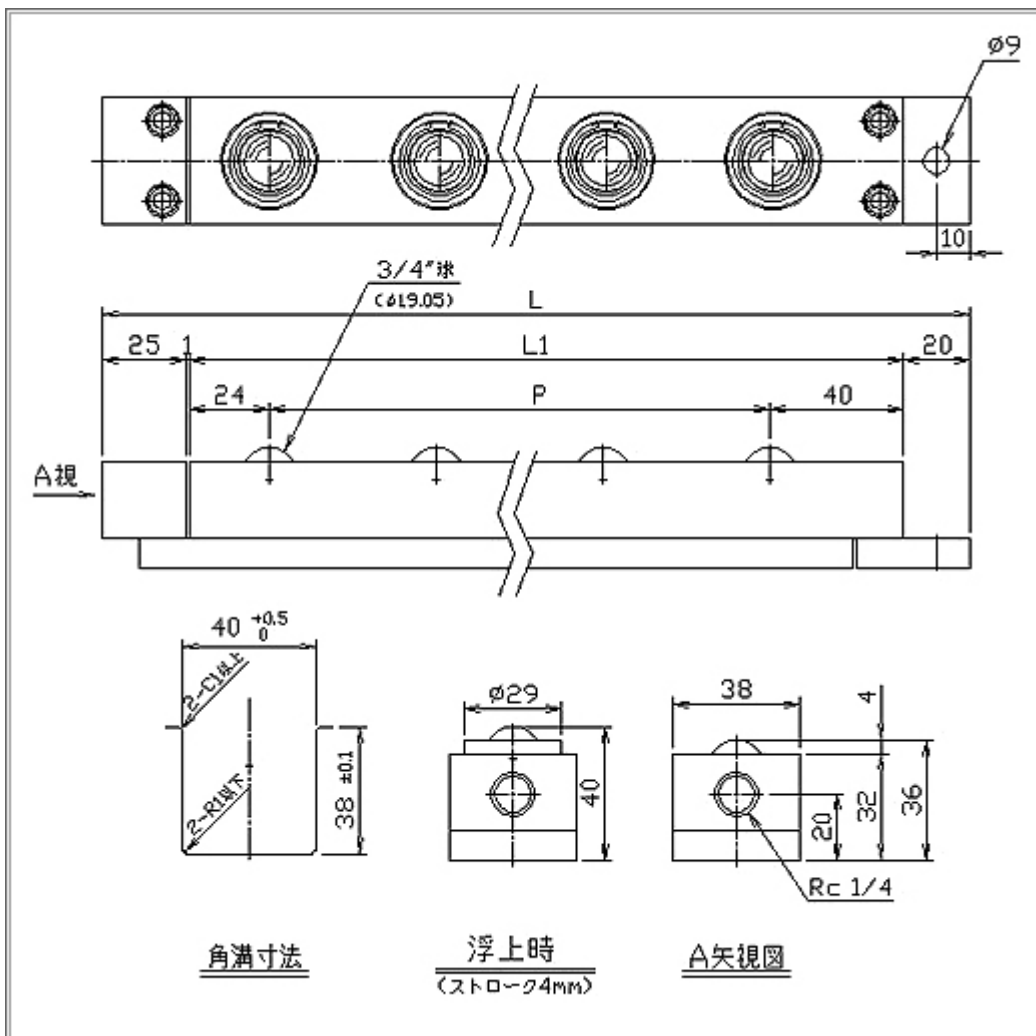


For bolster

▶ AIR Ball Transfer Unit 3836 Series

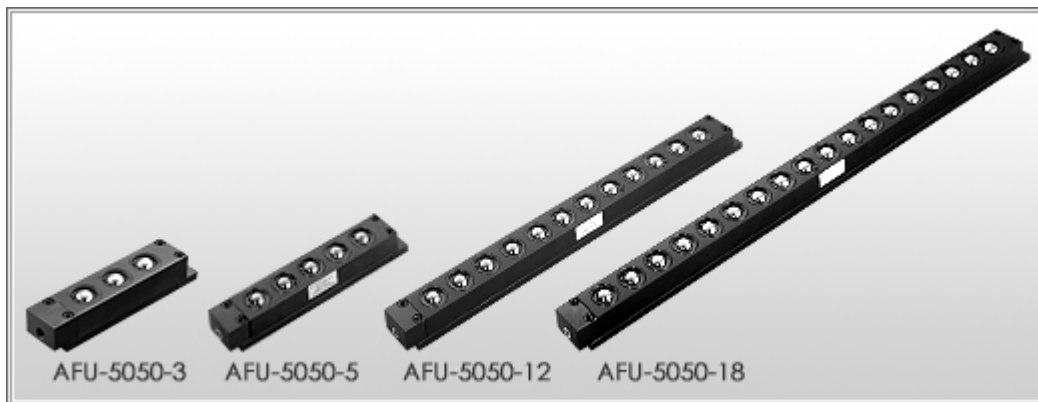


폭 : 38mm 높이 : 36mm(부상 시40mm)
 Stroke) 4mm 부하 능력 : 32~569kgf
 ※사용 공기 압0.5MPa 5.1kgf/cm²)

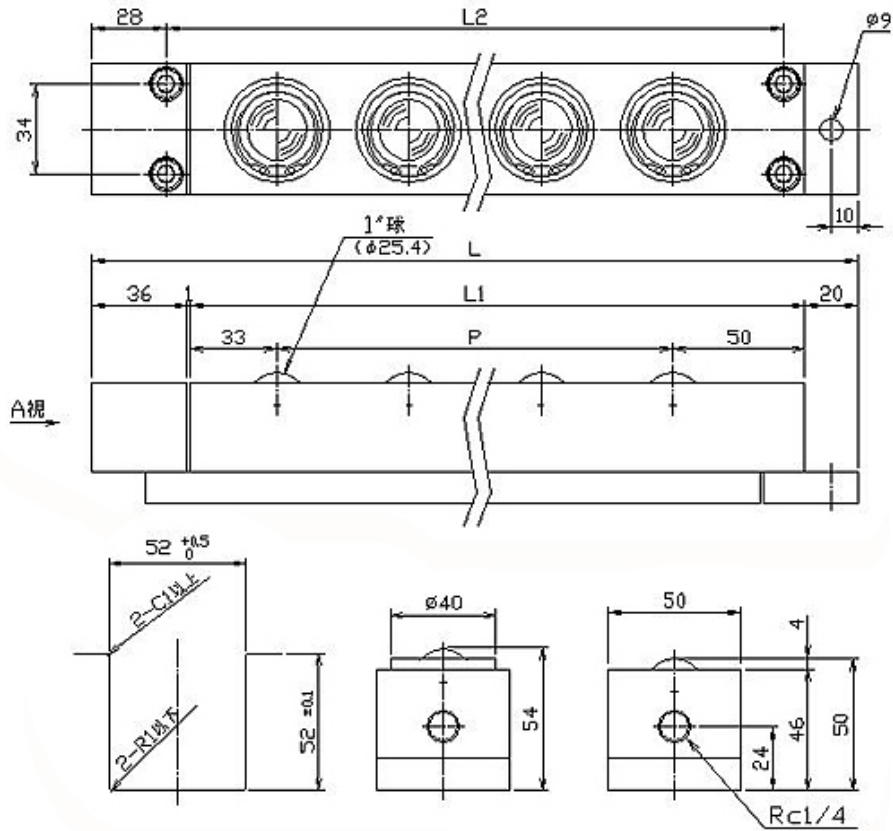


Model	Dimensions (mm)			weight (kg)	공기압과 부하능력과의 관계 (kgf)					
	L	L1	P		프리 베이스 업 1 개			AFU1 개		
					사용공기압 MPa (kgf/cm ²)			사용 공기압 MPa (kgf/cm ²)		
					0.40(4.1)	0.50(5.1)	0.60(6.1)	0.40(4.1)	0.50(5.1)	0.60(6.1)
AFU-3836-1	110	64	---	0.24 (24.5)	0.31 (31.6)	0.39 (39.8)	0.24(24.5)	0.31(31.6)	0.39(39.8)	
AFU-3836-2	160	114	1×P50=50				0.48(48.9)	0.62(63.2)	0.78(79.5)	
AFU-3836-3	210	164	2×P50=100				0.72(73.4)	0.93(94.8)	1.17(119.3)	
AFU-3836-4	260	214	3×P50=150				0.96(97.9)	1.24(126.4)	1.56(159.1)	
AFU-3836-5	310	264	4×P50=200				1.20(122.4)	1.55(158.1)	1.95(198.8)	
AFU-3836-6	360	314	5×P50=250				1.44(146.8)	1.86(189.7)	2.34(238.6)	
AFU-3836-7	410	364	6×P50=300				1.68(171.3)	2.17(221.3)	2.73(278.4)	
AFU-3836-8	460	414	7×P50=350				1.92(195.8)	2.48(252.9)	3.12(318.2)	
AFU-3836-9	510	464	8×P50=400				2.16(220.3)	2.79(284.5)	3.51(357.9)	
AFU-3836-10	560	514	9×P50=450				2.40(244.7)	3.10(316.1)	3.90(397.7)	
AFU-3836-11	610	564	10×P50=500				2.64(269.2)	3.41(347.7)	4.29(437.5)	
AFU-3836-12	660	614	11×P50=550				2.88(293.7)	3.72(379.3)	4.68(477.2)	
AFU-3836-13	710	664	12×P50=600				3.12(318.2)	4.03(411.0)	5.07(517.0)	
AFU-3836-14	760	714	13×P50=650				3.36(342.6)	4.34(442.6)	5.46(556.8)	
AFU-3836-15	810	764	14×P50=700				3.60(367.1)	4.65(474.2)	5.85(596.5)	
AFU-3836-16	860	814	15×P50=750				3.84(391.6)	4.96(505.8)	6.24(636.3)	
AFU-3836-17	910	864	16×P50=800				4.08(416.0)	5.27(537.4)	6.63(676.1)	
AFU-3836-18	960	914	17×P50=850				4.32(440.5)	5.58(569.0)	7.02(715.8)	

▶ AIR Ball Transfer Unit 5050 Series

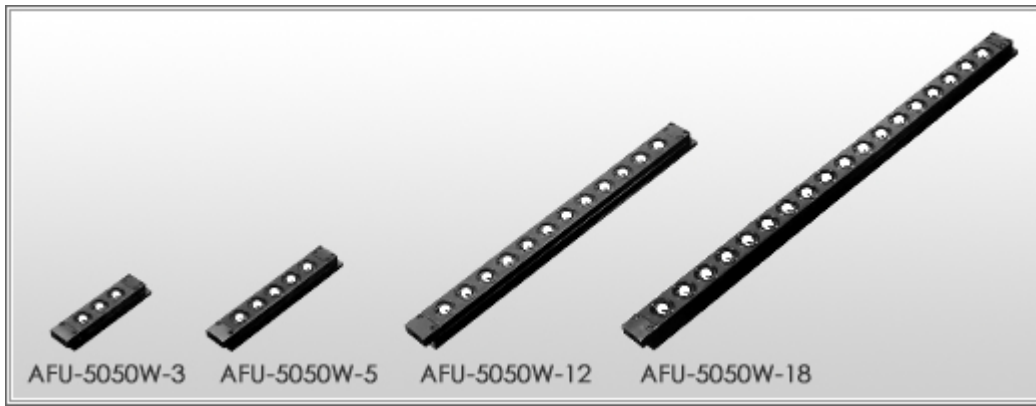


폭 : 50mm 높이 : 50mm (부상시54mm)
 Stroke 4mm 부하 능력 : 65~1175kgf
 ※사용 공기 압0.5MPa (5.1kgf/cm²)

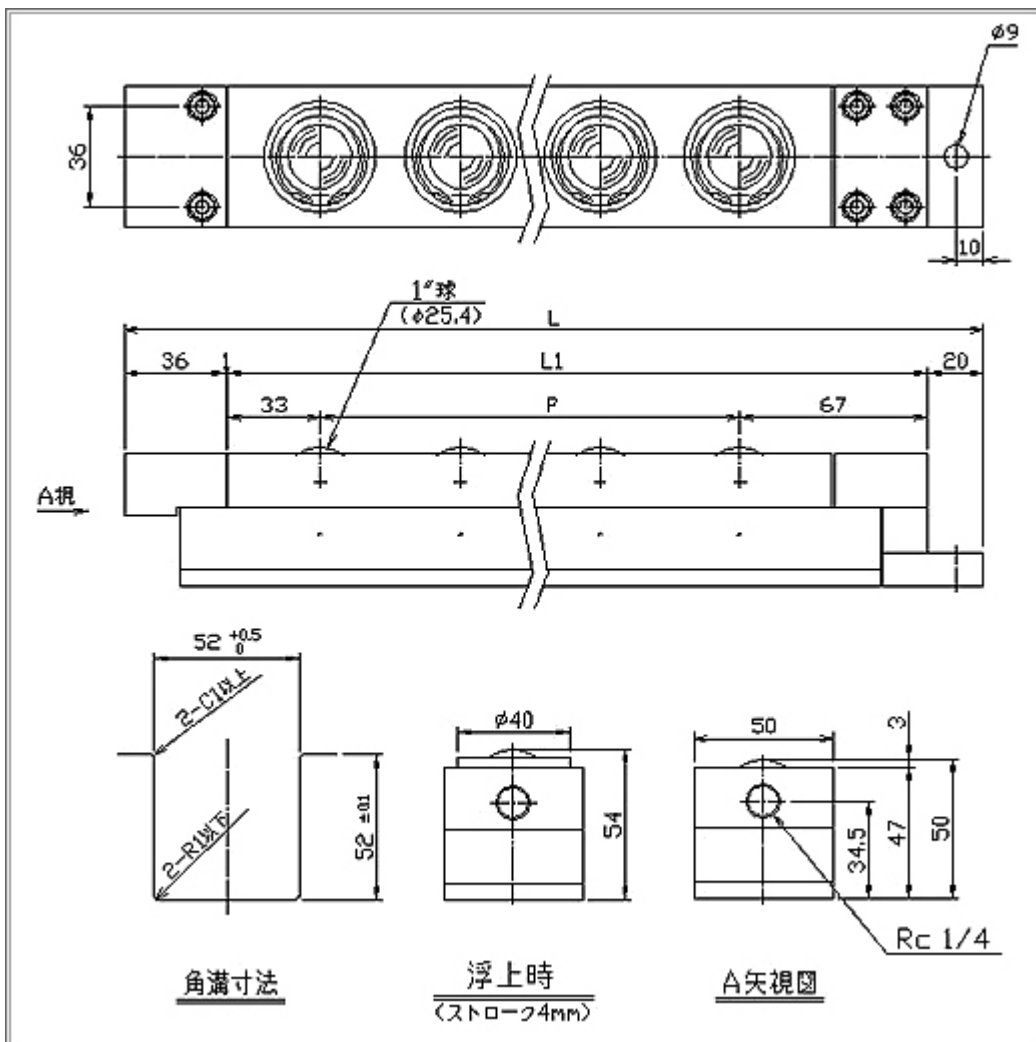


Model	Dimensions (mm)			weight (kg)	공기압과 부하능력의 관계 (kgf)					
	L	L1	P		프리 베이스 업 1 개			AFU 1 개		
					사용공기압 MPa (kgf/cm ²)			사용공기압 MPa (kgf/cm ²)		
					0.40(4.1)	0.50(5.1)	0.60(6.1)	0.40(4.1)	0.50(5.1)	0.60(6.1)
AFU-5050-1	140	83	---	2.0	0.51 (52.0)	0.64 (65.3)	0.77 (78.5)	0.51(52.0)	0.64(65.3)	0.77(78.5)
AFU-5050-2	190	133	1×P50=50	2.8				1.02(104.0)	1.28(130.5)	1.54(157.0)
AFU-5050-3	240	183	2×P50=100	3.6				1.53(156.0)	1.92(195.8)	2.31(235.6)
AFU-5050-4	290	233	3×P50=150	4.5				2.04(208.0)	2.56(261.0)	3.08(314.1)
AFU-5050-5	340	283	4×P50=200	5.3				2.55(260.0)	3.20(326.3)	3.85(392.6)
AFU-5050-6	390	333	5×P50=250	6.1				3.06(312.0)	3.84(391.6)	4.62(471.1)
AFU-5050-7)	440	383	6×P50=300	6.9				3.57(364.0)	4.48(456.8)	5.39(549.6)
AFU-5050-8	490	433	7×P50=350	7.7				4.08(416.0)	5.12(522.1)	6.16(628.1)
AFU-5050-9	540	483	8×P50=400	8.6				4.59(468.0)	5.76(587.4)	6.93(706.7)
AFU-5050-10	590	533	9×P50=450	9.4				5.10(520.1)	6.40(652.6)	7.70(785.2)
AFU-5050-11	640	583	10×P50=500	10.2				5.61(572.1)	7.04(717.9)	8.47(863.7)
AFU-5050-12	690	633	11×P50=550	11.0				6.12(624.1)	7.68(783.1)	9.24(942.2)
AFU-5050-13	740	683	12×P50=600	11.8				6.63(676.1)	8.32(848.4)	10.01(1020.7)
AFU-5050-14	790	733	13×P50=650	12.6				7.14(728.1)	8.96(913.7)	10.78(1099.3)
AFU-5050-15	840	783	14×P50=700	13.4				7.65(780.1)	9.60(978.9)	11.55(1177.8)
AFU-5050-16	890	833	15×P50=750	14.3				8.16(832.1)	10.24(1044.2)	12.32(1256.3)
AFU-5050-17	940	883	16×P50=800	15.1				8.67(884.1)	10.88(1109.5)	13.09(1334.8)
AFU-5050-18	990	933	17×P50=850	15.9				9.18(936.1)	11.52(1174.7)	13.86(1413.3)

▶ AIR Ball Transfer Unit 5050W Series

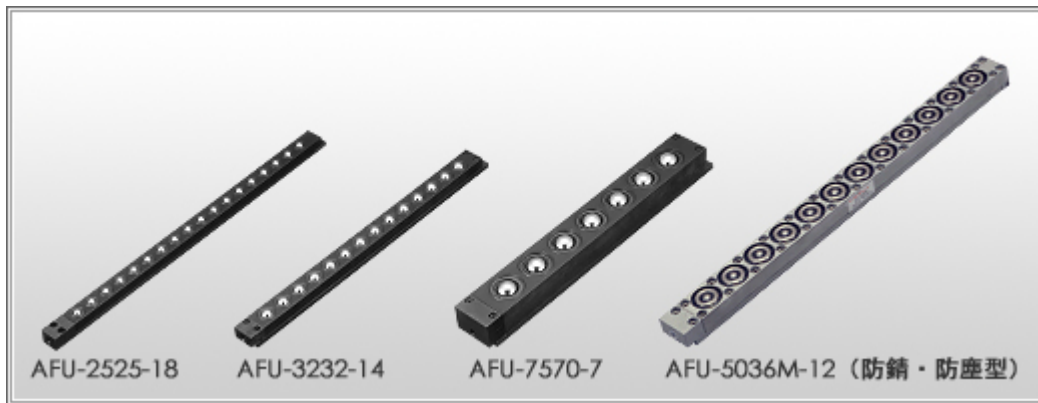


폭 : 50mm
 높이 : 50mm(부상 시54mm)
 스트로크: 4mm
 부하 능력 :130~2349kgf
 ※사용 공기 압0.5MPa (5.1kgf/cm²)

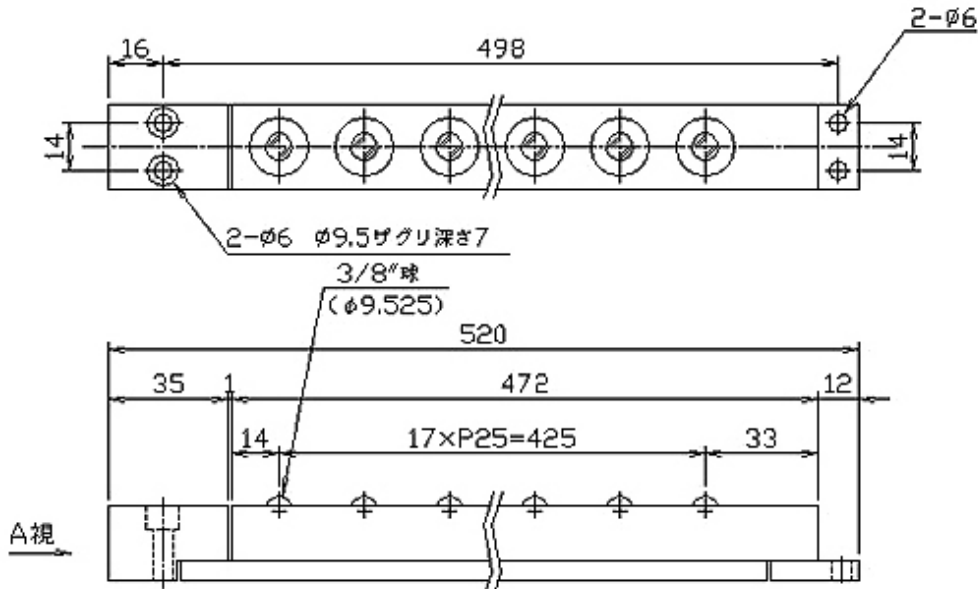


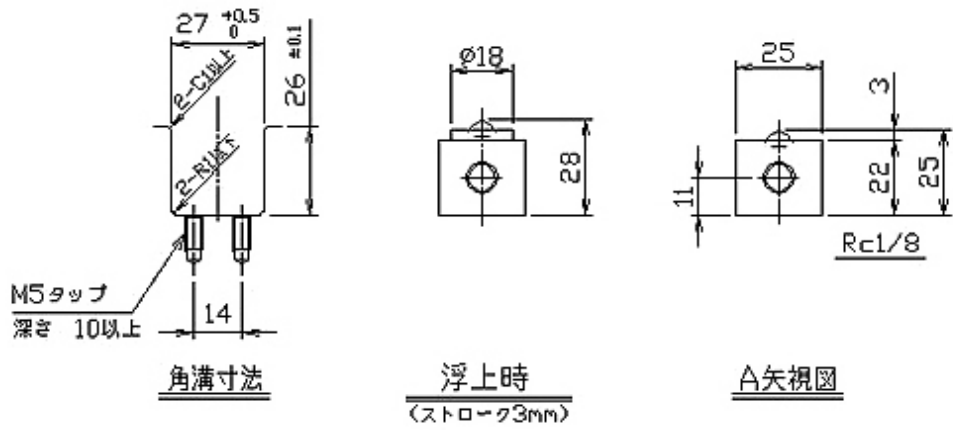
Model	Dimensions (mm)			weight (kg)	공기압과 부하능력과의 관계 (kgf)					
	L	L1	P		프리 베이스 업 1 개			AFU 1 개		
					사용공기압 MPa (kgf/cm ²)			사용공기압 MPa (kgf/cm ²)		
					0.40(4.1)	0.50(5.1)	0.60(6.1)	0.40(4.1)	0.50(5.1)	0.60(6.1)
AFU-5050W-1	157	100	---	2.5	1.02(104.0)	1.28(130.5)	1.53(156.0)	1.02(104.0)	1.28(130.5)	1.53(156.0)
AFU-5050W-2	207	150	1×P50=50	3.2				2.04(208.0)	2.56(261.0)	3.06(312.0)
AFU-5050W-3	257	200	2×P50=100	4.0				3.06(312.0)	3.84(391.6)	4.59(468.0)
AFU-5050W-4	307	250	3×P50=150	4.7				4.08(416.0)	5.12(522.1)	6.12(624.1)
AFU-5050W-5	357	300	4×P50=200	5.4				5.10(520.1)	6.40(652.6)	7.65(780.1)
AFU-5050W-6	407	350	5×P50=250	6.1				6.12(624.1)	7.68(783.1)	9.18(936.1)
AFU-5050W-7	457	400	6×P50=300	6.8				7.14(728.1)	8.96(913.7)	10.71(1092.1)
AFU-5050W-8	507	450	7×P50=350	7.6				8.16(832.1)	10.24(1044.2)	12.24(1248.1)
AFU-5050W-9	557	500	8×P50=400	8.3				9.18(936.1)	11.52(1174.7)	13.77(1404.1)
AFU-5050W-10	607	550	9×P50=450	9.0				10.20(1040.1)	12.80(1305.2)	15.30(1560.2)
AFU-5050W-11	657	600	10×P50=500	9.7				11.22(1144.1)	14.08(1435.8)	16.83(1716.2)
AFU-5050W-12	707	650	11×P50=550	10.4				12.24(1248.1)	15.36(1566.3)	18.36(1872.1)
AFU-5050W-13	757	700	12×P50=600	11.2				13.26(1352.1)	16.64(1696.8)	19.89(2028.2)
AFU-5050W-14	807	750	13×P50=650	11.9				14.28(1456.1)	17.92(1827.3)	21.42(2184.2)
AFU-5050W-15	857	800	14×P50=700	12.6				15.30(1560.2)	19.20(1957.8)	22.95(2340.2)
AFU-5050W-16	907	850	15×P50=750	13.3				16.32(1664.2)	20.48(2088.4)	24.48(2496.3)
AFU-5050W-17	957	900	16×P50=800	14.0				17.34(1768.2)	21.76(2218.9)	26.01(2652.3)
AFU-5050W-18	1007	950	17×P50=850	14.8				18.36(1872.2)	23.04(2349.4)	27.54(2808.3)

▶ Ball Transfer Unit : The Other AFU Series

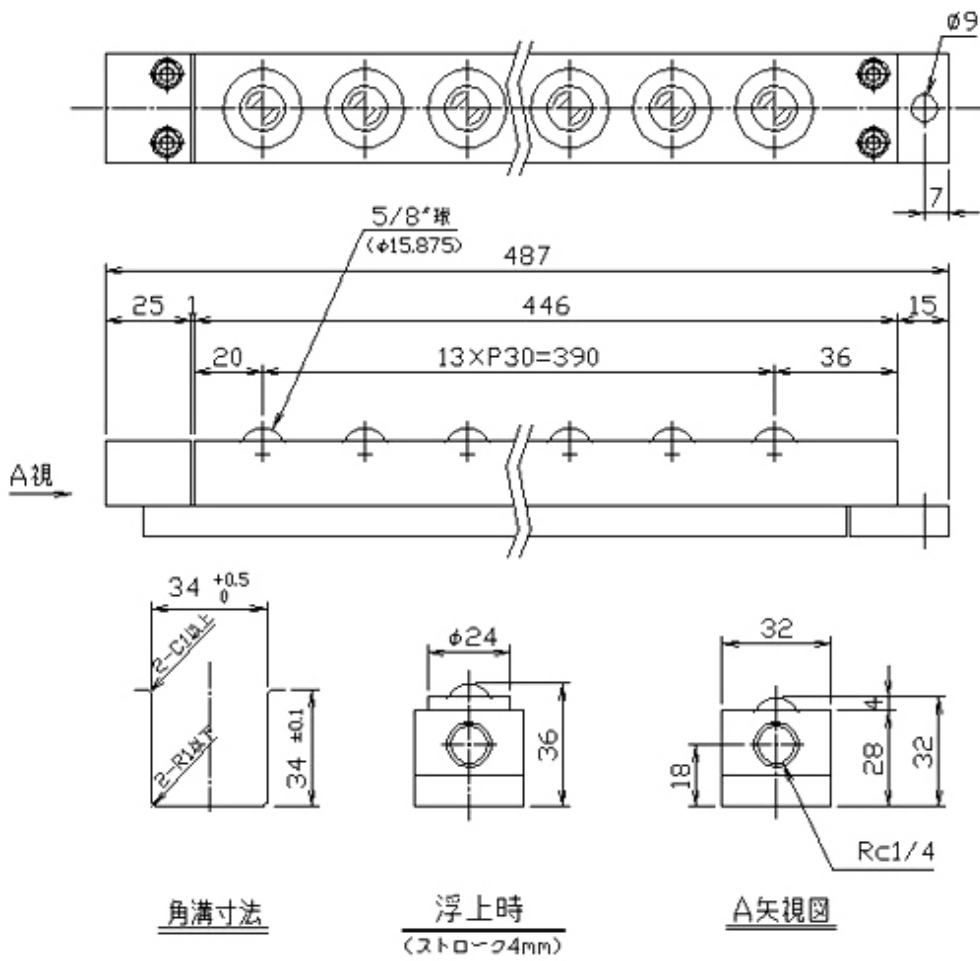


▶ AFU-2525-18

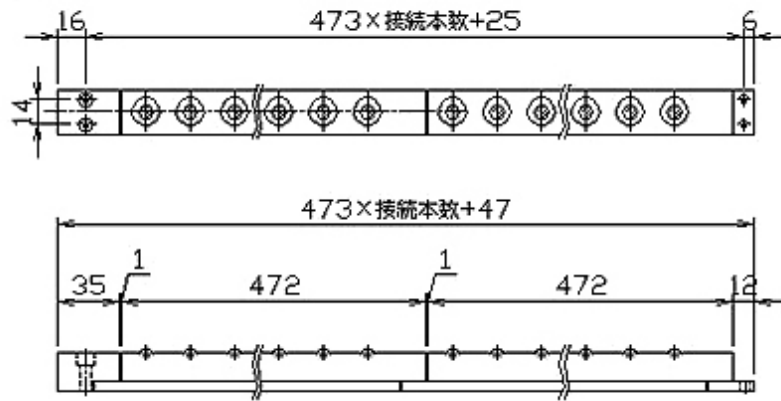




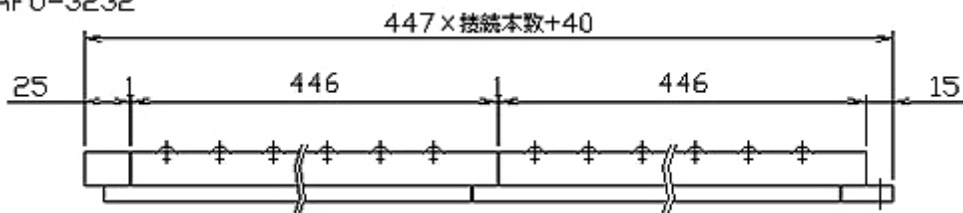
▶ AFU-3232-14



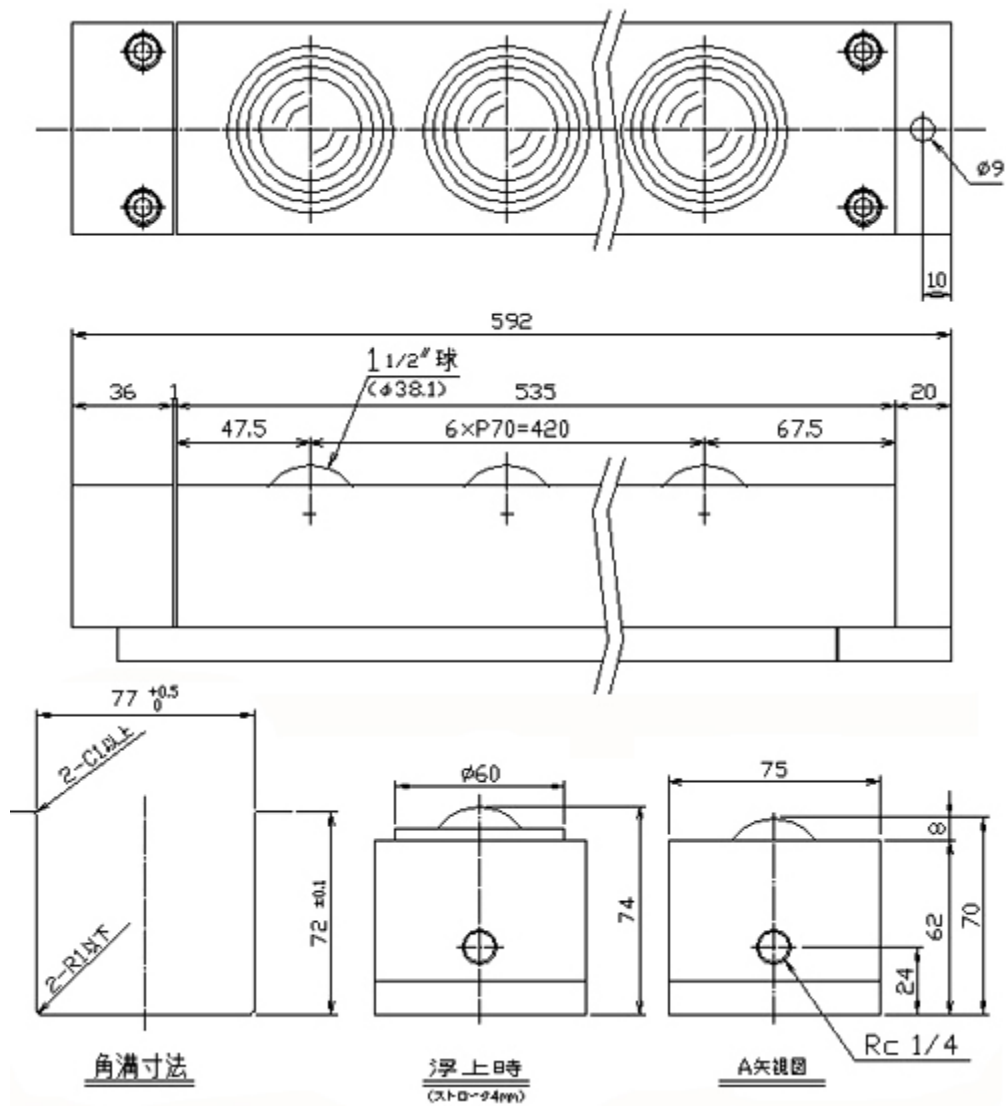
AFU-2525



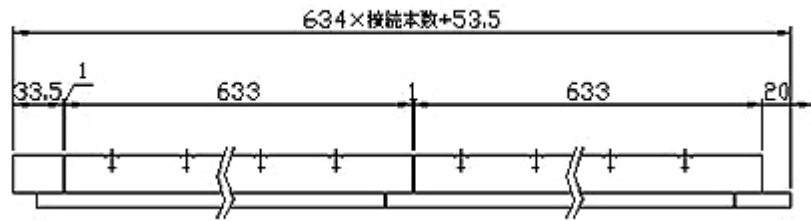
AFU-3232



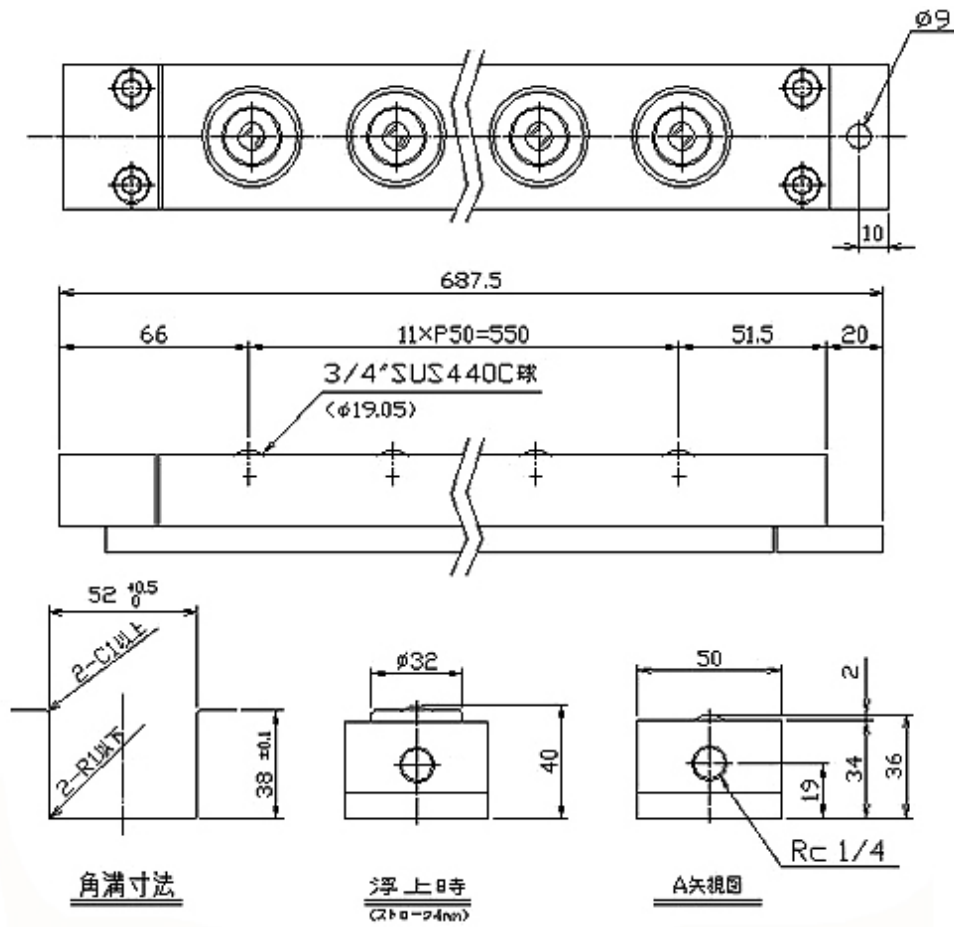
▶ AFU-7570-7



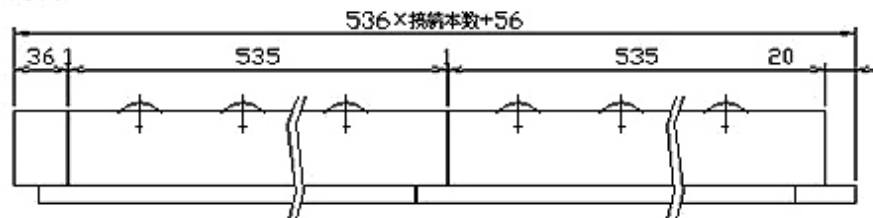
AFU-5036M



▶ AFU-5036M-12



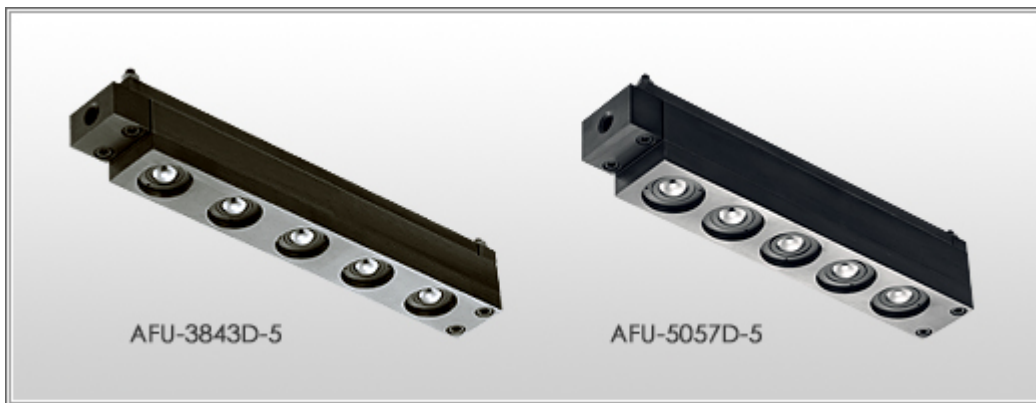
AFU-7570

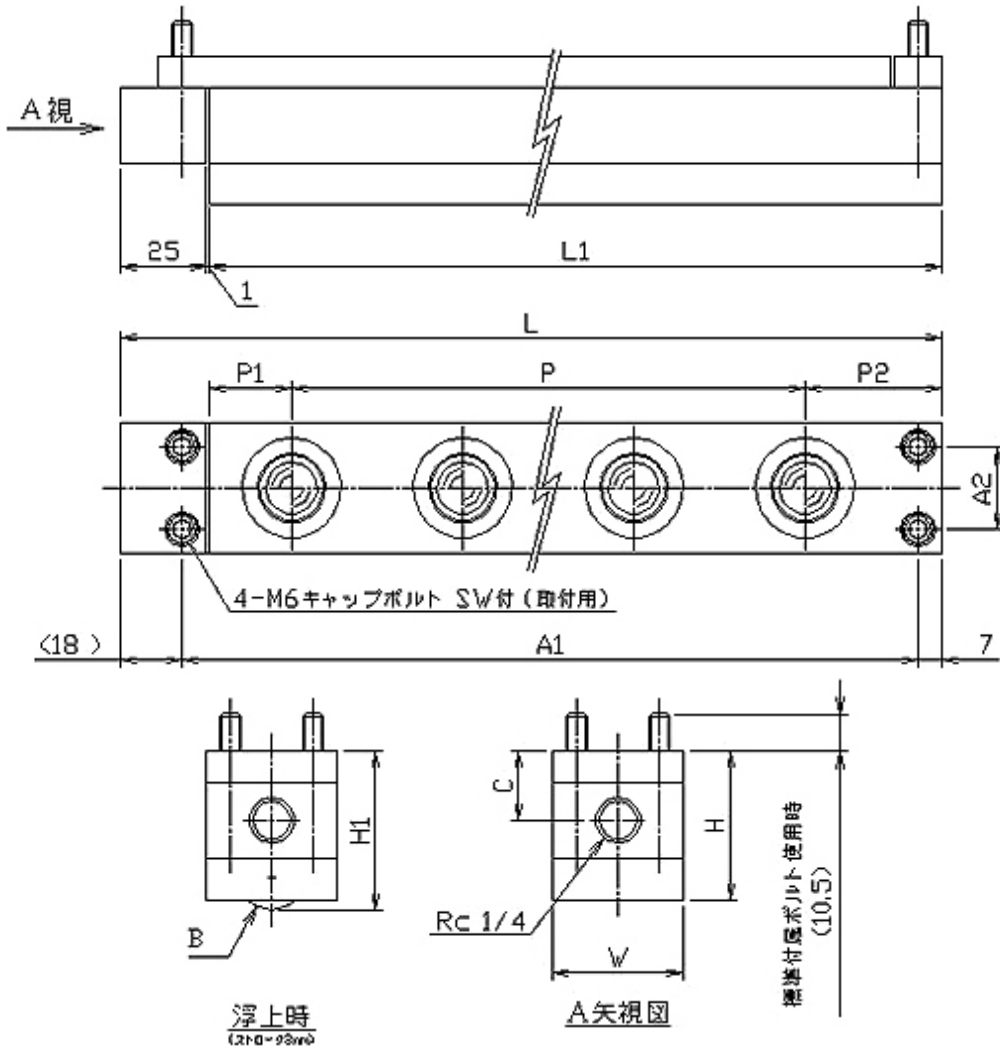


Model	Sguar srot		Dimensions (mm)																		
			D	H	H1	H2	H3	H4	Stroke	L	L1	L2	L3	P	P1	P2	K	B	Y	Air in-take	Weight (kg)
	h	d																			
AFU-2525-18	26	27	25	25	22	28	11	3	3	520	472	35	12	17xP25=425	14	33	6	3/8" (9.525)	6	Rc1/8	2.0
AFU-3232-14	34	34	32	32	28	36	18	4	4	487	446	25	15	13xP30=390	20	36	7	5/8" (15.875)	9	Rc1/4	3.0
AFU-7570-7	72	77	70	62	74	24	8	592		535	36	20	6xP70=420	47.5	67.5	10	1 1/2" (38.10)	19.4			
AFU-5036M-12	38	52	36	34	40	19	2	686		633	32	20	11xP50=550	33	50		3/4" (19.05)	7.4			

공기압과 부하능력과의 관계 (kgf)					
프리 베이스 업 1 개			AFU 1 개		
사용공기압 MPa(kgf/cm²)			사용공기압 MPa(kgf/cm²)		
0.40 (4.1)	0.50 (5.1)	0.60 (6.1)	0.40 (4.1)	0.50 (5.1)	0.60 (6.1)
0.09 (9.2)	0.12 (12.3)	0.14 (14.3)	1.62 (165.2)	2.16 (220.3)	2.52 (257.0)
0.16 (16.3)	0.20 (20.4)	0.24 (24.5)	2.24 (228.4)	2.80 (285.5)	3.36 (342.6)
1.06 (108.1)	1.33 (135.6)	1.60 (163.2)	7.42 (756.6)	9.31 (949.4)	11.2 (1142.1)
0.24 (24.5)	0.31 (31.6)	0.39 (39.8)	2.88 (293.7)	3.72 (379.3)	4.68 (477.2)

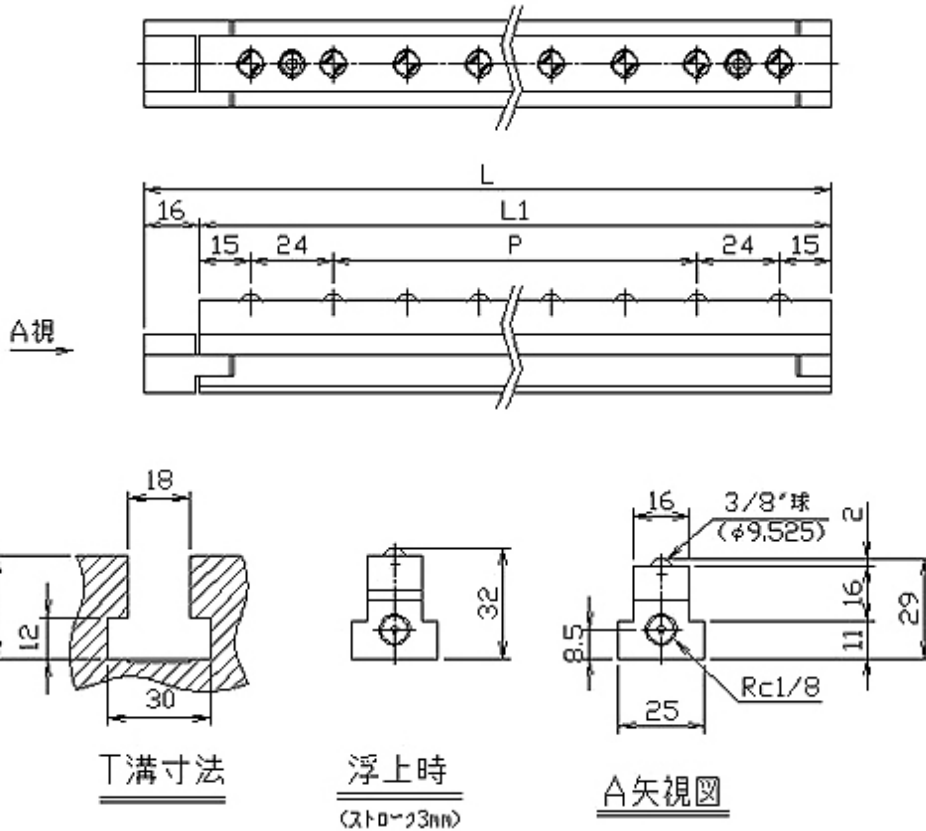
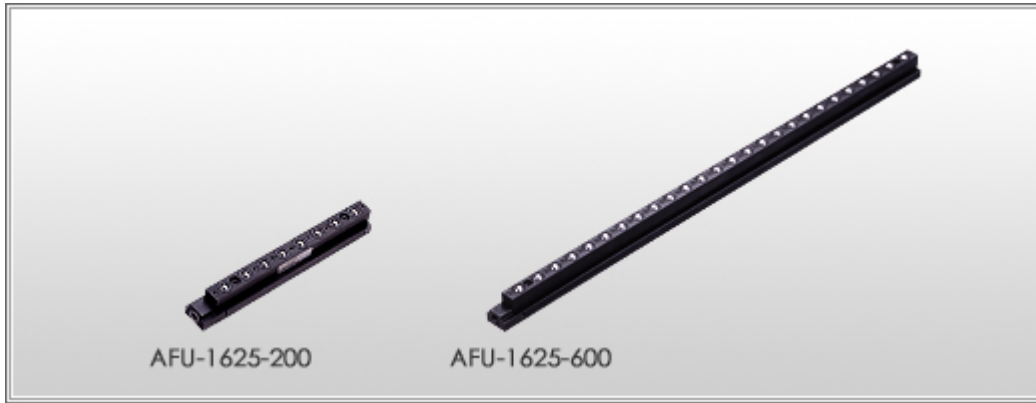
▶ AFU-3843D-5 , AFU-5057D-5 (하향용)





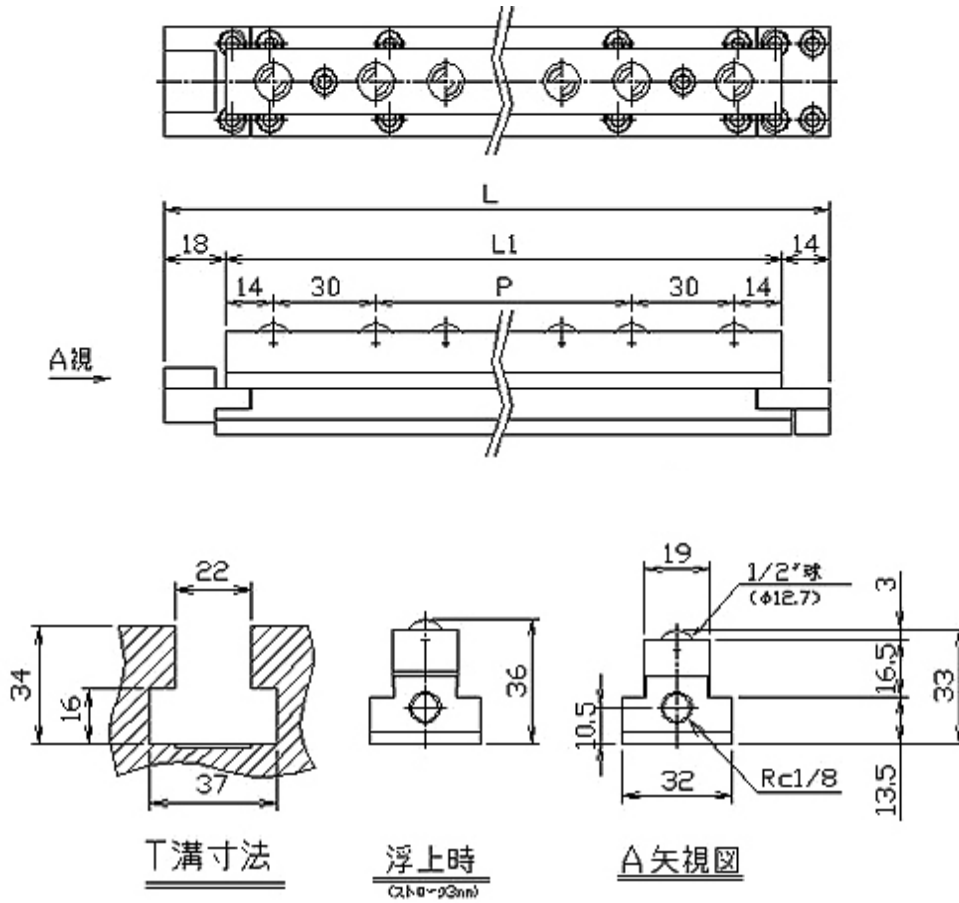
Model	Dimensions (mm)												Weight (kg)	공기압과 부하능력과의 관계 (kgf)					
	D	H	H1	H2	L	L1	P	P1	P2	K	K2	B		프리 베이스 업 1 개			AFU 1 개		
														사용공기압 MPa(kgf/cm ²)			사용공기압 MPa(kgf/cm ²)		
														0.40 (4.1)	0.50 (5.1)	0.60 (6.1)	0.40 (4.1)	0.50 (5.1)	0.60 (6.1)
AFU-3843D-5	38	43	46	20	290	264	4xP50=200	24	40		24	3/4" (19.05)	3.2	0.23 (23.5)	0.31 (31.6)	0.39 (39.8)	1.15 (117.3)	1.55 (158.1)	1.95 (198.8)
AFU-3843D-10					540	514	9xP50=450					515	6.0				2.30 (234.5)	3.10 (316.1)	3.90 (397.7)
AFU-5057D-5	50	57	60	25	300	274	4xP50=200	28	46		34	1" (25.40)	5.8	0.47 (47.9)	0.58 (59.1)	0.70 (71.4)	2.35 (239.6)	2.90 (295.7)	3.50 (397.7)
AFU-5057D-10					550	524	9xP50=450					525	10.0				4.70 (479.3)	5.80 (591.4)	7.00 (713.8)

▶ AFU-1625-200 , AFU-1625-600



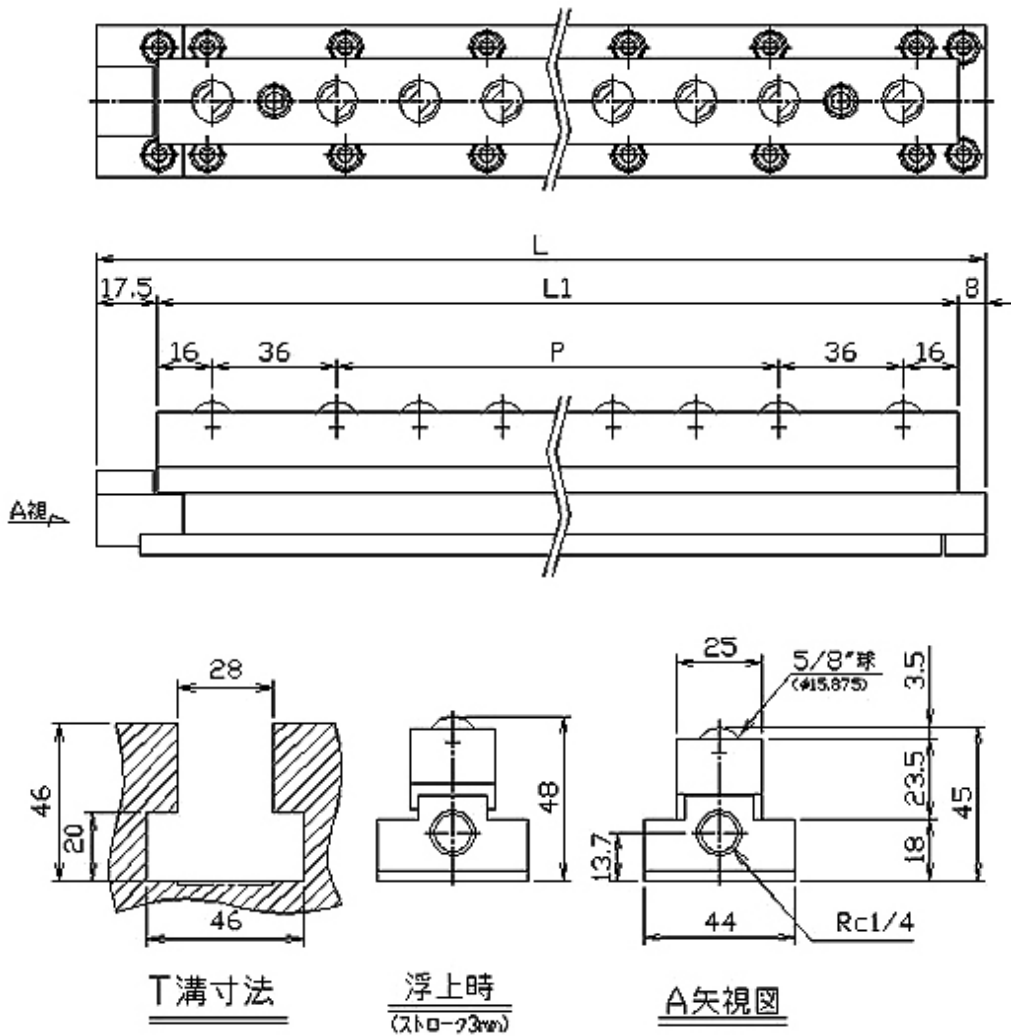
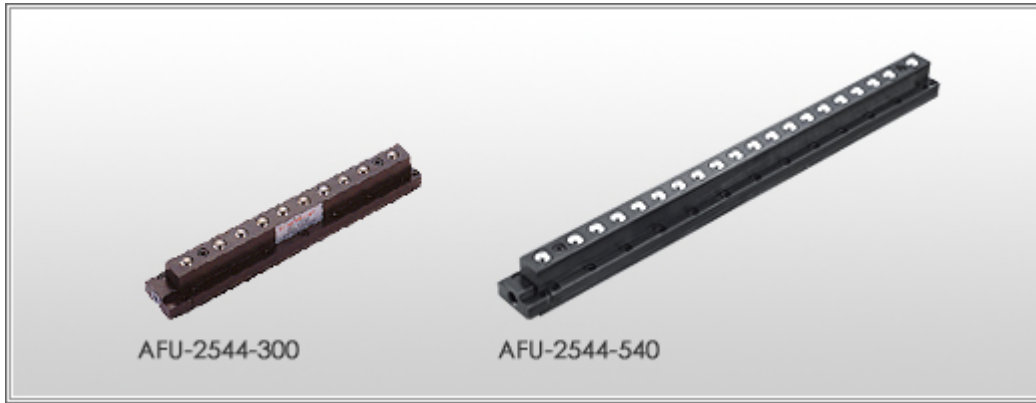
Model	Dimensions (mm)			weight (kg)	Relationship between air pressure and load capacity (kgf)		
	L	L1	P		Applied air pressure MPa(kgf/cm ²)		
					0.40(4.1)	0.50(5.1)	0.60(6.1)
AFU-1625-200	200	184	5xP21.2=106	0.8	0.47(47.9)	0.59(60.2)	0.71(72.4)
AFU-1625-600	600	584	23xP22=506	2.2	1.65(170.3)	2.06(210.1)	2.47(251.9)

▶ AFU-1932 Series



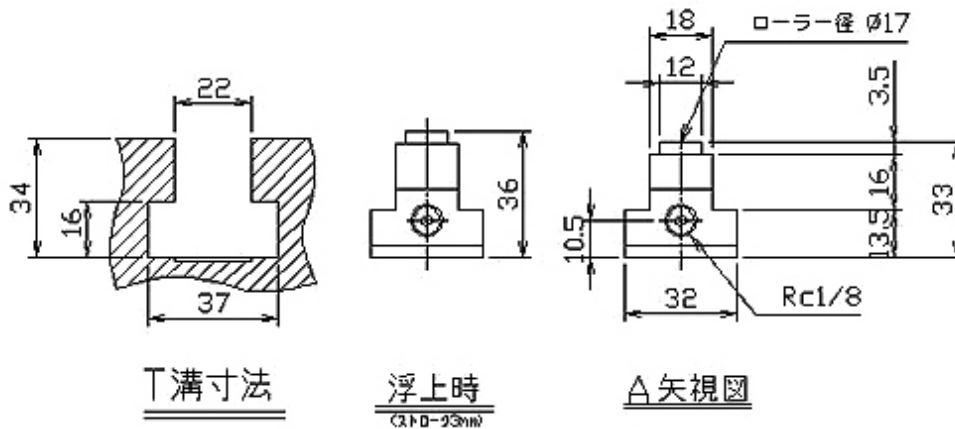
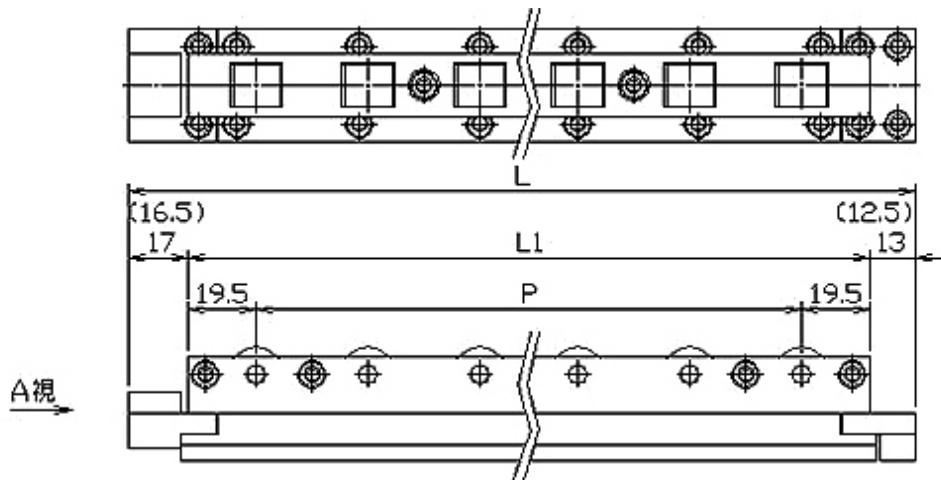
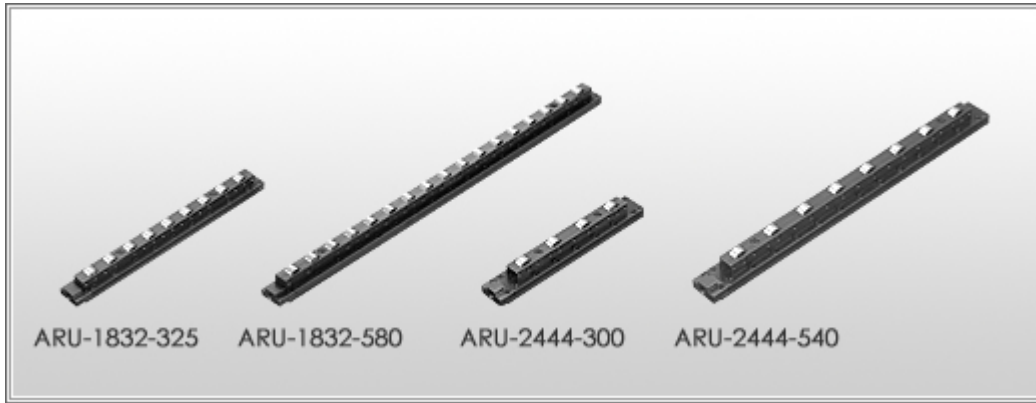
Model	Dimensions (mm)			weight (kg)	공기압과 부하능력과의 관계 (kgf)		
	L	L1	P		사용공기압 MPa(kgf/cm ²)		
					0.40(4.1)	0.50(5.1)	0.60(6.1)
AFU-1932-325	325	293	10xP20.5=205	2.6	1.18(120.3)	1.57(160.1)	1.96(199.9)
AFU-1932-580	580	548	23xP20=460	4.8	2.36(240.7)	3.14(320.2)	3.92(399.7)
AFU-1932-680	680	648	28xP20=560	6.0	2.65(270.2)	3.53(360.0)	4.41(449.7)

▶ AFU-2544 Series



Model	Dimensions (mm)			weight (kg)	공기압과 부하능력과의 관계 (kgf)		
	L	L1	P		사용공기압 MPa(kgf/cm ²)		
					0.40(4.1)	0.50(5.1)	0.60(6.1)
AFU-2544-300	297.5	272	7xP24=168	2.6	1.47(149.9)	1.96(199.9)	2.45(249.8)
AFU-2544-540	537.5	512	17xP24=408	4.8	2.94(299.8)	3.92(399.8)	4.91(500.1)
AFU-2544-680	681.5	656	23xP24=552	6.0	3.68(375.3)	4.90(499.7)	6.13(625.1)

▶ ARU-1832 , 2444 Series



Model	Dimensions (mm)																	weight (kg)
	D	D1	D2	H	H1	H2	H3	H4	H5	L	L1	L2	L3	P	P1	P2	R	
ARU-1832-325	32	18	12	33	36	13.5	16	3.5	10.5	325	295	17	13	6xP32=192	19.5	32	17	1.5
ARU-1832-580										580	551	16.5	12.5	14xP32=448				2.7
ARU-2444-300	44	24	13	45	48	18	22	5	13.7	297.5	228	39.5	30	1xP60=60	23	61	24	2.4
ARU-2444-540										537.5	468			5xP60=300				4.5

Relationship between air pressure and load capacity (kgf)		
Applied air pressure MPa(kgf/cm ²)		
0.40 (4.1)	0.50 (5.1)	0.60 (6.1)
1.18 (120.3)	1.57 (160.1)	1.96 (199.9)
2.36 (240.7)	3.14 (320.2)	3.92 (399.7)
1.47 (149.9)	1.96 (199.9)	2.45 (249.8)
2.94 (299.8)	3.92 (399.8)	4.91 (500.1)

유일FA시스템

주소:서울 구로구 구로본동 1258 중앙유통단지 라동 7열 2720~1호

전화:02-2683-4825~6

팩스:02-6679-4827

Email: bearing@yuilbearing.com