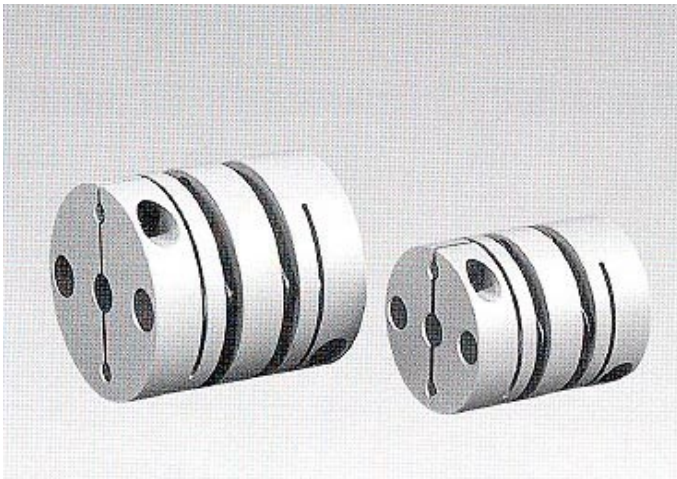


SFC - WD SERVOFLEX



- **Easy mounting by perfect monoblock construction**
Shaft bores are drilled and shaft clamps are provided as subassemblies. Quick and correct mounting is assured.
- **Application-oriented specification**
Specifications and dimensions are tailored for use in digital servo motors.
- **High quality**
Flanges and spacers are made of extra super duralumin and plate springs are made of stainless steel.

Specification

Model	SFC-010WD	SFC-020WD	SFC-030WD	SFC-035WD	SFC-040WD	SFC-050WD	SFC-060WD ²	SFC-080WD ²	
Permissible Torque [N·m]	1.0	1.5	3.0	6.0	9.0	25.0	60	100	
Maximum Speed [r/min]	10000	10000	10000	10000	10000	10000	10000	10000	
Torsional Spring Constant [N·m/rad]	170	580	1300	2000	2700	6300	18000	33000	
Axial Spring Constant [N/mm]	70	32	32	28	20	24	38.2	27.4	
¹ Inertia [kg·m ²]	0.9×10^{-6}	3.0×10^{-6}	10.5×10^{-6}	26.3×10^{-6}	38×10^{-6}	144.3×10^{-6}	375.8×10^{-6}	1080×10^{-6}	
Maximum Permissible misalignment	Parallel offset [mm]	0.12	0.15	0.17	0.22	0.22	0.27	0.34	0.52
	Angular misalignment [°]	1 (one side)	1 (one side)	1 (one side)	1 (one side)	1 (one side)	1 (one side)	1 (one side)	1 (one side)
	Axial Displacement [mm]	±0.2	±0.33	±0.4	±0.5	±0.6	±0.8	±0.9	±1.1
¹ Mass [g]	16	35	62	116	131	302	550	1200	

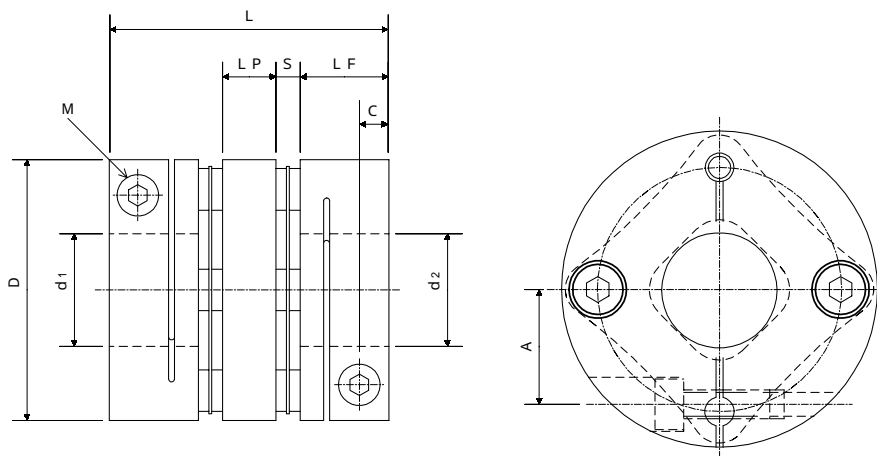
• Values marked with the ¹ symbol apply for the maximum bore diameter.

• Items marked with the ² symbol is available by special order only. For further details, please contact us.

■ Ordering Information : Specify

SFC - WD B - B

Design Types and Dimensions



Model	SFC-010WD	SFC-020WD	SFC-030WD	SFC-035WD	SFC-040WD	SFC-050WD	SFC-060WD ²	SFC-080WD ²
d1 · d2	4 · 5 · 6 · 7 · 8	5 · 6 · 7 · 8 · 9 · 10	8 · 9 · 10 · 11 · 12 · 14	10 · 11 · 12 · 14 · 15 · 16	11 · 12 · 14 · 15 · 16 · 19	14 · 15 · 16 · 20 · 22 · 24	---	---
Standard	4 · 5 · 6 · 7 · 8	5 · 6 · 7 · 8 · 9 · 10	8 · 9 · 10 · 11 · 12 · 14	10 · 11 · 12 · 14 · 15 · 16	11 · 12 · 14 · 15 · 16 · 19	14 · 15 · 16 · 20 · 22 · 24	---	---
Min	4	5	6	8	8	10	15	20
Max	8	10	14	16	19	25	30	35
D	19	26	34	39	44	56	68	82
L	26.7	31.9	37.2	47.2	47.2	61	74	98
LF	9	10.5	12	15	15	20	24	30
LP	5	6	7	9	9	11	14	22
S	1.9	2.5	3.1	4.1	4.1	5	6	8
A	5.8	9.5	12.5	13	16	21	25	28
C	3	3.5	4	5	5	7	8	9
M	2-M2.5 ¹	2-M2.5	2-M3	2-M4	2-M4	2-M5	2-M6	2-M8

- Values marked with the ¹ symbol, applies just for when d1 or d2 is between 4 and 7. When d1 or d2 is 8, the screw is changed to 2-M2. (Clamping screw should be tighten to the specified torque.)
- Item marked with the ² symbol are available by special order only. For the further information, please contact us.
- The recommended tolerance for the shaft on to which the coupling is to be mounted is h7. (Manufacturing dimensional tolerance of the shaft $\phi 35$ is $\begin{matrix} +0.010 \\ -0.020 \end{matrix}$)