

# Rexroth Ball Rail Systems

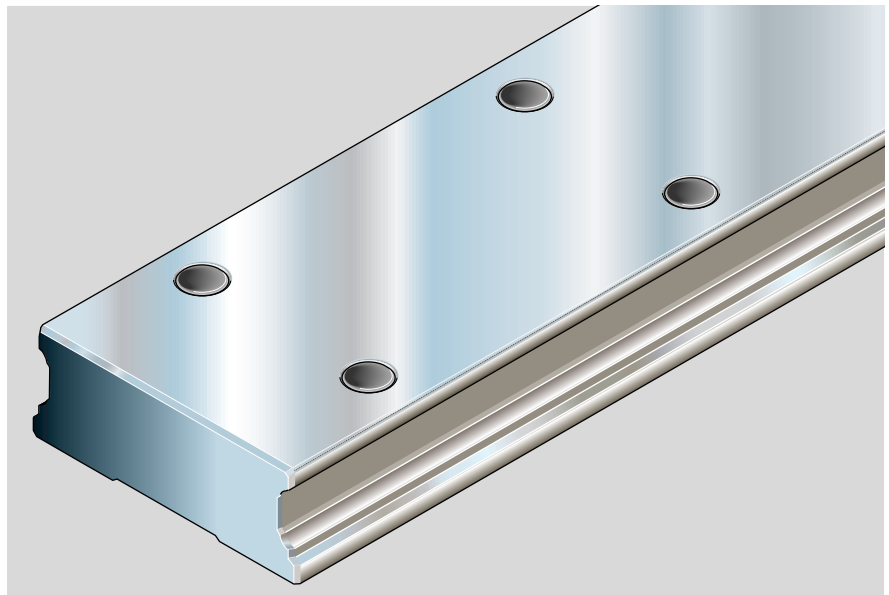
## Wide Guide Rails

### Guide Rail 1675-

Wide, for mounting from above

- Plastic mounting hole plugs are supplied along with the rail.  
Reordering data: see table inset on right for part numbers.
- For special applications:  
Guide rails for steel mounting hole plugs,  
Part numbers: **1676-.5.-**  
Steel mounting hole plugs to be ordered separately.

A mounting jig with instruction leaflet is available for mounting steel mounting hole plugs.



Size	Part numbers Mounting jig
25/70	1619-210-40
35/90	1619-310-40

### Part numbers and rail lengths

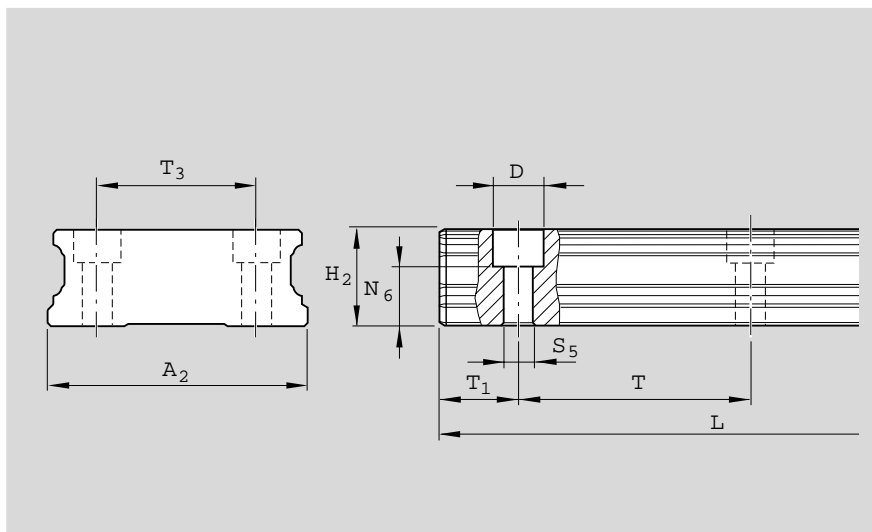
Size	Accuracy class	Guide Rail		Spacing T (mm)	Recommended rail length				
		One-piece Part number, Rail length L (mm)	Composite Part number, Number of sections Rail length L (mm)		Number of holes $n_B$ / Rail length L (mm) per row				
20/40	P	1675-802-31,.....	1675-802-3,.....	60	2 / 116	7 / 416	12 / 716	20 / 1196	40 / 2396
	H	1675-803-31,.....	1675-803-3,.....		3 / 176	8 / 476	13 / 776	22 / 1316	50 / 2996
	N	1675-804-31,.....	1675-804-3,.....		4 / 236	9 / 536	14 / 836	25 / 1496	60 / 3596
25/70	P	1675-202-31,.....	1675-202-3,.....	80	5 / 296	10 / 596	16 / 956	30 / 1796	66 / 3956
	H	1675-203-31,.....	1675-203-3,.....		6 / 356	11 / 656	18 / 1076	35 / 2096	
	N	1675-204-31,.....	1675-204-3,.....		2 / 156	7 / 556	12 / 956	20 / 1596	40 / 3196
35/90	P	1675-302-31,.....	1675-302-3,.....	80	3 / 236	8 / 636	13 / 1036	22 / 1756	50 / 3996
	H	1675-303-31,.....	1675-303-3,.....		4 / 316	9 / 716	14 / 1116	25 / 1996	
	N	1675-304-31,.....	1675-304-3,.....		5 / 396	10 / 796	16 / 1276	30 / 2396	
					6 / 476	11 / 876	18 / 1436	35 / 2796	

### Mounting hole plugs

Size	Plastic mounting hole plugs Part numbers
20/40	1605-100-80
25/70	1605-200-80
35/90	1605-300-80

Size	Steel mounting hole plugs Part numbers
25/70	1606-200-75
35/90	1606-300-75

## Dimensions and masses



Size	Dimension (mm)										Mass (kg/m)
	A <sub>2</sub>	H <sub>2</sub>	N <sub>6</sub> <sup>±0.5</sup>	D	S <sub>5</sub>	T <sub>1S</sub> <sup>+0.5/-1.0</sup>	T <sub>1min</sub>	T	T <sub>3</sub>	L <sub>max</sub>	
20/40	42	19.05	13.2	7.4	4.4	28	10	60	24	4 000	5.3
25/70	69	23.40	14.4	11.0	7.0	38	10	80	40	4 000	11.6
35/90	90	32.00	20.5	15.0	9.0	38	12	80	60	4 000	21.0

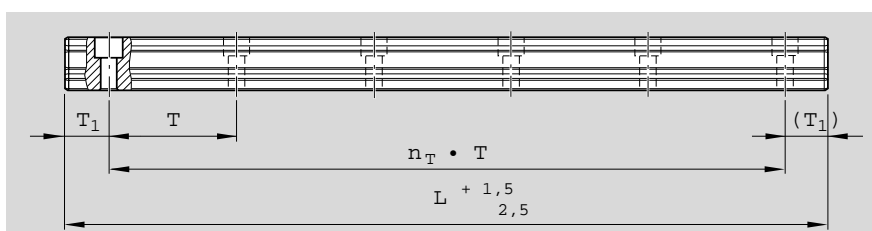
### Ordering a guide rail

- Wherever possible, the recommended rail lengths as per table should be used.

#### Ordering example 1:

Guide rail size 35/90, accuracy class H, rail length 1756 mm,  
(21 · T, number of holes n<sub>B</sub> = 22 means 44 holes in 2 rows)

Ordering information: **1675-303-31, 1756 mm**



### Intermediate lengths

Calculation of rail length L and ordering examples:

- The preferred dimension is T<sub>1S</sub>
- If T<sub>1S</sub> cannot be used, then
  - Select an end space T<sub>1</sub> between T<sub>1S</sub> and T<sub>1min</sub>
  - Do not go below the minimum spacing T<sub>1min</sub>!

#### Note

- T<sub>1</sub>, T<sub>1min</sub>, T<sub>1S</sub> are the same at either end of the guide rail

$L = n_B \cdot T - 4$ <p>or</p> $L = n_T \cdot T + 2 \cdot T_{1S}$	L = rail length (mm) T = hole spacing*) (mm) T <sub>1S</sub> = preferred dimension*) (mm) n <sub>B</sub> = number of holes per row n <sub>T</sub> = number of spaces *) see tables for values
--	--

#### Ordering example 2 (up to L<sub>max</sub>):

Guide rail size 35/90,

accuracy class P,  
rail length 1676 mm,  
(20 · T, preferred dimension T<sub>1S</sub> = 38 mm;  
number of holes n<sub>B</sub> = 21 giving 42 holes in 2 rows)

#### Ordering data:

Part number, length (mm)  
T<sub>1S</sub> / n<sub>T</sub> · T / T<sub>1S</sub> (mm)

**1675-302-31, 1676 mm**  
**38 / 20 · 80 / 38 mm**

Rail lengths above L<sub>max</sub> are made up of fitted rail sections mounted end to end.

#### Ordering example 3 (over L<sub>max</sub>):

Guide rail size 35/90,  
accuracy class P,  
rail length 5036 mm, 2 sections  
(62 · T, preferred dimension T<sub>1S</sub> = 38 mm;  
number of holes n<sub>B</sub> = 63  
giving 126 holes in 2 rows)

#### Ordering data:

Part number and number of sections,  
length (mm)  
T<sub>1S</sub> / n<sub>T</sub> · T / T<sub>1S</sub> (mm)

**1675-302-32, 5036 mm**  
**38 / 62 · 80 / 38 mm**