

STAR – Roller Rail™ Systems

Guide Rails

Guide Rail 1805-.6. -

For mounting from above,
with Rail Seal cover strip of
corrosion resistant spring steel
to DIN 17230 / EN 10088 and
screw-mounted protective caps

Observe the mounting instructions!
Send for the publication "Mounting
Instructions for the Rail Seal".

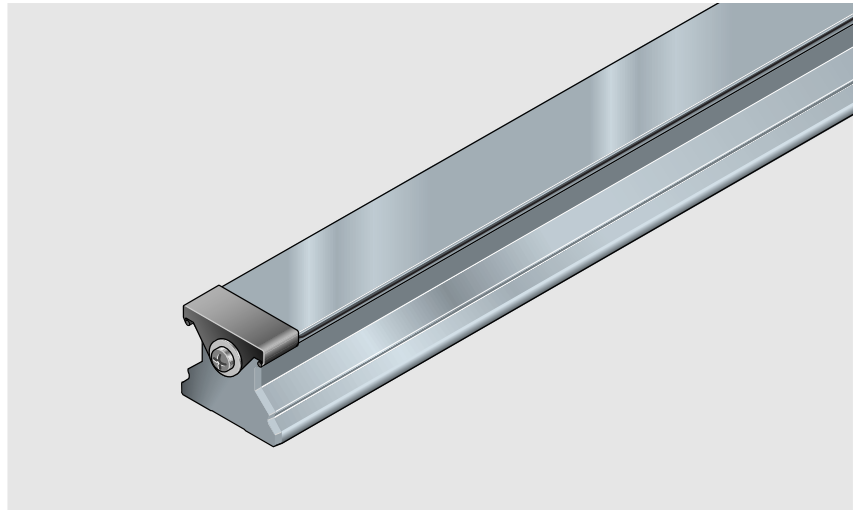
NEW:

Sizes 35 to 65

0.30 mm Rail Seal

Size 25:

0.15 mm Rail Seal



The guide rails are also available as
composite rails, see ordering example 3.

Part numbers and rail lengths

Size	Accuracy class	Guide Rail with Rail Seal and protective caps Part number, Rail length L (mm)
25	UP	1805-269-31,.....
	SP	1805-261-31,.....
	P	1805-262-31,.....
	H	1805-263-31,.....
35	UP	1805-369-61,.....
	SP	1805-361-61,.....
	P	1805-362-61,.....
	H	1805-363-61,.....
45	UP	1805-469-61,.....
	SP	1805-461-61,.....
	P	1805-462-61,.....
	H	1805-463-61,.....
55	UP	1805-569-61,.....
	SP	1805-561-61,.....
	P	1805-562-61,.....
	H	1805-563-61,.....
65	UP	1805-669-61,.....
	SP	1805-661-61,.....
	P	1805-662-61,.....
	H	1805-663-61,.....

Dimensions and weights

Special version:
Zinc-iron coating, yellow chromated, in accuracy class H.

Part Numbers:

- 1846-.63-3. (end faces uncoated)
- 1846-.63-4. (end faces coated)

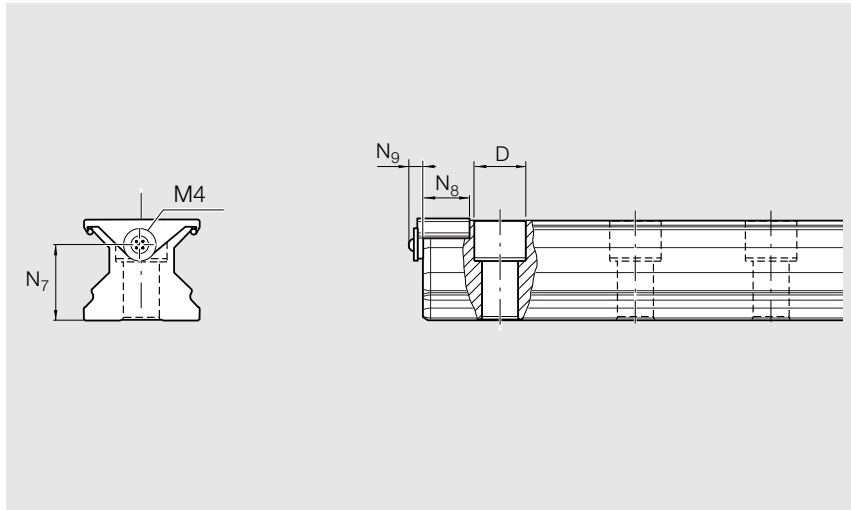
with 0.3 mm Rail Seal:

- 1846-.63-6. (end faces uncoated)
- 1846-.63-7. (end faces coated)

1) Dimension H_2 with Rail Seal.

Sizes 35 to 65 with 0.3 mm Rail Seal

- 2) If end space is less than T_{1min} , there will be no thread on the rail end face to secure the Rail Seal!
Always secure the Rail Seal!
See mounting instructions.
Protective cap, screw and washer delivered along with the rail.

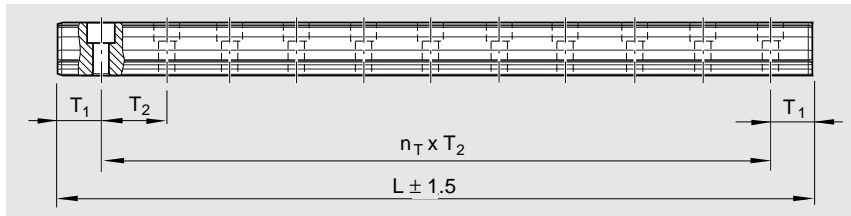


Size	Dimensions (mm)												Weight kg/m
	A_2	$H_2^{1)}$	$N_6^{\pm 0.5}$	N_7	N_8	N_9	D	S_5	$T_{1S}^{\pm 0.5}$	$T_{1min}^{2)}$	T_2	L_{max}	
25	23	23.55	14.3	15.0	15.2	6.5	11.0	7.0	13.00	13	30.0	4000	3.1
35	34	31.10	19.4	22.0	18.0	7.0	15.0	9.0	18.00	16	40.0	4000	6.3
45	45	39.10	22.4	30.0	20.0	7.0	20.0	14.0	24.25	18	52.5	4000	10.3
55	53	47.85	28.7	30.0	20.0	7.0	24.0	16.0	28.00	20	60.0	4000	13.1
65	63	58.15	36.5	40.0	20.0	7.0	26.0	18.0	35.50	21	75.0	4000	17.4

Ordering a guide rail

Ordering example 1:

Guide rail size 35 with Rail Seal and protective caps, accuracy class H, rail length 1756 mm, Ordering data: **1805-363-61, 1756 mm** (equal T_1 on both ends)



Part Numbers for composite guide rails

For rail lengths over L_{max} , the part numbers given here are also valid except that the figure 1 in the number 61 is replaced by the number of sections. See Ordering Example 2.

$$L = n_B \cdot T_2 - 4$$

or

$$L = n_{T_2} \cdot T_2 + 2 \cdot T_{1S}$$

L = rail length (mm)
 T_2 = hole spacing*) (mm)
 T_{1S} = preferred dimension*) (mm)
 n_B = number of holes
 n_{T_2} = number of spaces
 *) see table for values

Intermediate lengths

Calculation of rail length L and ordering examples:

- The preferred dimension is T_{1S}
- If T_{1S} cannot be used, then
 - Select an end space T_1 between T_{1S} and T_{1min}
 - Do not go below the minimum spacing T_{1min} !

Note

- T_1 , T_{1min} , T_{1S} are the same at either end of the rail, unless otherwise specified.

Rail lengths above L_{max} are made up of fitted rail sections mounted end to end.

Ordering example 2 (over L_{max}):

Guide rail size 35 with Rail Seal, Accuracy class H, Rail length 5036 mm, 2 sections

Ordering data:

Part number and number of sections, length
 $T_1 / n_{T_2} \cdot T_2 / T_1$ (mm)

1805-363-62, 5036 mm
18 / 125 · 40 / 18 mm