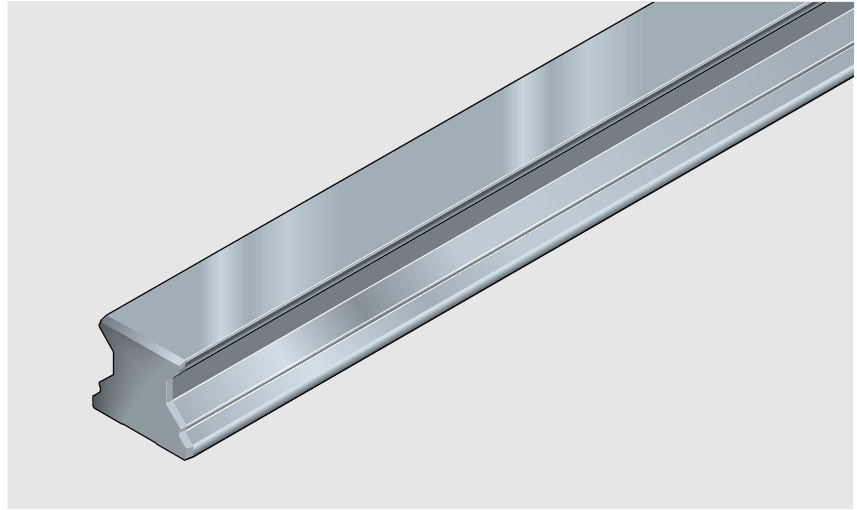


STAR – Roller Rail™ Systems

Guide Rails

Guide Rail 1807-

For mounting from below



Part numbers and rail lengths

Size	Accuracy class	Guide rail	
		one-piece Part number Rail length L (mm)	composite Part number No. of sections, Rail length L (mm)
25	UP	1807-209-31,...	1807-209-3..., ...
	SP	1807-201-31,...	1807-201-3..., ...
	P	1807-202-31,...	1807-202-3..., ...
	H	1807-203-31,...	1807-203-3..., ...
35	UP	1807-309-31,...	1807-309-3..., ...
	SP	1807-301-31,...	1807-301-3..., ...
	P	1807-302-31,...	1807-302-3..., ...
	H	1807-303-31,...	1807-303-3..., ...
45	UP	1807-409-31,...	1807-409-3..., ...
	SP	1807-401-31,...	1807-401-3..., ...
	P	1807-402-31,...	1807-402-3..., ...
	H	1807-403-31,...	1807-403-3..., ...
55	UP	1807-509-31,...	1807-509-3..., ...
	SP	1807-501-31,...	1807-501-3..., ...
	P	1807-502-31,...	1807-502-3..., ...
	H	1807-503-31,...	1807-503-3..., ...
65	UP	1807-609-31,...	1807-609-3..., ...
	SP	1807-601-31,...	1807-601-3..., ...
	P	1807-602-31,...	1807-602-3..., ...
	H	1807-603-31,...	1807-603-3..., ...

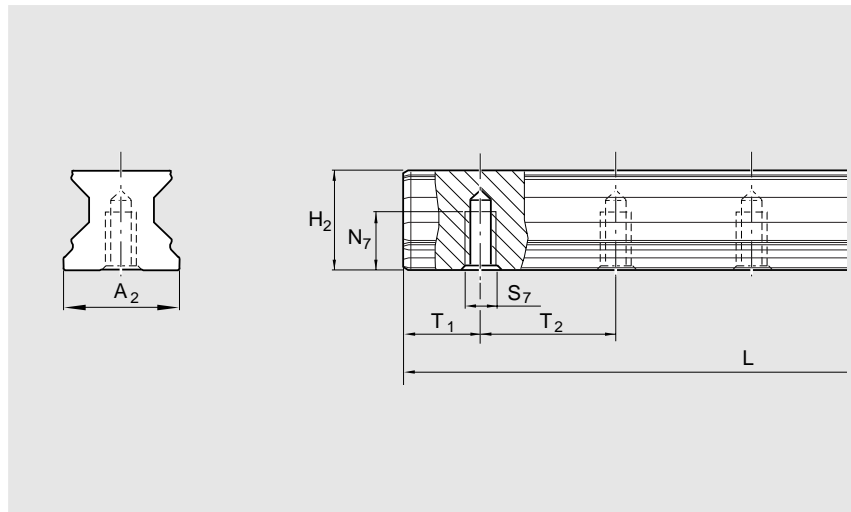
Dimensions and weights

Special version:

Zinc-iron coating, yellow chroma-ted, in accuracy class H.

Part numbers:

1848-.13-3. (end faces uncoated)
 1848-.13-4. (end faces coated)

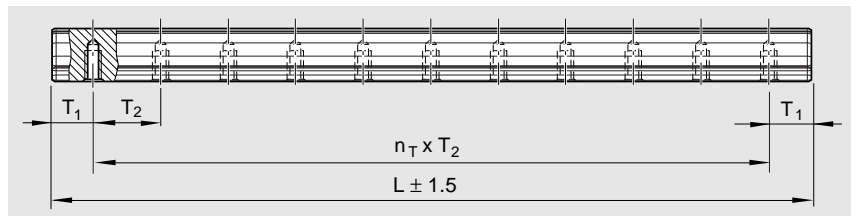


Size	Dimensions (mm)								Weight kg/m
	A ₂	H ₂	N ₇ ^{±0.5}	S ₇	T _{1S} ^{±0.5}	T _{1 min}	T ₂	L _{max}	
25	23	23.40	12	M6	13.00	10	30.0	4000	3.1
35	34	30.80	15	M8	18.00	12	40.0	4000	6.3
45	45	38.80	19	M12	24.25	16	52.5	4000	10.3
55	53	47.55	22	M14	28.00	18	60.0	4000	13.1
65	63	57.85	25	M16	35.50	20	75.0	4000	17.4

Ordering a guide rail

Ordering example 1:

Guide rail size 35, accuracy class H,
 rail length 1756 mm,
 (43 · T₂, number of holes n_B = 44)
 Ordering data: **1807-303-31, 1756 mm**



Intermediate lengths

Calculation of rail length L and ordering examples:

- The preferred dimension is T_{1S}
- If T_{1S} cannot be used, then
 - Select an end space T₁ between T_{1S} and T_{1 min}
 - Do not go below the minimum spacing T_{1 min}!

Note

- T₁, T_{1 min}, T_{1S} are the same at either end of the rail, unless otherwise specified.

Rail lengths above L_{max} are made up of fitted rail sections mounted end to end.

$L = n_B \cdot T_2 - 4$ or $L = n_{T_2} \cdot T_2 + 2 \cdot T_{1S}$	L = rail length (mm) T ₂ = hole spacing*) (mm) T _{1S} = preferred dimension*) (mm) n _B = number of holes n _{T₂} = number of spaces *) see table for values
---	--

Ordering example 2 (over L_{max}):

Guide rail size 35,
 Accuracy class H,
 Rail length 5036 mm, 2 sections

Ordering data:

Part number and number of sections,
 length

T₁ / n_{T₂} · T₂ / T₁ (mm)

1807-303-32, 5036 mm

18 / 125 · 40 / 18 mm